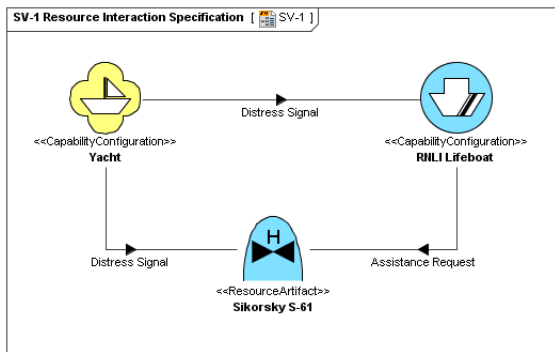




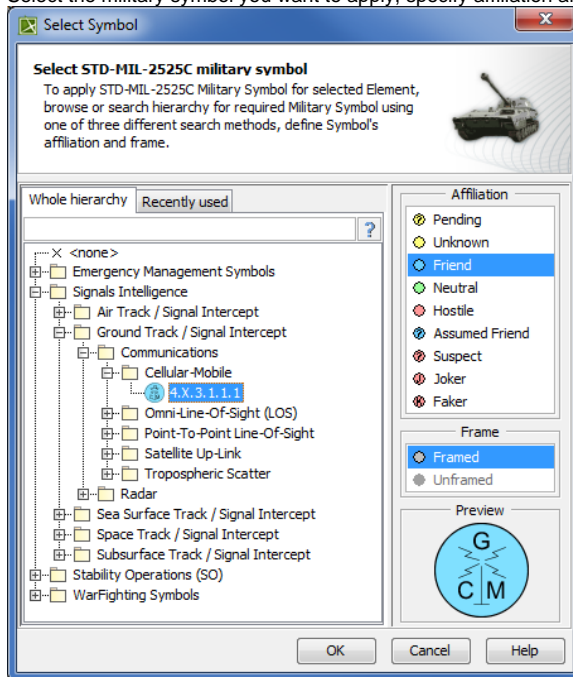
Applying military symbols

Military symbols can be applied to resources in the [SV-1](#), [SV-2](#) and [SV-4](#) diagrams.



To apply military symbol for resource shape

1. Open the **Select Symbol** dialog:
 - Create resources from MIL-STD-2525C Symbology toolbar.
 - Select resource and click  on the smart manipulator toolbar.
 - Open the Specification window of any UAF element, select **Image** property cell and click .
2. Select the military symbol you want to apply, specify affiliation and frame style.



3. Click **OK**.
The military symbol is applied for the resource shape.