

# Strategic Structure

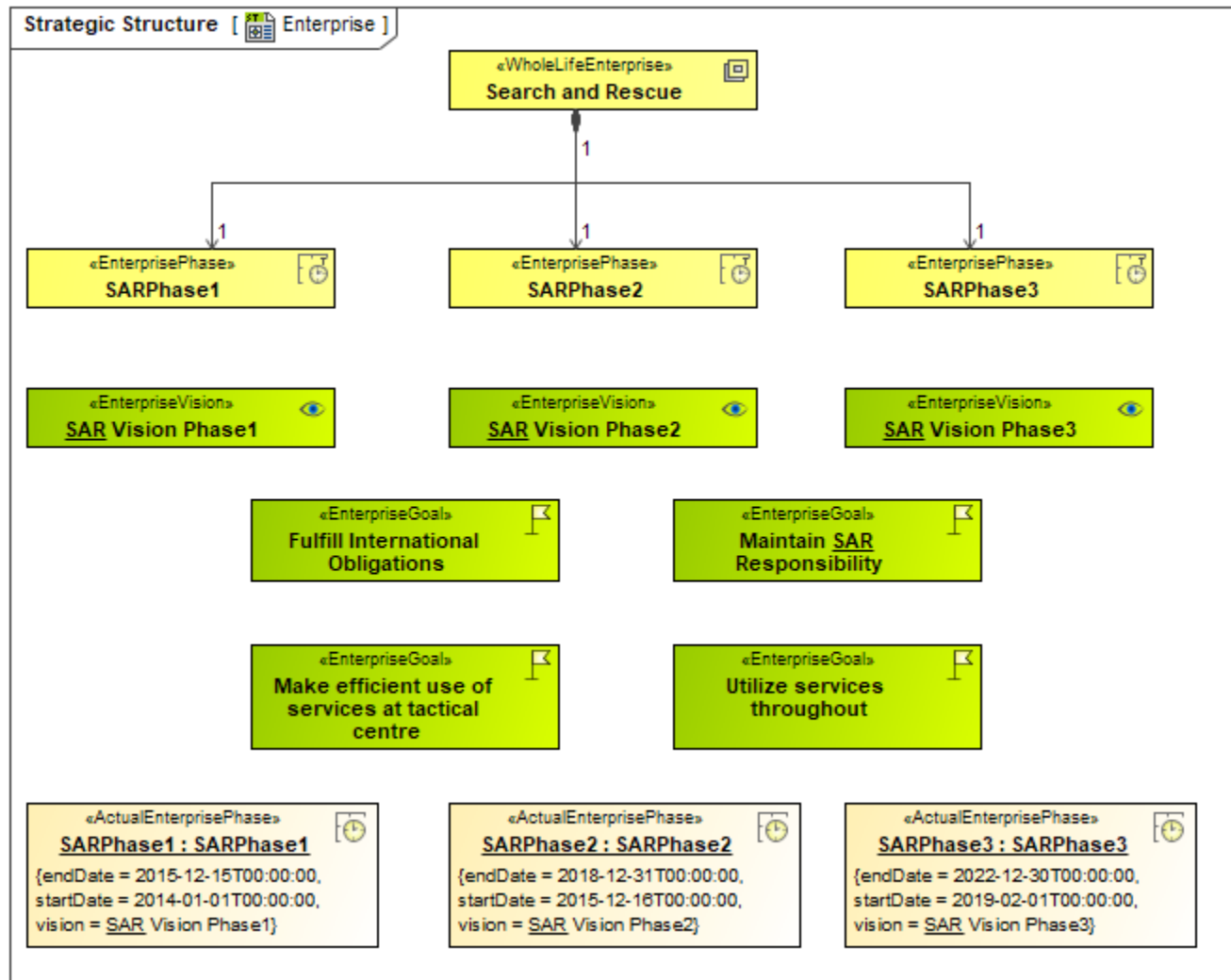
## Description

The Strategic Structure (St-Sr) shows the composition of capabilities and how capabilities are decomposed from higher level ones as needed. This view addresses the enterprise concerns associated with the overall vision for transformational endeavors and thus defines the strategic context for a group of capabilities. The purpose of a Strategic Structure (St-Sr) view is to provide a strategic context for the capabilities described in the Architectural Description.

## Implementation

The Strategic Structure (St-Sr) view is represented by a [Strategic Structure diagram](#).

## Sample



An example of the Strategic Structure diagram

## Related elements

- [Actual Enduring Task](#)
- [Actual Enterprise Phase](#)
- [Actual Organization](#)
- [Actual Responsible Resource](#)
- [Capability](#)
- [Capable Element](#)
- [Enduring Task](#)
- [Enterprise Goal](#)
- [Enterprise Phase](#)
- [Enterprise Vision](#)
- [Exhibits](#)
- [Organization In Enterprise](#)
- [Whole Life Enterprise](#)

#### Related procedures



Unknown macro: 'list-children'