

# Resources Interaction Scenarios

## Description

The Resources Interaction Scenarios (Rs-Is) domain expresses the time-ordered examination of the interactions between resources (roles). Each event-trace diagram should have an accompanying description that defines the particular scenario or situation.

The Resources Interaction Scenarios (Rs-Is) domain is valuable for moving to the next level of detail from the initial solution design, to help define a sequence of functions and system data interfaces, and to ensure that each participating resource or resource role has the necessary information it needs, at the right time, to perform its assigned functionality.

The intended usage of the The Resources Interaction Scenarios (Rs-Is) view includes:

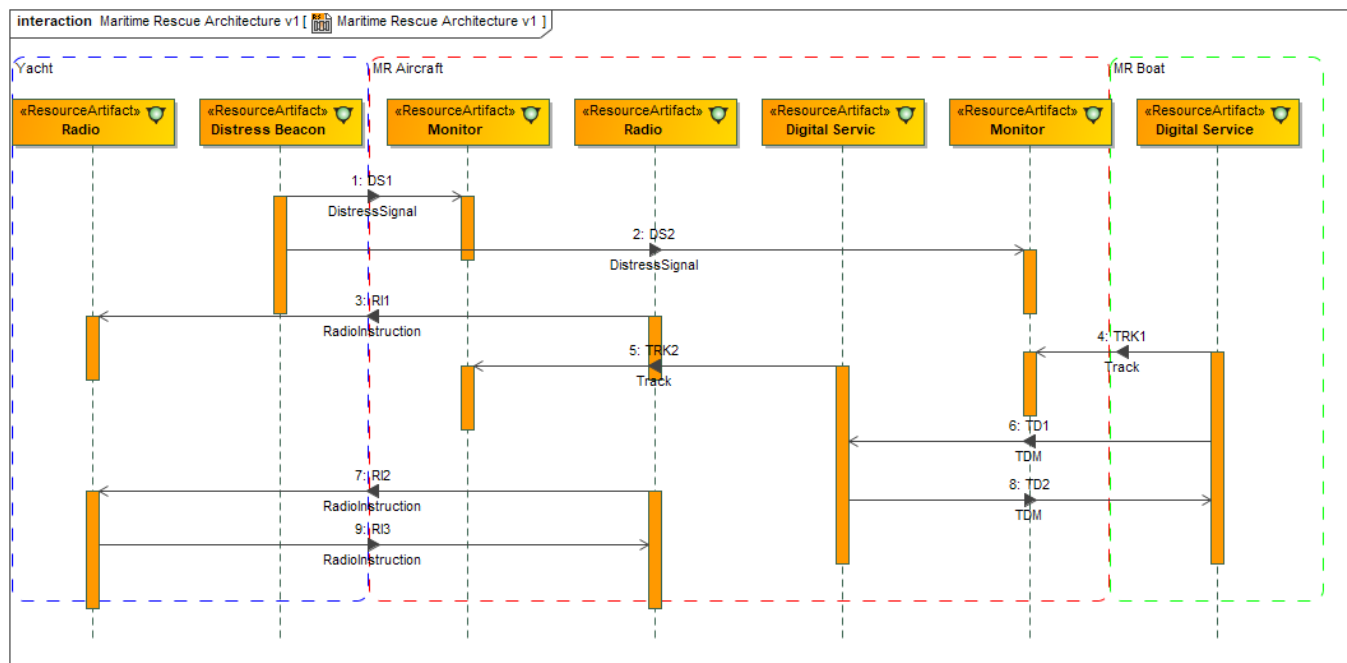
- Analysis of resource events impacting operation.
- Behavioral analysis.
- Identification of non-functional system requirements.

## Implementation

The Resources Interaction Scenarios (Rs-Is) view is represented by:

- [Resources Interaction Scenarios diagram](#) that is based on interaction.
- Resources Interaction Scenarios (BPD) diagram. It is based on BPMN Process Diagram (BPD). It describes a sequence or flow of activities in an organization that shows how the business work. The diagram shows activities, events, and data that trigger or feed business activities.

## Sample



## Related elements

- [Activity](#)
- [Function](#)
- [Resource Exchange](#)
- [Resource Exchange Item](#)
- [Resource Message](#)
- [Resource Method](#)
- [Resource Performer](#)
- [Resource Role](#)

## Related procedures

Unknown macro: 'list-children'