

# Personnel Interaction Scenarios

## Description

The Personnel Interaction Scenarios (Pr-Is) domain expresses the time-ordered examination of the interactions between operational resources (roles). Each event-trace diagram should have an accompanying description that defines the particular scenario or situation.

The Personnel Interaction Scenarios (Pr-Is) domain is valuable for moving to the next level of detail from the initial solution design, to help define a sequence of functions and system data interfaces, and to ensure that each participating operational resource or resource role has the necessary information it needs, at the right time, to perform its assigned functionality.

The intended usage of the The Personnel Interaction Scenarios (Pr-Is) view includes:

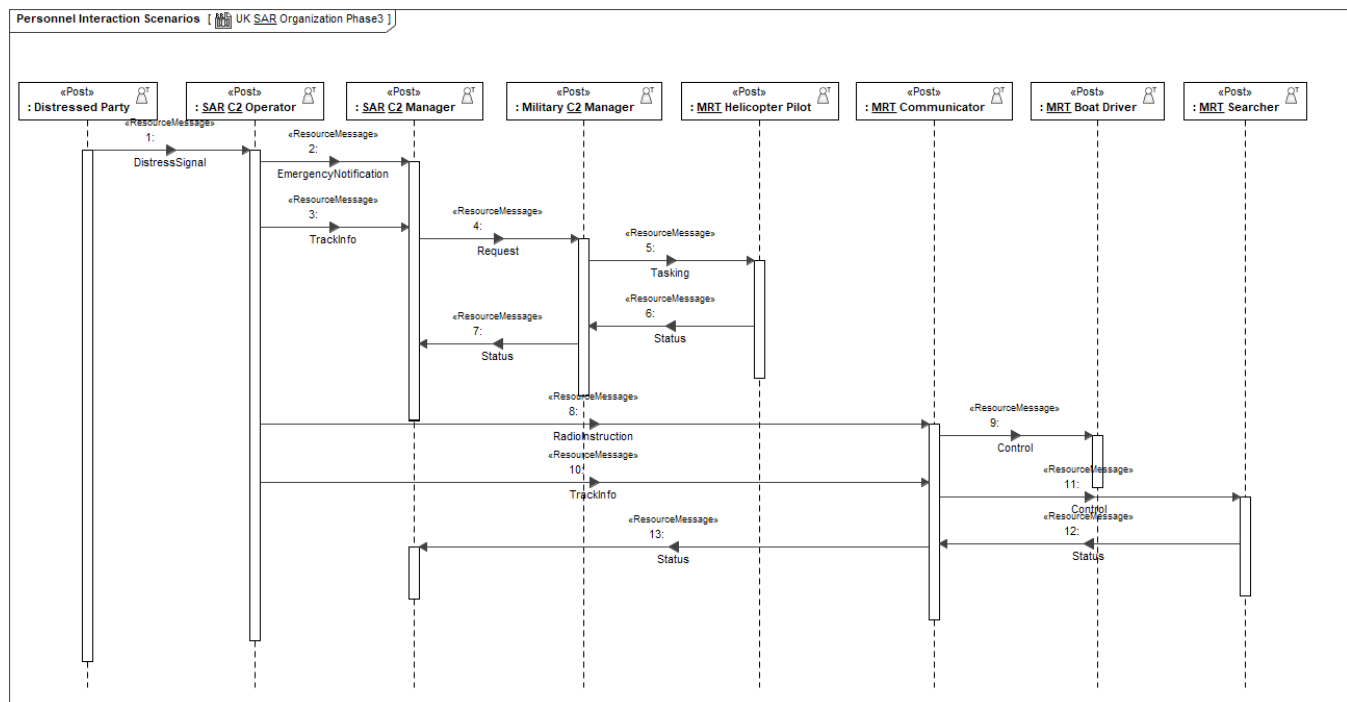
- Analysis of operational resource events impacting operation.
- Behavioral analysis.
- Identification of non-functional system requirements.

## Implementation

The Personnel Interaction Scenarios (Pr-Is) view is represented by:

- [Personnel Interaction Scenarios diagram](#) that is based on interaction.
- Personnel Interaction Scenarios (BPD) diagram. It is based on BPMN Process Diagram (BPD). It describes a sequence or flow of activities in an organization that shows how the business work. The diagram shows activities, events, and data that trigger or feed business activities.

## Sample



An example of the Personnel Interaction Scenario diagram

## Related elements

- [Activity](#)
- [Function](#)
- [Organization](#)
- [Organizational Resource](#)
- [Person](#)
- [Physical Resource](#)
- [Post](#)
- [Resource Exchange](#)
- [Resource Exchange Item](#)
- [Resource Message](#)
- [Resource Method](#)
- [Resource Performer](#)
- [Resource Role](#)

## Related procedures



Unknown macro: 'list-children'