

Description

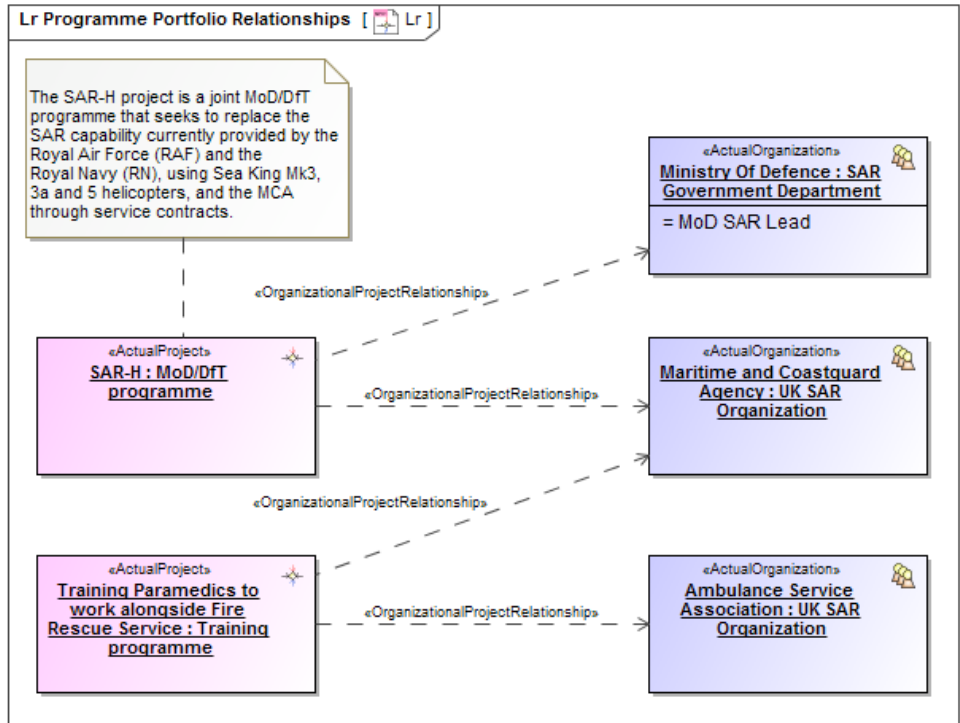
Use of the Lr view should support the management of capability delivery and be aligned with [Cr Capability Roadmap view](#).

- Project management and control (including delivery timescales).
- Project dependencies and the identification of associated risk.
- Portfolio management.
- Through Life Management Planning (TLMP).

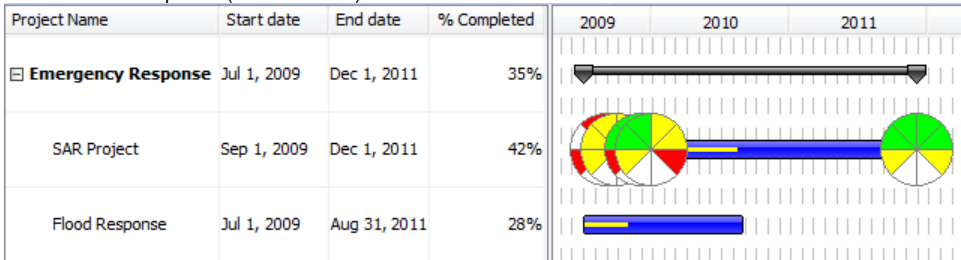
The L3 view can be represented using:

- | Criteria | |
|------------------------------|--|
| Select Row Scope: | NATO Capability Viewpoint |
| | Emergency Response Enhancement Flood Response SAR-H : Mod/DFT programme SAR Project : DLOD Project Training Paramedics to work alongside Fire Rescue Service : ... |
| C Assistance | |
| C Distress Signal Monitoring | |
| C Inform | |
| C Land SAR | |
| C Maritime SAR | |
| C Military C2 | |
| C Recovery | |
| C SAR | |
| C SAR C2 | |
| C Search | |
| C UK SAR Capability | |

- Lr Programme Portfolio Relationships diagram.



- Lr Lines of Development (Lr Gantt chart).



- Lr Responsibility Matrix.

Criteria

Select Row Scope: NPV-1,NPV-2 ... Select Column Scope: D2 ...

| | Ambulance Service Association : UK SAR Organization | Department Of Transport : SAR Government Department | DoT SAR Lead : UK SAR SC Member | Lifeboat Driver : MRT Driver | Maritime and Coastguard Agency : UK SAR Organization | Ministry Of Defence : SAR Government Department | MoD SAR Lead : UK SAR SC Member | Radio Operator : MRT Communicator | Rescue Swimmer : MRT Swimmer | RNLI : UK SAR Organization |
|--|---|---|---------------------------------|------------------------------|--|---|---------------------------------|-----------------------------------|------------------------------|----------------------------|
| Emergency Response Enhancement [NATO Programme Viewpoint::NPV-1] | | | | | | | | | | |
| Flood Response [NATO Programme Viewpoint::NPV-1] | | | | | | | | | | |
| SAR-H : MoD/DfT programme [NATO Programme Viewpoint::NPV-1] | | | | | | | | | | |
| SAR Project : DLOD Project [NATO Programme Viewpoint::NPV-1] | | | | | | | | | | |
| Training Paramedics to work alongside Fire Rescue Service : Training programme [NATO Programme Viewpoint::NPV-1] | | | | | | | | | | |

Related elements

- [Capability](#)
- [Project](#)
- [Maps To Capability](#)
- [Dependency](#)
- [Actual Organization](#)

- [Actual Post](#)
- [Actual Project](#)
- [Actual Project Milestone](#)
- [Actual Project Milestone Role](#)
- [Milestone Dependency](#)
- [Responsible For](#)
- [Project Milestone](#)
- [Project Milestone Role](#)
- [Project Sequence](#)
- [Project Status](#)
- [Project Theme](#)
- [Status Indicators](#)

Related procedures



Unknown macro: 'list-children'