

# Automatic Instantiation wizard

The **Automatic Instantiation** wizard is used to automatically instantiate any typical structure of UAF architecture.

To open the **Automatic Instantiation** wizard

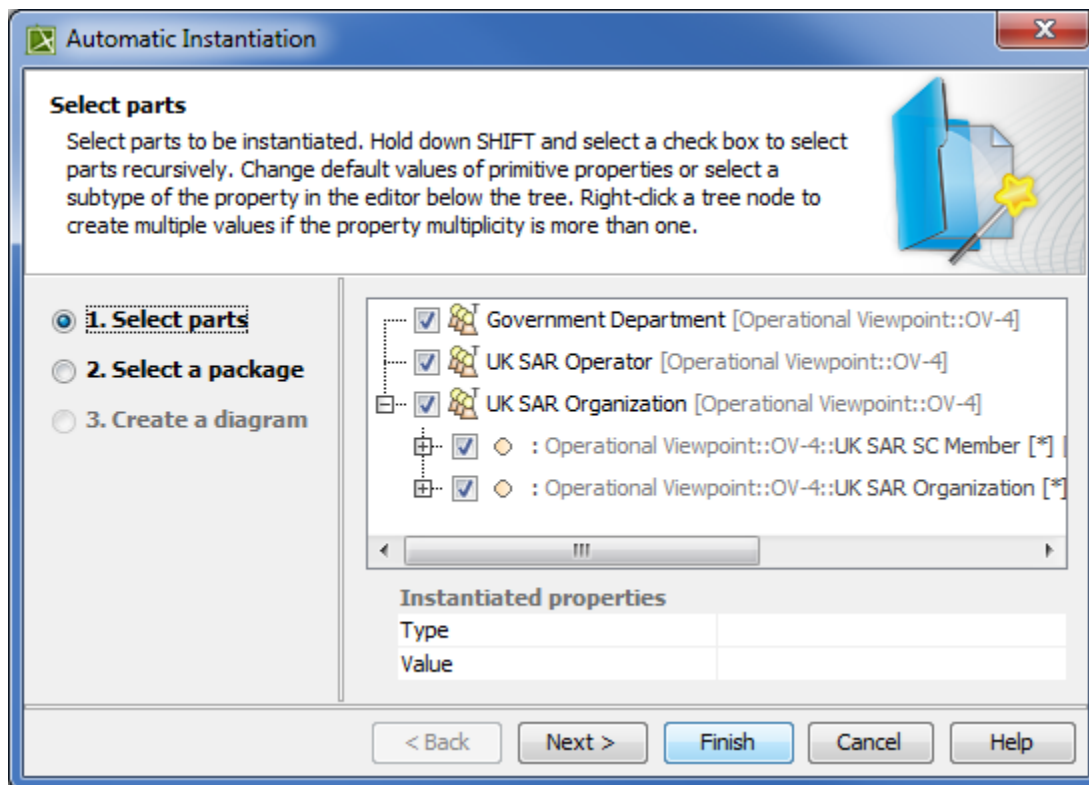
1. Select any number of instantiable UAF elements.
2. Right-click them and choose **Tools > Create Instance**.  
The **Automatic Instantiation** wizard opens.

The wizard consists of these three steps:

- 1 [Selecting parts](#)
- 2 [Selecting a package](#)
- 3 [Creating a diagram](#)

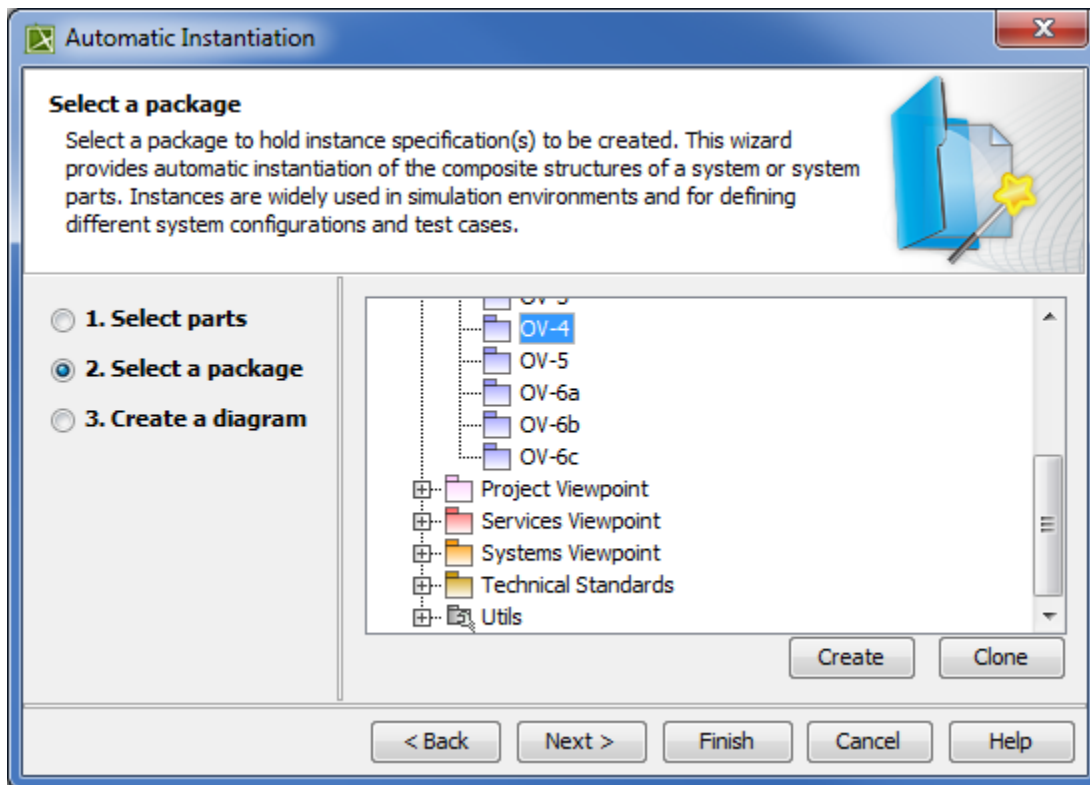
## Selecting parts

Select elements and their internal parts to instantiate.



## Selecting a package

Select, create or clone the package to store the created actual structure.



## Creating a diagram

Specify diagram name, select diagram type to visualize the actual structure and the package to store the diagram.

**Automatic Instantiation**

**Create a diagram**

Check the "Create a new diagram" checkbox if you want to create a new diagram for displaying instance specification(s). Check the "Create link between instances" checkbox if you would like to display "Link(s)" among those instance specification(s).

☒ 1. Select parts  
☐ 2. Select a package  
☒ 3. Create a diagram

☒ Create a new diagram  
☐ Create link between instances

Type diagram name:  
NM\_110804

Select diagram type:  
OV-2 Operational Resource Flow Description

Select owner for diagram:

- OV-2
- OV-3
- OV-4
- OV-5
- OV-6a
- OV-6b
- OV-6c

Create Owner Clone

< Back Next > Finish Cancel Help

#### Related procedures

- [Instantiating structures](#)