

Resource Assignment Wizard

The **Resource Assignment Wizard** is used to define resource for the Version Of Configuration in specified time frame.

To open the **Resource Assignment Wizard**

1. Open a [SV-8](#) (DoDAF), SV-8 (MODAF), NSV-8 (NAF), [Pr](#) (NAF 4.0), or [Resource Evolution](#) (UAF)
2. On the diagram pane, right-click the Version Of Configuration and select **Resource**.
The **Resource Assignment Wizard** opens.

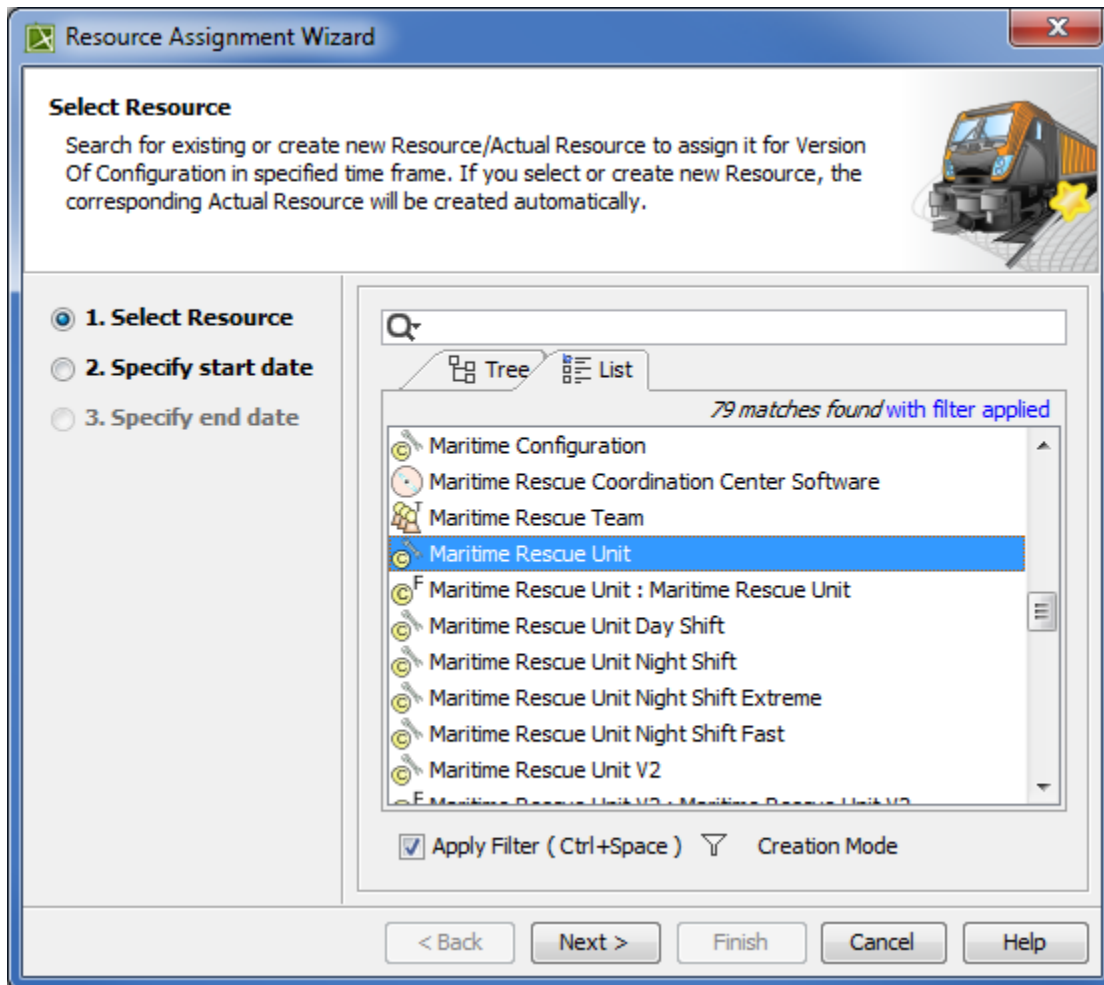
The wizard consists of three steps:

- 1 [Resource selection](#)
- 2 [Start date specification](#)
- 3 [End date specification](#)

Resource selection

In this step, you can select the existing or create new resource/Actual Resource that will be assigned for Version Of Configuration.

 If you select or create new resource, the corresponding Actual Resource will be created automatically.



To create a resource for the Version Of Configuration


1. In the **Select Resource** dialog switch on the **Creation Mode**.
2. Select package where you want to create a resource.

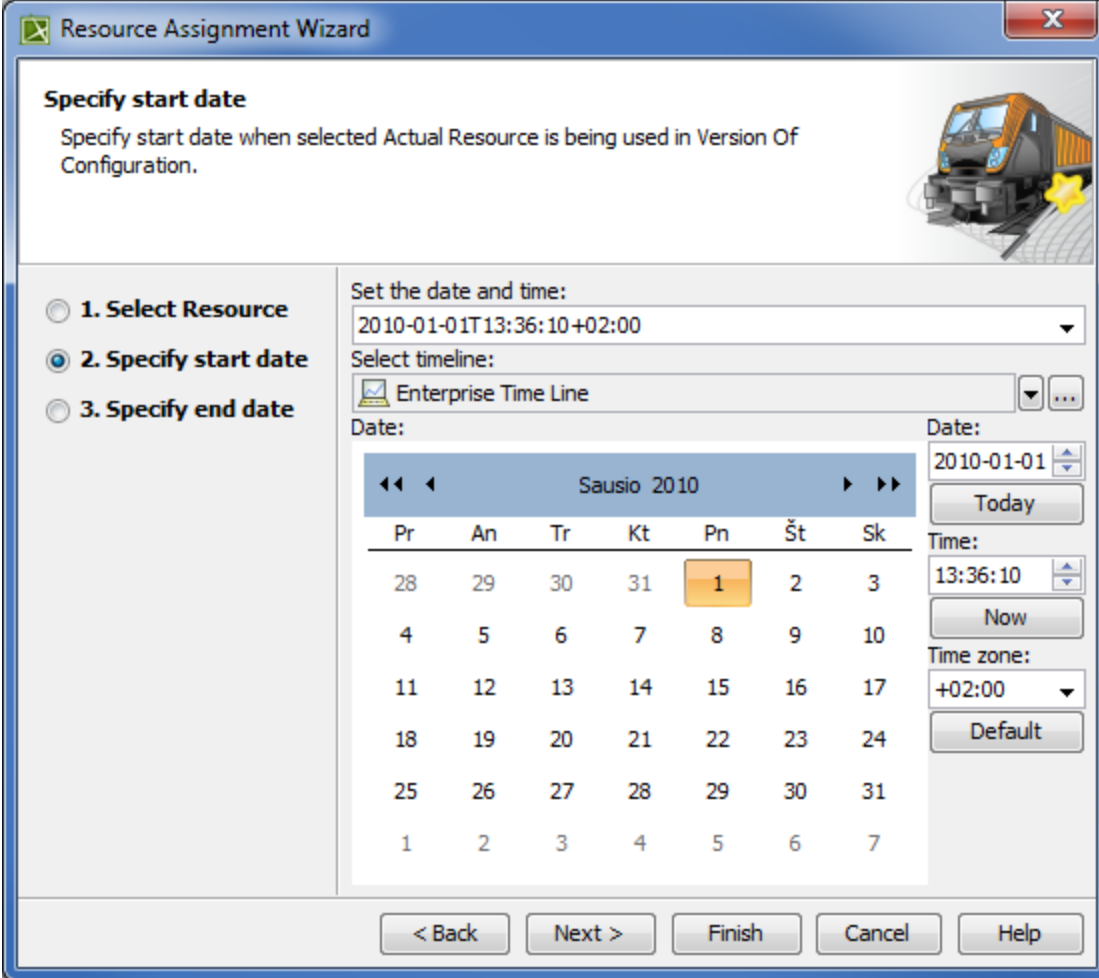
3. Click the **Create** button, choose a resource category **Security**, **Resources**, or **Business**, and select the desired resource.
4. In the Specification window of the newly created resource, type its name.

Start date specification

In this step, you can set the start date (or select the date from the Timeline) when selected Actual Resource is being used in Version Of Configuration.

The Actual Project Milestone with Kind InService is created. Resource is assigned to the Actual Project Milestone.

 For more information on setting the day and time, see [Date and Time Settings](#) dialog.




Resource Assignment Wizard

Specify start date
Specify start date when selected Actual Resource is being used in Version Of Configuration.

☐ 1. Select Resource
☒ 2. Specify start date
☐ 3. Specify end date

Set the date and time:
2010-01-01T13:36:10+02:00

Select timeline:
 Enterprise Time Line

Date:
Date: 2010-01-01
Time: 13:36:10
Time zone: +02:00

Calendar view for Sausio 2010:


Pr	An	Tr	Kt	Pn	Št	Sk
28	29	30	31	1	2	3
4	5	6	7	8	9	10
11	12	13	14	15	16	17
18	19	20	21	22	23	24
25	26	27	28	29	30	31
1	2	3	4	5	6	7


< Back Next > Finish Cancel Help

End date specification

In this step, you can set the end date (or select the date from the Timeline) when selected Actual Resource is being used in Version Of Configuration.


The Actual Project Milestone with Kind OutOfService is created. Resource is assigned to the Actual Project Milestone.

 For more information on setting the day and time, see [Date and Time Settings](#) dialog.


Resource Assignment Wizard
✕

Specify end date

Specify end date when selected Actual Resource is being used in Version Of Configuration.




☐ 1. Select Resource
 ☐ 2. Specify start date
 ☒ 3. Specify end date

Set the date and time:

2012-11-04T13:36:10+02:00

Select timeline:

 Enterprise Time Line

Date:

◀◀

◀

Lapkričio 2012

▶

▶▶

Pr	An	Tr	Kt	Pn	Št	Sk
29	30	31	1	2	3	4
5	6	7	8	9	10	11
12	13	14	15	16	17	18
19	20	21	22	23	24	25
26	27	28	29	30	1	2
3	4	5	6	7	8	9

Date:

2012-11-04

Today

Time:

13:36:10

Now

Time zone:

+02:00

Default

< Back

Next >

Finish

Cancel

Help