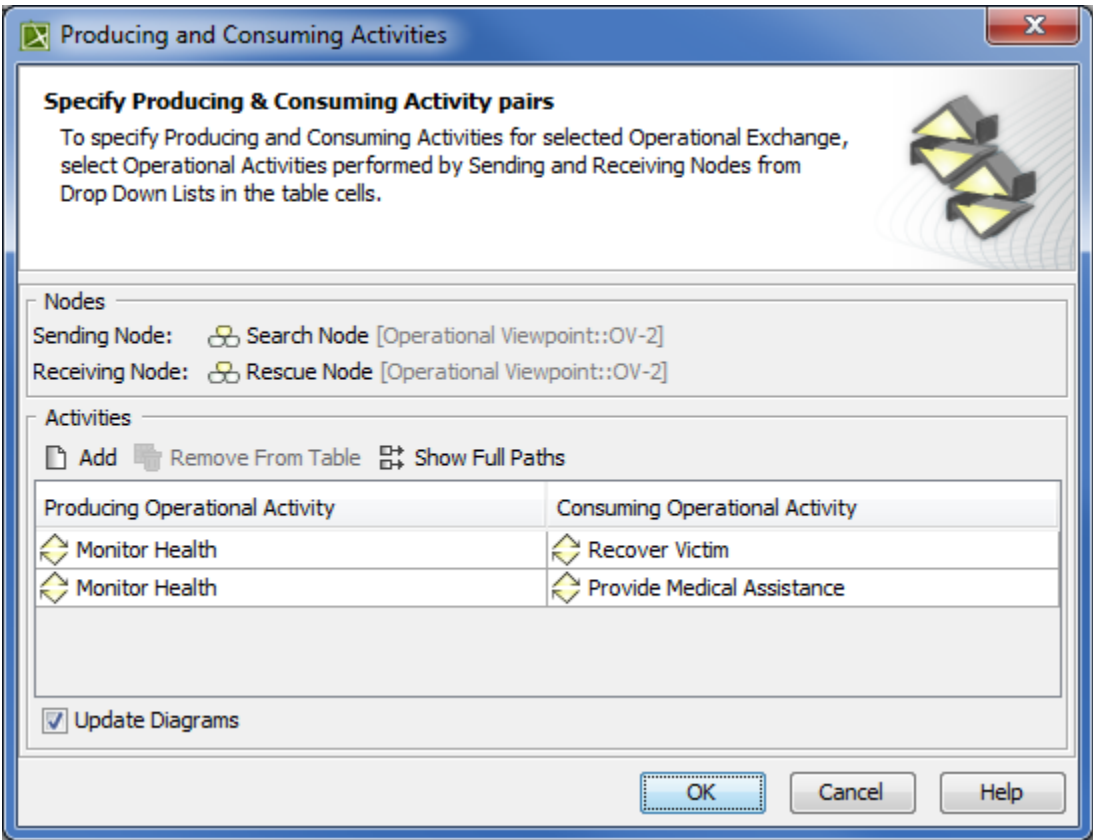
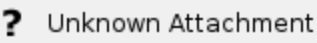
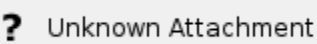


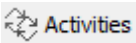
# Producing and Consuming Activities dialog


The **Producing and Consuming Activities** dialog allows you to specify or modify producing and consuming Activities for a selected Operational Exchange.



To open the **Producing and Consuming Activities** dialog

- In the Specification window of the Operational Exchange, select **Producing Activity/ Consuming Activity** property value cell and click  

- In the OV-3 Operational Resource Flow Matrix, select **Producing Operational Activity/ ConsumingOperational Activity** cell and click  

- In the **Operational Exchange Manager** dialog, select **Producing Operational Activity/ Consuming Operational Activity** cell:

- Click 
- Click 

 The **Producing and Consuming Activities** dialog is embedded in the **Realized Operational Exchange** wizard as a step #2.

The box and buttons of the dialog are described in the following tables.

Box	Description
Update Diagrams	Select to update all related diagrams. Existing diagrams will be updated by displaying a particular operational exchange as a triangle on every Operational Activity Edge connecting producing and consuming activity actions. If the specified Producing and Consuming Activities does not exist in any diagram, you will be suggested to create a new OV-5 Operational Activity Flow Model (DoDAF), OV-5 Operational Activity Flow Model (MODAF), or NOV-5 Operational Activity Flow Model (NAF) diagram. Producing and Consuming Activity actions and the Operational Exchange will be represented in this new diagram.

Button	Description
Add	Click to add a new row for assigning a pair of Producing and Consuming Activities.
Remove From Table	Click to delete a selected Producing and Consuming Activities pair.
Show Full Paths	Click to show views containing specified activities (see the following figure). Click once again to hide this information.

To create a pair of producing and consuming activities

1. Click the Add button. The empty row is displayed in the table.
2. In the **Producing Operational Activity** column of a selected row, create a new value:
  - Click the drop-down arrow to open a list of available activities and select one.

If you do not see the list of available activities, click and select the **Performed Activities** button.

- Click **Unknown Attachment** button to create a new or select an existing activity from the model. The **Select Operational Activity** dialog opens, wherein you are able to select or create activities.
3. Perform the same action described above for the **Consuming Operational Activity** column of the same row.

#### Related procedures

- [Filtering Operational Activities and Functions](#)
- [Realized Operational Exchange wizard](#)
- [Operational Exchange Manager dialog](#)