

Capability Provision Creation Wizard

The **Capability Provision Creation Wizard** is used to define a Capability Provision by one or more Actual Resources at a specific period of time.

To open the **Capability Provision Creation Wizard**


1. Open a [CV-3](#) (DoDAF), StV-3 (MODAF), NCV-3 (NAF), or [Cr](#) (NAF 4.0)
 2. Select a Capability.
 3. Do one of the following:
 - On the <viewpoint name> diagram toolbar, click **Add New > Capability Provision**.
 - On the diagram pane, right-click the Capability and select **Add New Capability Provision**.
- The **Capability Provision Creation Wizard** opens.

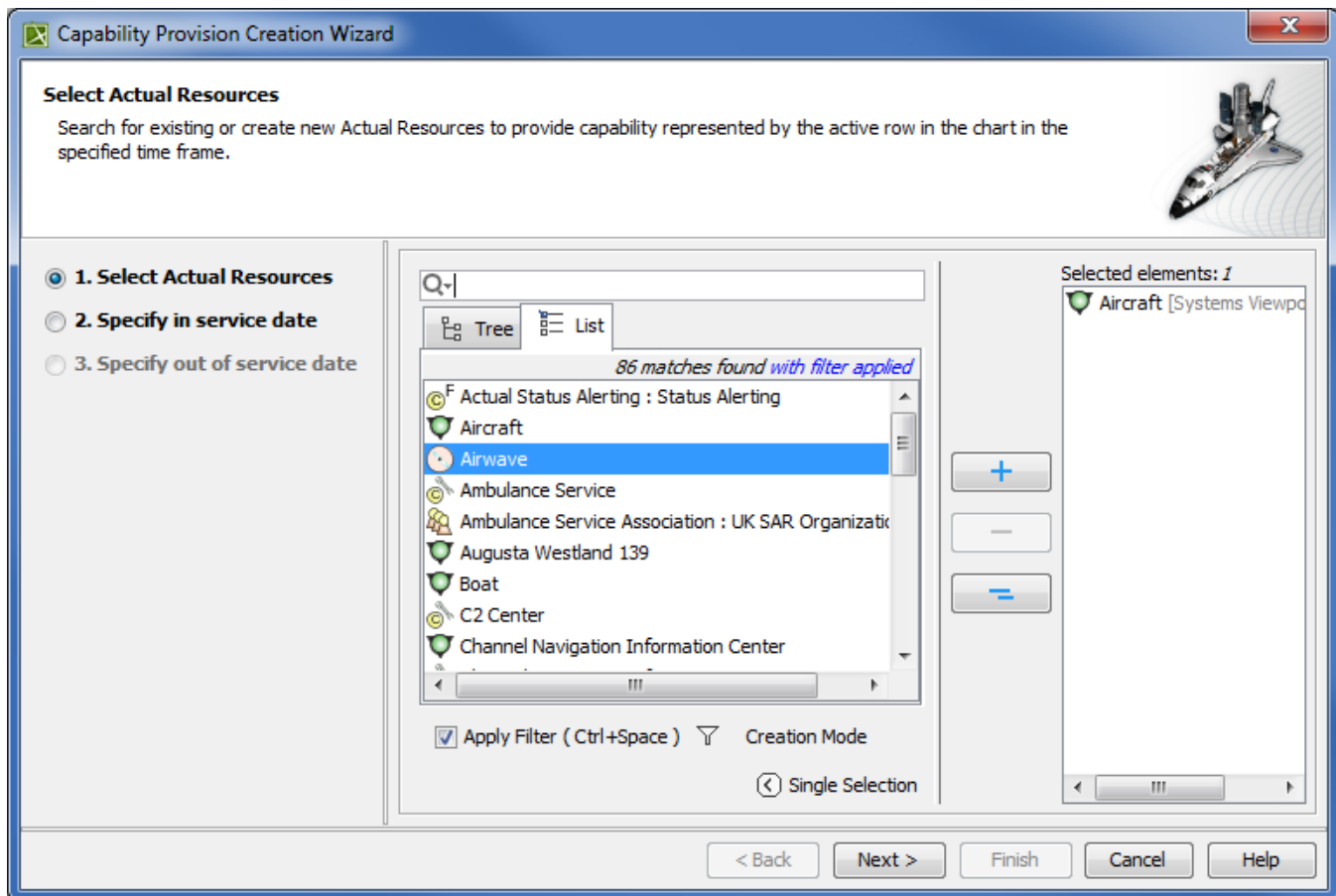
The wizard consists of three steps:

- 1 [Actual Resources selection](#)
- 2 [Capability service date specification](#)
- 3 [Out of service date specification \(Optional\)](#)

Actual Resources selection


In this step, you can select the existing or create new Actual Resources.

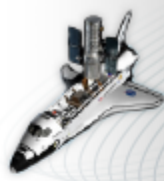
 For more information on selecting elements, see [Diagram Creation Wizard](#), Step #2.



Capability service date specification

In this step, you can set the date and time, when the Actual Resource should begin provisioning the Capability. The In Service Milestone is created.

 For more information on setting the day and time, see [Date and Time Settings](#) dialog.



Specify in service date

Specify date for selected Actual Resource configurations to start providing Capability represented by the active row.

- 1. Select Actual Resources
- 2. Specify in service date**
- 3. Specify out of service date

Set the date and time:

2015-08-14T15:37:57+02:00

Select timeline:

Enterprise Time Line

Date:

August 2015						
Mon	Tue	Wed	Thu	Fri	Sat	Sun
27	28	29	30	31	1	2
3	4	5	6	7	8	9
10	11	12	13	14	15	16
17	18	19	20	21	22	23
24	25	26	27	28	29	30
31	1	2	3	4	5	6

Date:

2015-08-14

Today

Time:

15:37:57

Now

Time zone:

+02:00

Default

< Back

Next >


Finish

Cancel

Help

Out of service date specification (Optional)

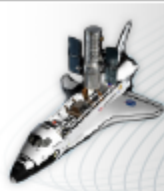
In this step, you can specify when the Actual Resource should stop provisioning the Capability. The Out Of Service Milestone is created. This step is optional. If you skip this step, the Capability exhibition bar on the chart will have the triangle ending.

 For more information on setting date and time, see [Date and Time Settings](#) dialog.

Capability Provision Creation Wizard

Specify out of service date

Specify date for selected Actual Resource configurations providing Capability represented by the active row to go out of service.



1. Select Actual Resources

2. Specify in service date

3. Specify out of service date

Set the date and time:

2015-08-14T15:37:57+02:00

Select timeline:

Enterprise Time Line

Date:

2015-08-14

Today

15:37:57

Now

+02:00

Default

August 2015

Mon	Tue	Wed	Thu	Fri	Sat	Sun
27	28	29	30	31	1	2
3	4	5	6	7	8	9
10	11	12	13	14	15	16
17	18	19	20	21	22	23
24	25	26	27	28	29	30
31	1	2	3	4	5	6

< Back

Next >

Finish

Cancel

Help