

# MODAF. OV-4 Organizational Relationships Chart

## Description

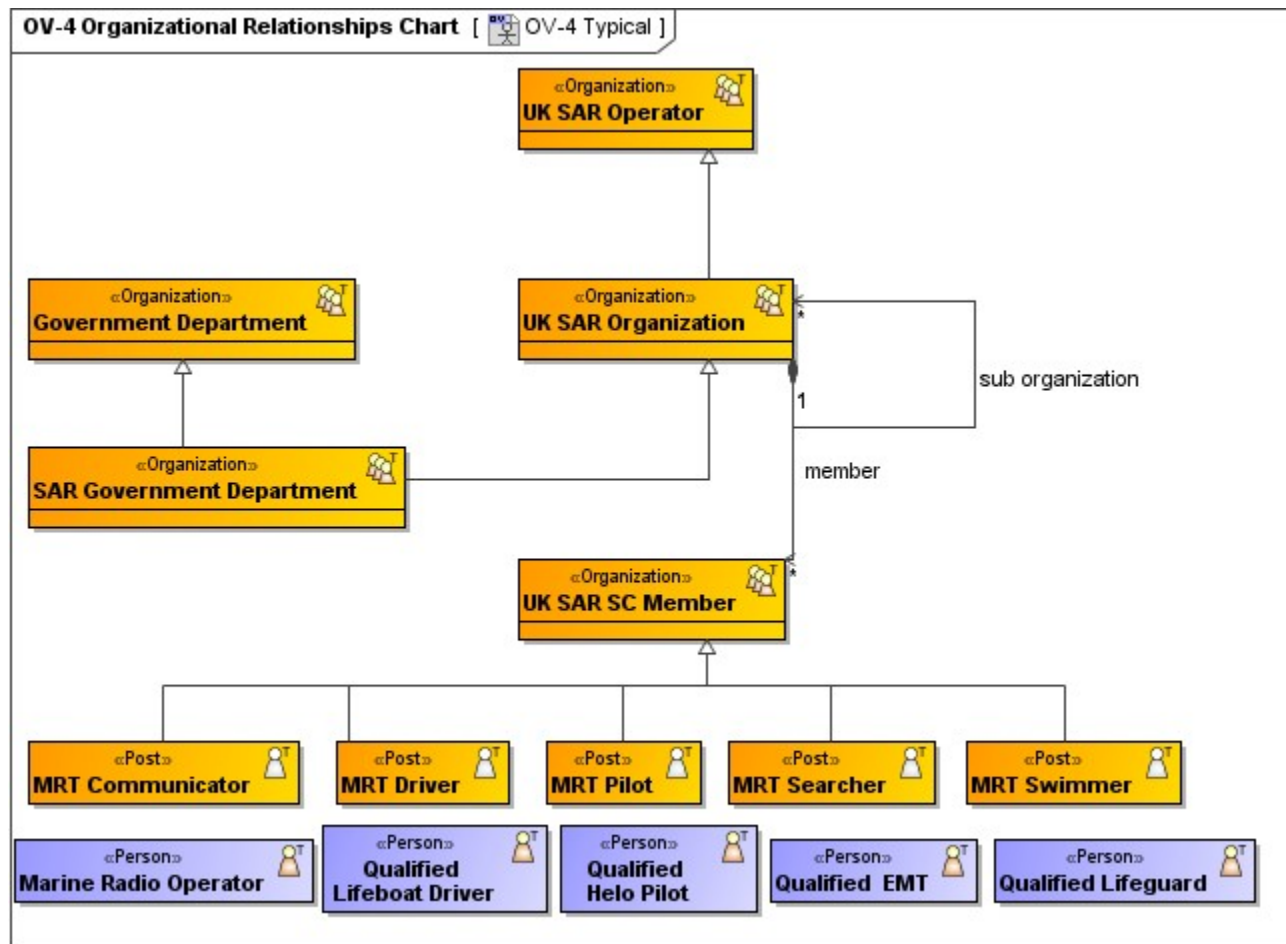
The Organizational Relationships Chart illustrates the command structure or relationships (as opposed to relationships with respect to a business process flow) among human roles, organizations, or organization types that are the key players in architecture. MODAF divides The OV-4 in two views: an OV-4 Typical and an OV-4 Actual. The former is exactly as the DoDAF OV-4, while the latter is a special form of the SV-1; where the resources are restricted to being organizational.

## Implementation

OV-4 can be represented using:

- OV-4 diagram which is based on the UML Class diagram.
- UML Class diagram.
- SysML Block Definition diagram.

## Sample



OV-4 Organizational Relationships Chart

## Related views

The organizations that are modeled using an OV-4 in the Operational Viewpoint may also appear in other views, for example, SV-1 (organizational constituents of a capability configuration), AcV-1 (actual organizations that own projects), and SV-5 (organizational resources performs functions).

## Related elements

- Organization
- Post
- Person
- Command
- Competence
- Provides Competence
- Requires Competence
- Actual Organization

- [Actual Post](#)
- [Actual Person](#)
- [Fills Post](#)
- [Actual Resource Relationship](#)
- [Actual Organization Role](#)
- [Operational Activity](#)
- [Owns Process](#)

#### **Related procedures**

- [Working with OV-4 diagram](#)
- [Instantiating structures](#)