

COR2022

Abbreviation

COR2022

Message

The client and supplier are not the same specialization of "Subject Of Forecast" (e.g. Software to Software, Resource Artifact to Resource Artifact, Capability Configuration to Capability Configuration) and etc.

Description

The client and supplier are not stereotyped by the same specialization of "Subject Of Forecast" (e.g. Software to Software, Resource Artifact to Resource Artifact, Capability Configuration to Capability Configuration, System to System, Systems Node to Systems Node, Post to Post, Organization to Organization, Standard to Standard, Capability to Capability, Competence to Competence).

Severity

Error

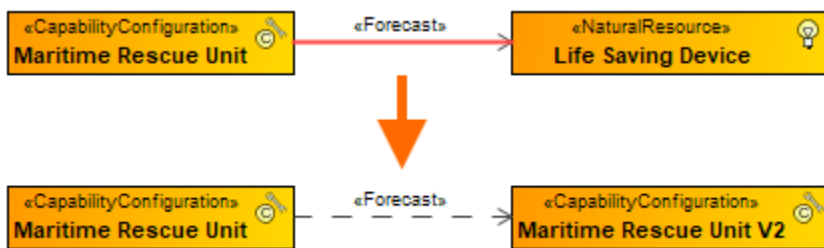
Context element

Dependency

Solvers

- **Change To Forecast Element** - opens the dialog to select the correct forecast element.
- **Change From Technology Element** - opens the dialog to select the correct technology element.
- **Remove Forecast** - removes the Forecast relationship.

Example



Natural Resource element is changed to Capability Configuration element using Change To Forecast Element solver