

COM2041

Abbreviation

COM2041

Message

Actual Enterprise Phase is not Exhibiting Capability.

Description

Actual Enterprise Phase should exhibit the Capability using the Exhibits relationship.

Severity

Info

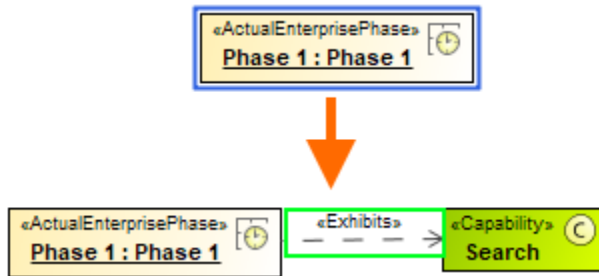
Context element

Actual Enterprise Phase

Solvers

- **Select Capabilities** - the Capability is selected.
- **Create Capability** - the Capability is created.

Example



Actual Enterprise Phase exhibiting Capability