

NPV-1 Programme Portfolio Relationships

Description

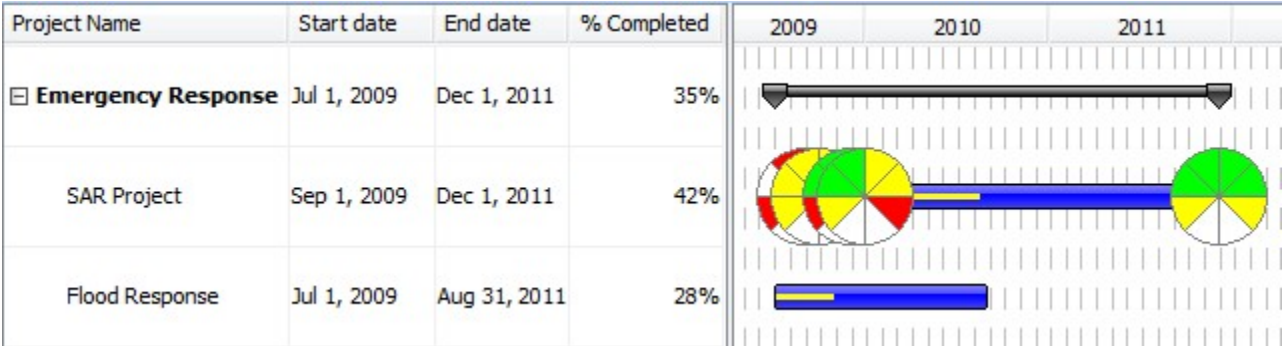
NPV-1 view products represent an organizational perspective on programmes.

Implementation

NPV-1 can be represented using:

- NPV-1 Programme Portfolio relationship diagram which is based on the UML Class diagram.
- NPV-1 Responsibility Matrix which is an editable Dependency Matrix.
- NPV-1 realized as a Gantt Chart.

Sample



NPV-1 Programme Portfolio Relationships

	Ambulance Service Association	Department Of Transport	DoT SAR Lead	Lifeboat Driver	Maritime and Coastguard Agency	Ministry Of Defence	MoD SAR Lead	Radio Operator	Rescue Swimmer	RNLI
SAR-H										
Training Paramedics to work alongside Fire Rescue Service										
Emergency Response Enhancement										
Flood Response										
SAR Project										

NPV-1 Programme to Capability Mapping

Related views

In essence, the NPV-1 is an organizational breakdown consisting of actual organizations (see NOV-4). The view is strongly linked with the NCV-4 which shows capability clusters and dependencies.

Related elements

- [Actual Organization](#)
- [Actual Post](#)
- [Actual Project](#)
- [Actual Project Milestone](#)
- [Actual Project Milestone Role](#)
- [Milestone Dependency](#)
- [Responsible For](#)
- [Project Milestone](#)

- [Project Milestone Role](#)
- [Project Sequence](#)
- [Project Status](#)
- [Project Theme](#)
- [Project](#)
- [Status Indicators](#)

Related procedures



Unknown macro: 'list-children'

Related references

- [Project Status Application Wizard](#)