

# Updating symbol styles in older projects

AVAILABLE FROM 19.0

## When does this apply?

- When you open an existing project with outdated symbol styles, the dialog described below will show.

## Which versions work?

- Updating symbol styles in older projects works with version **18.0 SP3 and later**, but it is not compatible in version 18.0 SP2 or earlier.

## Versioning

- Versioning is now available for updating a project's symbol styles programmatically.

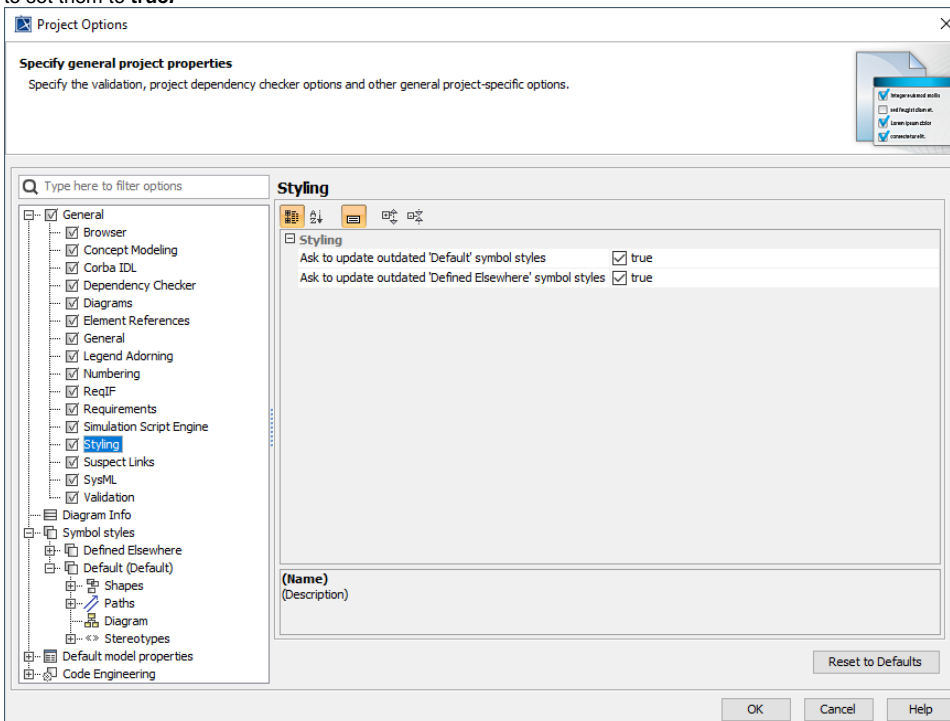
Updating symbol styles will overwrite the existing styles. If you have manually made changes or added new features to the existing styles, Concept Modeling Diagrams are intended to be as non-technical as possible for subject matter experts. However, symbol styles may sometimes expose technical details that are not appropriate for that kind of audience. The modeling tool, therefore, offers to tweak the symbol styles called **Default** and **Defined Elsewhere**.

You can update the symbol styles, defer updating the styles, or make Concept Modeler ask you or stop asking you about updating them by setting the **Ask to update outdated symbol styles** options to **true** or **false**. Expand the instructions below to see how to update the styling.

The **Ask to update outdated symbol styles** options, which open the **Update 'Default' symbol style** dialog or **Update 'Defined Elsewhere' symbol style** dialog asking you to update symbol styles when loading a Concept Modeling project with an older set of symbol styles, are set to **true** by default. If you set them to **false**, those dialogs will not open.

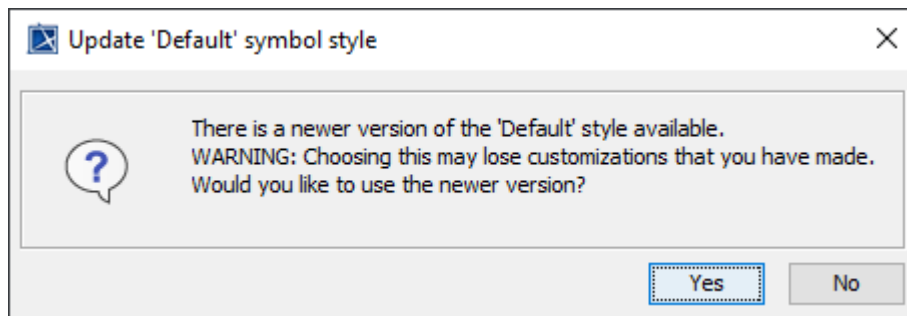
To enable/disable the **Ask to update outdated symbol styles** options

- On the main menu, click **Options > Project**.
- In the **Project Options** dialog, on the left pane, click **General** then **Styling**.
- Select the **Ask to update outdated 'Default' symbol styles** option and the **Ask to update outdated 'Defined Elsewhere' symbol styles** option to set them to **true**.



- Click **OK**.

In the **Update 'Default' symbol style** dialog and **Update 'Defined Elsewhere' symbol style** dialog, if you select **Yes**, the modeling tool will update the symbol styles. If you select **No**, you will defer updating the styles, and the dialogs will continue to appear next time when loading a Concept Modeling project with outdated symbol styles.



The message dialog when loading a Concept Modeling project with outdated symbol styles.

#### Related pages

- [Generating a natural language glossary](#)
- [Usage](#)