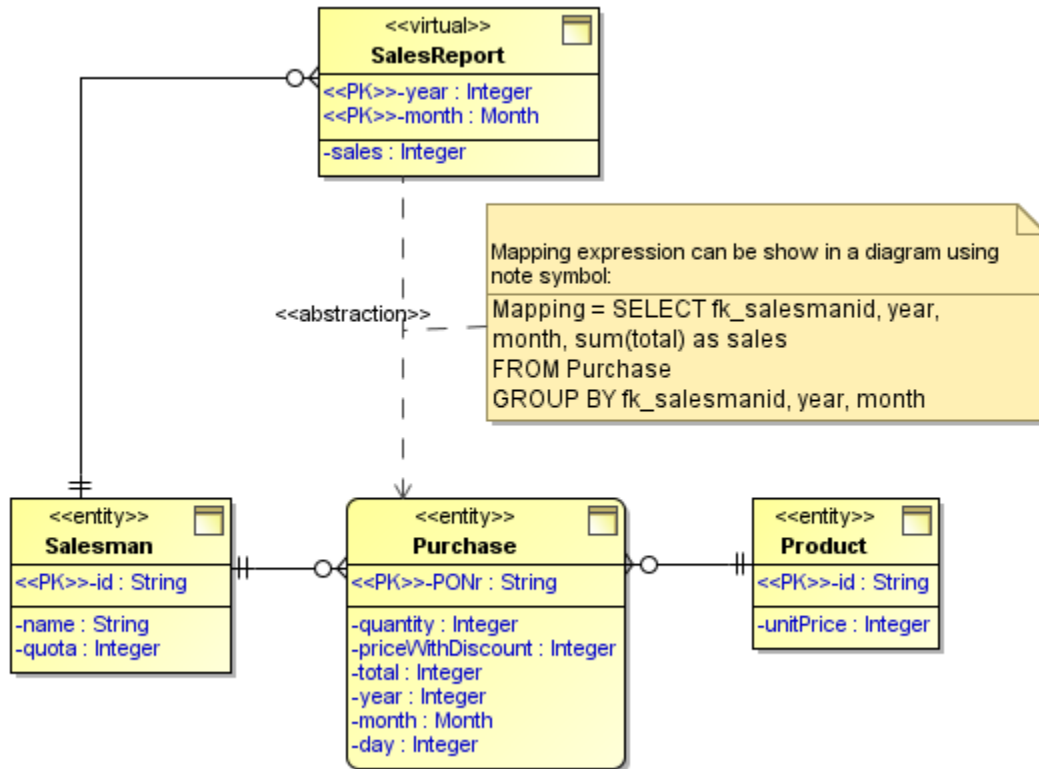


# Virtual entities

Virtual entities can be derived from information in other entities. They are marked with the keyword «virtual» on diagrams. They can be handled in the same manner as other entities.

Virtual entities roughly correspond to views in databases.

If you need to specify exactly how virtual entities are derived from other entities, you can use Abstraction relationships from UML. You can specify the derivation expression in the Mapping field.



Example of virtual entity usage in an ER diagram.