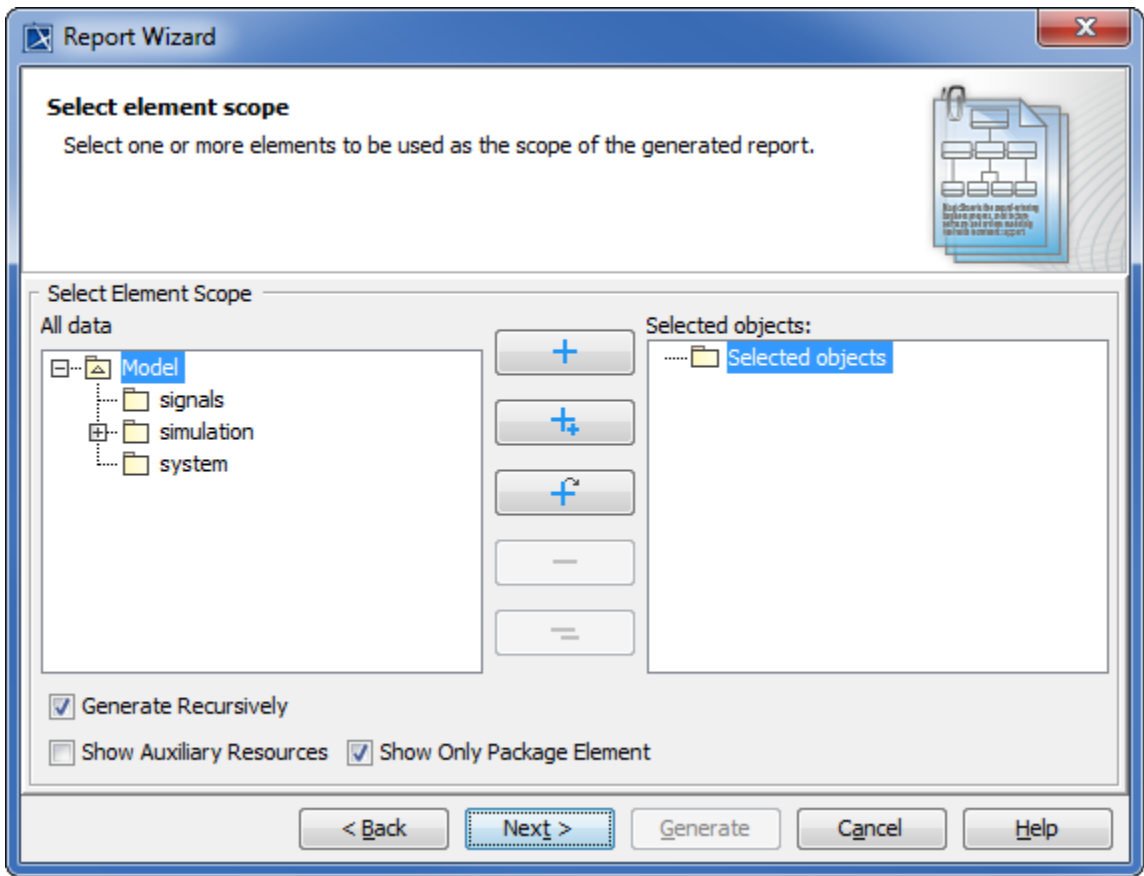


Select Element Scope pane

The **Select Element Scope** pane (see the figure below) allows you to select the scope of MagicDraw data to generate a report.



The Select Element Scope pane.

The table below describes the detail of each component in the **Select Element Scope** pane.

Component	Name description
All data tree	Select the desired packages from the All data tree then add them to the Selected objects tree.
Selected objects tree	Select packages and click the Add , Add All , or Add Recursively button. The selected packages will be added to the Selected objects tree.
Add button	Select packages and click Add . The selected packages will be added to the Selected objects tree.
Add All button	Select packages and click Add All . The selected packages and the elements directly owned by those packages will be added to the Selected objects tree.
Add Recursive button	Select packages and click Add Recursively . The selected packages and its recursive packages will be added to the Selected objects tree.
Remove button	Select packages and click Remove . The selected packages will be removed from the Selected objects tree.
Remove All button	Click Remove All and all packages in the Selected objects tree will be removed.

You can perform the following operations in the **Select Element Scope** pane:

- Add packages into the **Selected objects** tree.
- Remove a selected package from the **Selected objects** tree.
- Select or clear the **Generate Recursively** option.
- Show auxiliary resources.
- Show only package elements.

To add packages

- In the **Select Element Scope** pane, see figure above, select the packages from the **All data** tree and click **Add**, **Add All**, or **Add Recursively** to add them into the **Selected objects** tree.

To remove packages

- In the **Select Element Scope** pane, see figure above, select the packages from the **Selected objects** tree and click **Remove** or **Remove All** to remove them from the **Selected objects** tree.

To select or clear the **Generate Recursively** option

- Select or clear the **Generate Recursively** check box (see the figure above).

To include auxiliary resources

- Select the **Show Auxiliary Resources** check box and add auxiliary resources into the **Selected objects** tree (see the figure above).

To show only package elements

- Select or clear the **Show Only Package Element** check box (see the figure above).



The figure above shows the **UML 2 Elements** package and the **Generate Recursively** option were selected. It means that the **UML 2 Elements** package and its subpackages will be generated in the report.