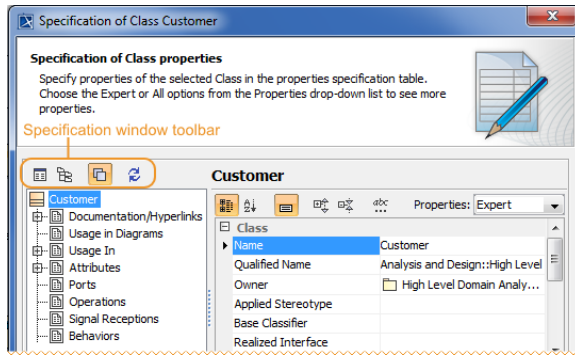






# Specification window toolbar



- Functions of Specification window
- Specification window toolbar
- Property group toolbar
- Quick filter

| Icon   | Name                       | Description  |
|--|----------------------------|--|
|   | Open Specification         | Opens specification of the selected referenced element in the same window.   |
|   | Select in Containment Tree | Selects the chosen element in the Containment tree of the Model Browser.   |
|   | Specification Opening Mode | If selected, the referenced Specification windows are opened in the same window. To navigate between specifications, use <b>Back</b> and <b>Forward</b> buttons. You can cancel the selection, if you need the Specification window to be open for each element in a separate window, for example, to compare specifications of several elements at the same time. |
|  | Refresh                    | Refresh data of the Specification window. Refresh the Specification window of an element to see if any changes that are not directly related to that element were made. Also you may need to refresh data if the Specification window is open for a long time.   |