

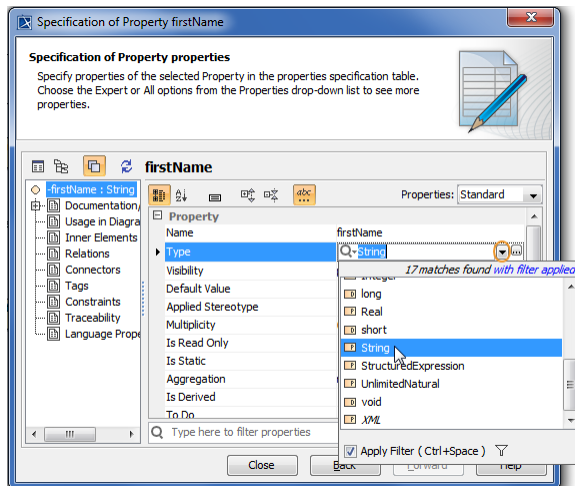
# Selecting single property value from editable list

This is the case of assigning a value to a property in one of the following ways:

- Selecting a value either from a predefined value (auto-completion) list or from the whole model in the **Select Element** dialog.
- Creating an element and selecting it as property value.

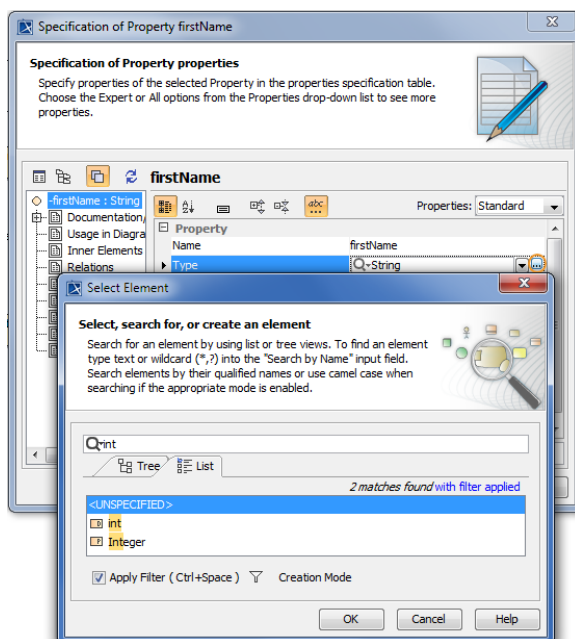
To select a property value from a predefined (auto-completion) list

1. Click an appropriate property value cell.
2. Click the arrow (see the highlighted button in the following figure).
3. In the drop-down list, select a value.



To assign a property value in the Select Element dialog

1. Click an appropriate property value cell.
2. Click the Edit button (see the highlighted button in the following figure). The **Select Element** dialog opens.
3. Select an existing or **create** an element.
4. Click **OK** when you are done.



To remove a value selected for a single value type property

---

1. Click an appropriate property value cell.
2. In the drop-down list, select *<UNSPECIFIED>*.