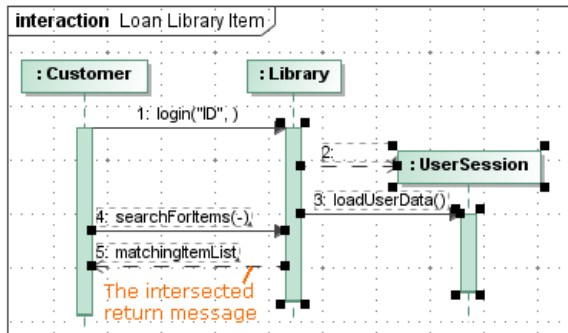


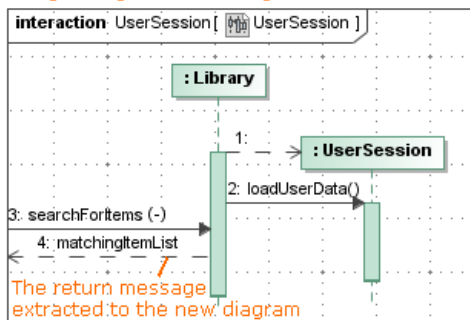
# Rules of extracting in Sequence diagram

Outgoing intersected messages are not selected for the extraction. The exception to this rule is the reply message. You can see an example in the following figure.

Source diagram



Target diagram - new diagram after extraction



## Related pages

- [Extracting](#)
- [Extracting in Sequence diagram](#)
- [Extract Sequence Wizard](#)
- [Working with model elements](#)