

Creating smart packages

A smart package can be created in one of the following ways:


- **From the shortcut menu of an element.** The newly created smart package is empty.
- **From the search results** (by saving either the search options or the search results as a smart package). The newly created smart package has either dynamic or static contents.

To create a smart package from the shortcut menu of an element

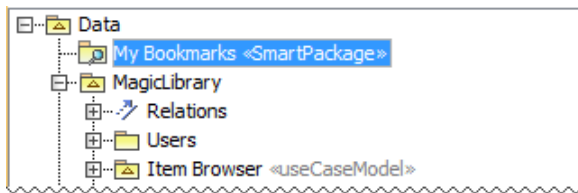
1. In the Containment tree, right-click the element. The shortcut menu opens.



The element should be a namespace, such as a package, a class, or a requirement.

2. Select **Create Element >  Smart Package**.
3. Type a name for the new smart package.
4. Press Enter to finish.

The new smart package is created, and you can proceed to [managing its contents](#) and [reviewing its specific properties](#).




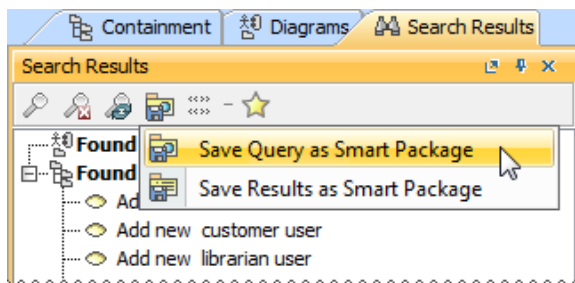
To create a smart package from the search results

1. Open the **Find** dialog, define search options, and perform the search. The search results are displayed in the **Search Results** tab on the Model Browser.



For more information about defining search options and analyzing the search results, refer to the [Find dialog](#) and [Search Results tab](#).

2. On the toolbar of the **Search Results** tab, click  and select one of the following commands:
 - **Save Query as Smart Package** to create a new smart package with dynamic contents. The search options will be saved as the **Query** property value.
 - **Save Results as Smart Package** to create a new smart package with static contents. The search results will be saved as values of the **Additional Elements** property.



The element Selection dialog opens.

3. In the dialog, select an owner of the new smart package and click **OK**.
4. In the Containment tree, type a name for the new smart package.
5. Press Enter to finish.

The new smart package is created, and you can proceed to [managing its contents](#) and [reviewing its specific properties](#).

Related Pages

- [Model Elements](#)
- [Stereotype](#)
- [Package](#)
- [Working with Profiles](#)