

# Working with Links

To create a link

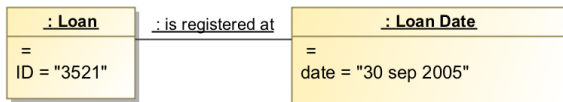
1. Create an [Object diagram](#).
2. In the diagram pane, create two Instance shapes by dragging and dropping the element onto the diagram pane. Select any Classifier you would like.
3. Draw a **Link** between the two Instance shapes.
4. The Select Association dialog opens.



## Select Association dialog

The Select Association dialog displays associations that are created between the classifiers of the Link.

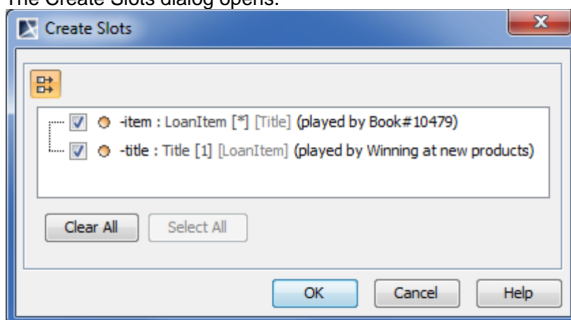
5. Select the appropriate association and click **OK**.
6. The Create Slots dialog opens. Select the appropriate slots and click **OK**.



Example of a link between two Instance shapes.

To create slots on a link

1. In the Object diagram's diagram pane, create two Instance shapes by dragging and dropping the element onto the diagram pane. Select any Classifier you would like.
2. Draw a **Link** between the two Instance shapes. The Select Associations dialog opens.
3. In the Select Association dialog, select the appropriate associations then click **OK**.
4. The Create Slots dialog opens.

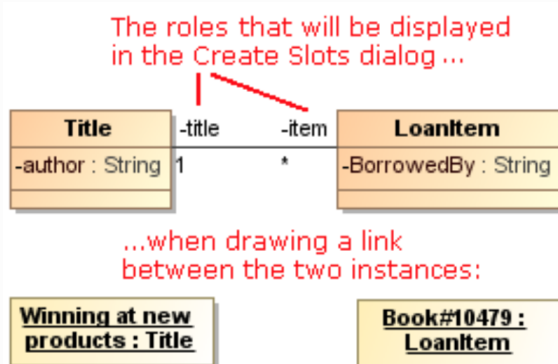


5. Select the slots.



## Create Slots dialog

The Create Slots dialog displays the roles of the association that is created between the classifiers of the Link.



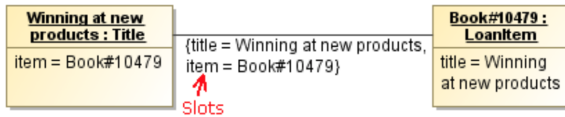
## Related Pages

- [Model Elements](#)
- [Classifiers](#)
- [Specification Window](#)
- [Link](#)

## Related References

- [Object Diagram](#)
- [Active Validation Rules for Links](#)

6. Click **OK**.



#### Automatic Creation of Slots on Links

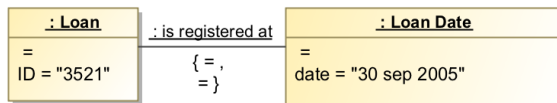
- The slots on the Link are created automatically only if the **Automatically Create Slots of Link** option is set to *true*. For more information, read the instructions on how to turn on automatic creation of slots in Links further on in this page.
- The slots on a Link are created automatically only when the Link references the association. For more information read on how to create a Link at the top of this page.

To turn on automatic creation of slots in links

1. In the window, click **Options > Environment**. The Environment Options dialog opens.
2. In the **General** options group, under the **Editing** subgroup, set the **Automatically Create Slots in Link** option value to *true*.

To display slot values on a link

1. Right-click on a Link. Select **Symbol Properties**. The Symbol Properties dialog opens.
2. Deselect the **Suppress Slots** check box, so it says *false*.
3. The result should look something like the figure below.



#### Suppress Slots Default Value

- The default value of the **Suppress Slots** option is *true*, that is, slots are not displayed on a Link.
- Slots on a Link are displayed in the following form: {< slot1 name > = < slot values > , < slot2 name > = < slot values > , ... }



#### Edit Compartment

You can select to display or hide an individual slot in the Compartment Edit dialog.

To open the Compartment Edit dialog

- Select the link on a diagram pane and on its [shortcut menu](#), click **Edit Compartment > Slots**.

To change a link end

1. On a diagram pane, select an end of a Link and move it to the other target.
2. The Link is connected to the other target.