
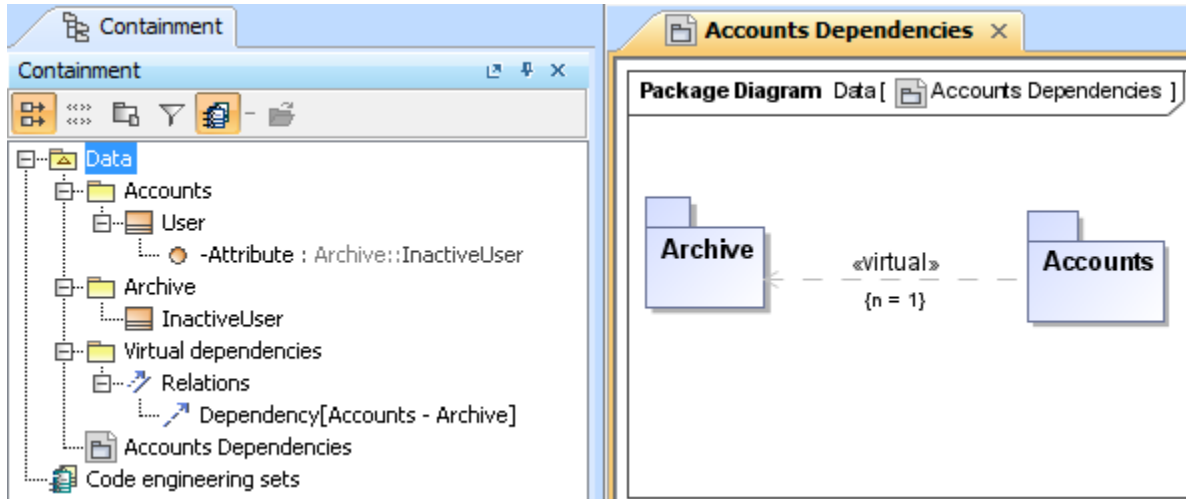


Package Dependency Diagram Wizard

 This functionality is available in Standard, Professional, Architect, and Enterprise editions only.

The **Package Dependency Diagram Wizard** creates the [Package diagram](#), that contains packages (created within a project) and shows the relationships between them. The diagram may reflect all packages in the project, or only selected ones. The **Package Dependency Diagram Wizard** collects all information needed for both analyzing dependencies and generating a new diagram.

If a package owns one or more elements used by or dependent on other package elements, the **Package Dependency Diagram Wizard** analyzes dependencies and creates «virtual» relations between the dependent packages, as shown in the following example.




The **Virtual dependencies** package containing dependency links is created after finishing the wizard. If more than one dependency exists between elements in the packages selected to analyze, the number of dependencies is assigned to the tagged value number {n=... } on the virtual dependency.

To create a [package diagram](#) using the **Package Dependency Diagram Wizard**

1. Open the **Package Dependency Diagram Wizard** by doing one of the following:
 - On the **Diagrams** menu, select **Diagram Wizards > Package Dependency Diagram Wizard**.
 - From the **Analyze** menu, select **Model Visualizer**. In the open Model Visualizer dialog, select the **Package Dependency Diagram Wizard** and click **Start**.
2. Follow the steps as directed by the wizard.

Related pages

 Unknown macro: 'list-children'

- [Dependency](#)
- [Dependency Matrix](#)
- [Package diagram](#)