

# Resource Manager

Resource Manager functionality allows you to manage local resources (installed with a modeling tool or downloaded separately) and resources available on the web.

With Resource Manager you can manage different types of resources, such as Profiles, Plugins, Templates, Language resources, Case studies/examples, Custom diagrams, and others.

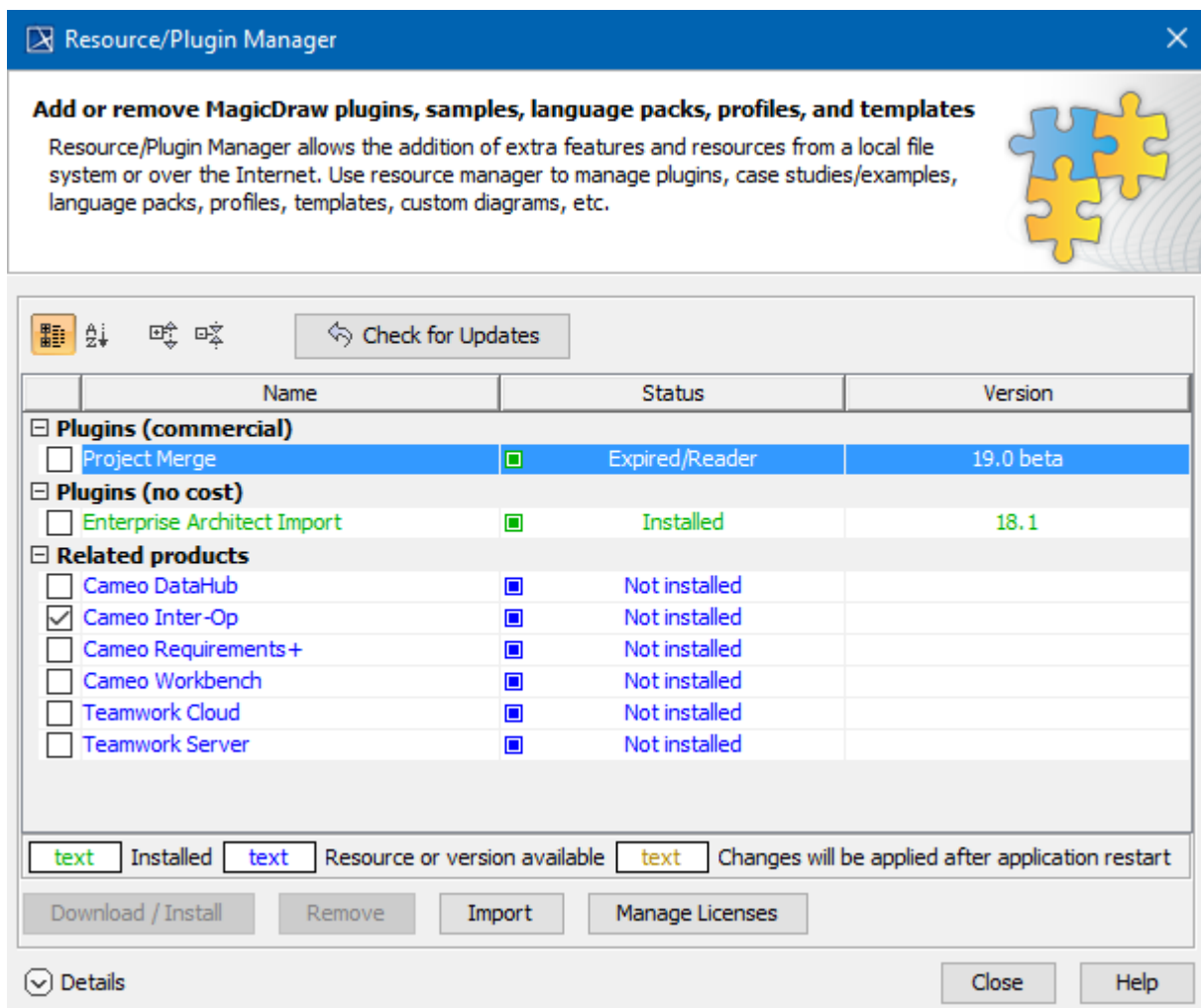
The Resource Manager functionality allows you to:

- Find needed resources and download or update them
- See the resource descriptions
- Create your own resources and share them
- Check resource dependency in the Resource/Plugin Manager dialog.

Using the **Resource/Plugin Manager**, you can import add-ons in a .zip format to your modeling tool.

To open the Resource/Plugin Manager dialog

- From the **Help** menu, select **Resource/Plugin Manager**.



The Resource/Plugin manager dialog.

To see the resource details

1. In the **Resource/Plugin Manager** dialog, select the necessary plugin or other resource.

2. Click **Details**. The dialog expands with the resource description at the bottom.

#### Related pages

- [Distributing Resources](#)
- [Distributing Profiles](#)
- [License Manager](#)