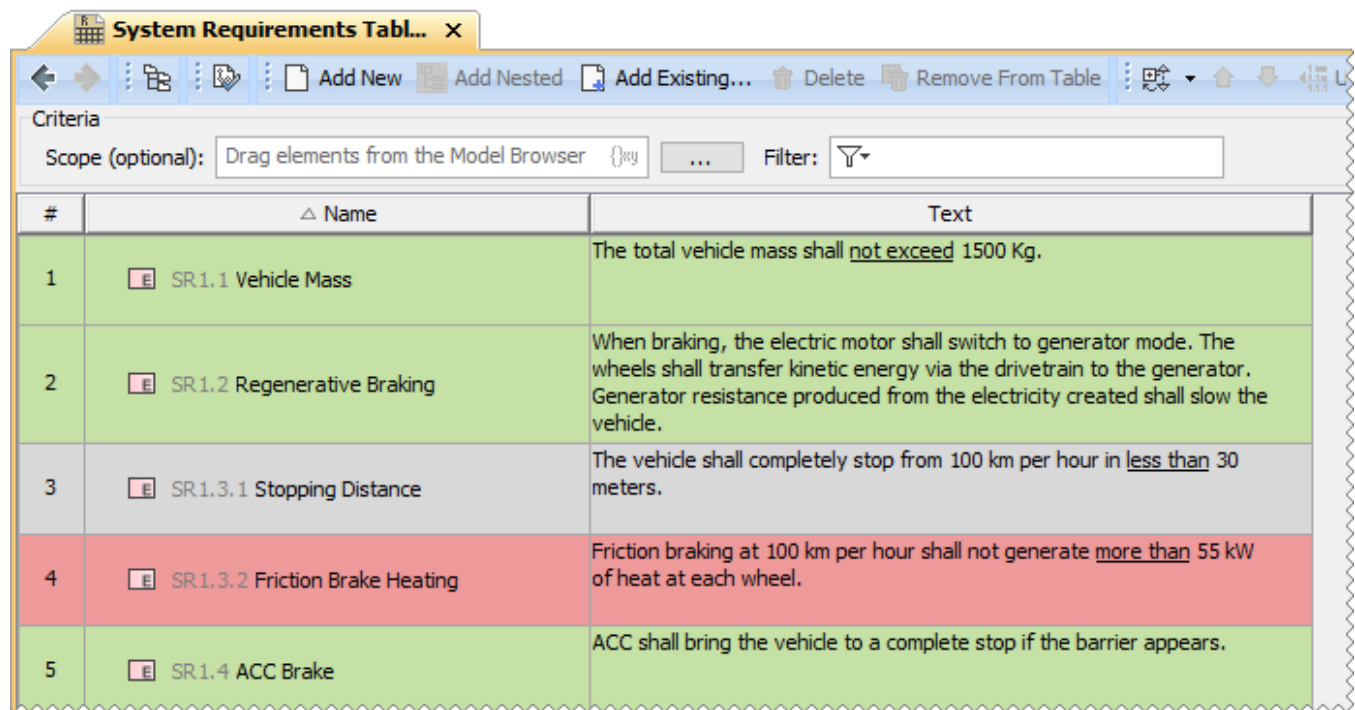







# Displaying and hiding Legends

On this page

- [Applying adornments without displaying Legend](#)


You can display or remove a Legend in an active diagram or table. It is also possible to [apply Legend adornments](#) in a diagram or table without displaying the Legend itself, as shown below.



#	△ Name	Text
1	 SR.1.1 Vehicle Mass	The total vehicle mass shall <u>not exceed</u> 1500 Kg.
2	 SR.1.2 Regenerative Braking	When braking, the electric motor shall switch to generator mode. The wheels shall transfer kinetic energy via the drivetrain to the generator. Generator resistance produced from the electricity created shall slow the vehicle.
3	 SR.1.3.1 Stopping Distance	The vehicle shall completely stop from 100 km per hour in <u>less than</u> 30 meters.
4	 SR.1.3.2 Friction Brake Heating	Friction braking at 100 km per hour shall not generate <u>more than</u> 55 kW of heat at each wheel.
5	 SR.1.4 ACC Brake	ACC shall bring the vehicle to a complete stop if the barrier appears.



A Requirement Table displaying only Legend adornments

To display a Legend in an open diagram or table

- Create a Legend in a diagram or table.
- Drag an existing Legend from the model browser to a diagram.
- Complete the following steps:
  1. Click  ▼ in the diagram or table toolbar.
  2. In the drop-down menu, select **Display Legends**.
  3. Select the legend(s) you want to display.
  4. Click the **Display** button.

Completing one of the actions described above displays the Legend in an open diagram or table, and applies its Legend Item adornments to the relevant diagram shapes or table rows.

To remove a Legend from an open diagram or table

- Delete the Legend shape from a diagram.
- Hover the mouse pointer over a legend in a table, click  and select **Hide**.
- Complete the following steps:
  1. Click  ▼ in the diagram or table toolbar.
  2. In the drop-down menu, select **Remove Legends**.
  3. Select the legend(s) you want to remove.
  4. Click the **Remove** button.

The actions described above remove a Legend from an open diagram or table and Legend Item adornments are no longer applied to the relevant diagram shapes or table rows.

**Keeping Legend adornments**  
When you delete a Legend shape in a diagram or select the **Hide** command for a Legend in a table, the question message appears allowing you to keep Legend Item adornments after the Legend is removed.

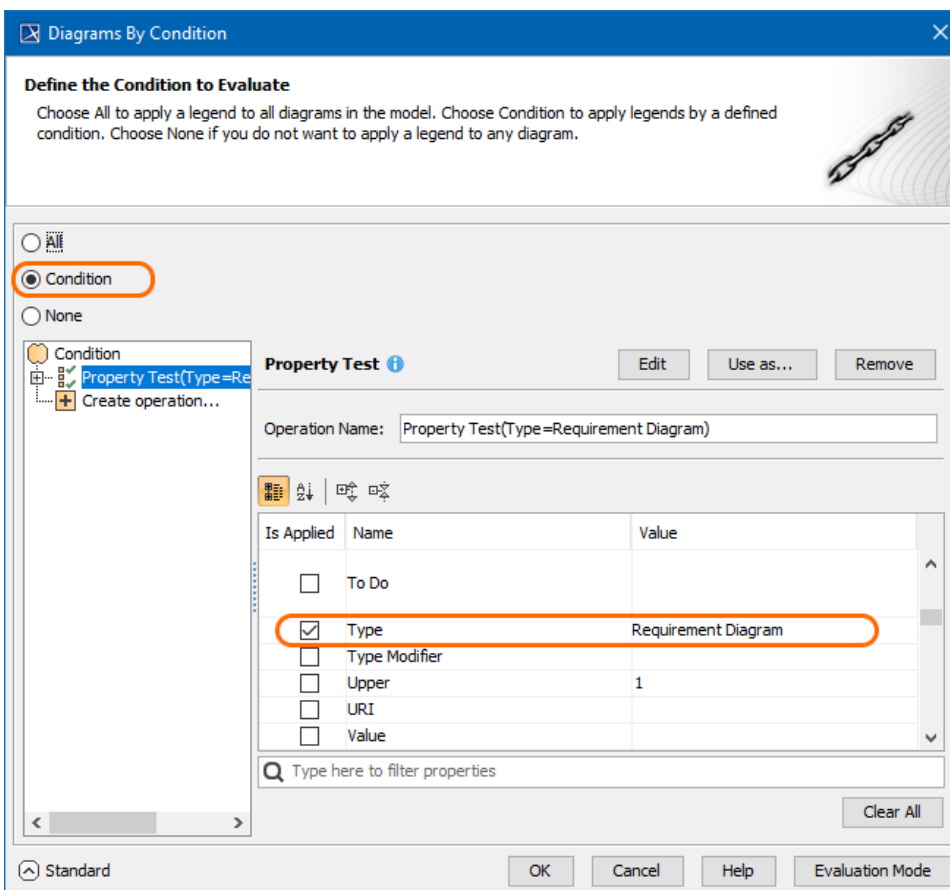
## Applying adornments without displaying Legend

You can apply Legend adornments in a diagram or table without displaying the Legend. To achieve this, define the Legend scope by selecting specific diagrams of your model (the **Specific Diagrams** property) and/or defining the condition that diagrams should meet for the Legend to be applied (the **Diagrams by Condition** property).

### Example

Let's say that you want to apply the adornments of a Legend to all Requirement Diagrams and one specific Requirement Table of your model. To do this, follow these steps:

1. Open the Specification window of a Legend.
2. Select the **Diagrams by Condition** property specification cell and click **...**.
3. In the **Diagrams by Condition** dialog, select the **Condition** radio button.
4. In the Property Test operation specification area, select the **Type** property and enter the **Requirement Diagram** as its value.



5. Click **OK**.
6. Select the **Specific Diagrams** property specification cell and click **...**.
7. In the **Select Diagram** dialog, select the desired Requirement Table.
8. Click **OK**.

After completing the above steps, the Legend adornments are applied to all Requirement Diagrams and the selected Requirement Table. By specifying the **Diagrams by Condition** property, you also ensure that the Legend adornments will be automatically applied to newly created Requirement Diagrams as well, because they meet the defined condition.

### Related pages

- [Legends](#)
  - [Creating Legends](#)

- [Creating Legends automatically](#)
- [Creating and managing Legend Items](#)
- [Specifying Legend Items](#)