

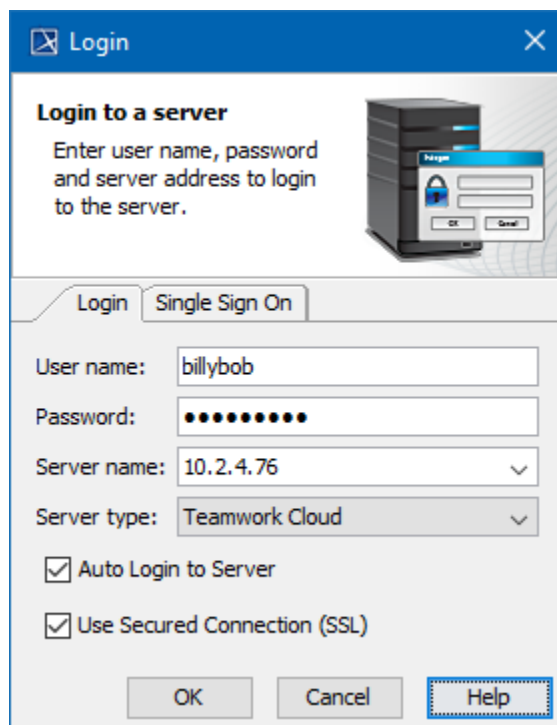
# Starting a collaboration session

Before logging in to any of No Magic's servers, you must:

- Have a user account on the server.
- Be sure the server is running.
- Ensure the server and the client application use the same Java version. Small Java version updates may differ.

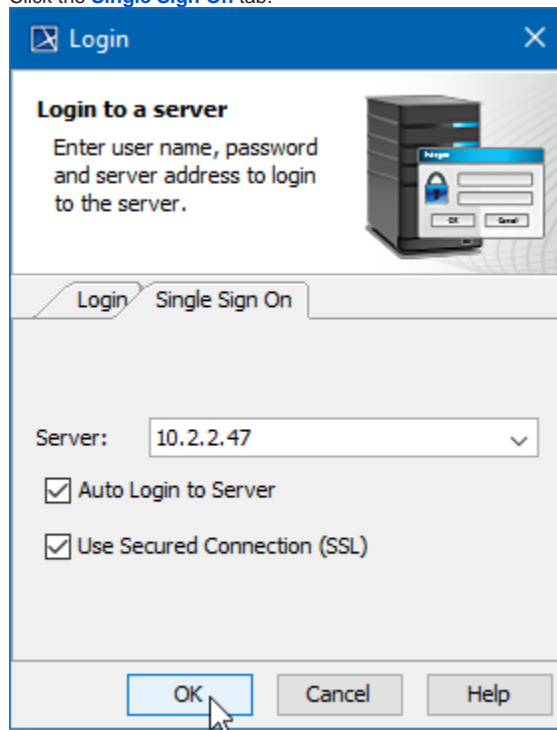
To log in to a server

1. From the **Collaborate** menu, select **Login**. The **Login** dialog opens.
2. Login to a server:
  - To login using "username/password" authentication:
    - i. Click the **Login** tab.
    - ii. Type your user name and password.



- For users having a single ID and password for multiple software systems (valid only for Teamwork Cloud Server):

- i. Click the [Single Sign On](#) tab.



3. Provide the server name (address) and select server type. If you need to specify a server port, type `<server name> : <port number>`, for example `10.2.2.47:3579`.

**For Teamwork Cloud Server users**

If a **Single Sign On** property is selected to login, the Teamwork Cloud Server is automatically selected as a type.

4. If you want the client application to remember your credentials and automatically log in to the server next time upon starting the client application, select the **Auto Login to Server** check box.
5. If you need to connect to the server using the SSL connection, select the **Use Secured Connection (SSL)** check box.



The SSL connection must be established on both the server and the client side.

6. Click **OK**.
7. Wait while you are connected to the server, and then you can start performing collaborative tasks.

To log out of the server

- From the **Collaborate** menu, select **Logout**.

**Related pages**

- [Single Sign-On Authentication](#)
- [Working with Teamwork Cloud projects](#)
- [Working with Teamwork Server projects](#)