

# Creating the Stopwatch structure

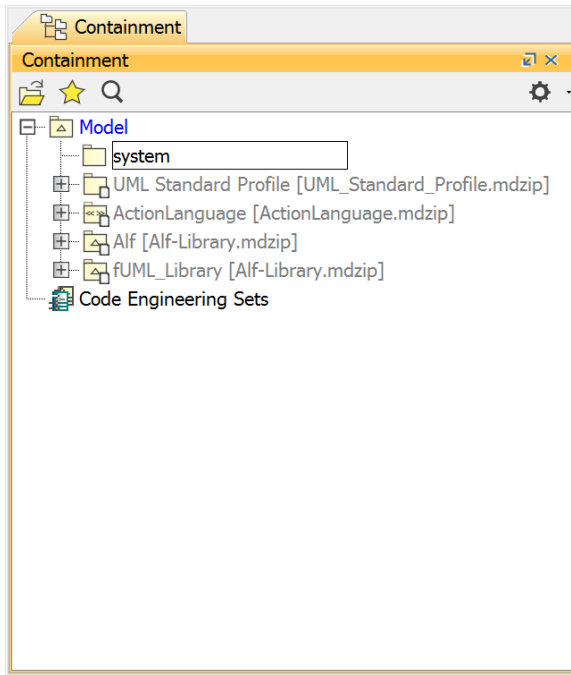
First, use the [Alf project template](#) to create a new project called *StopWatch*. Next, define a stopwatch Class and its attributes using a Class diagram.

To create a *StopWatch* Class (on a Class diagram in a new Package)

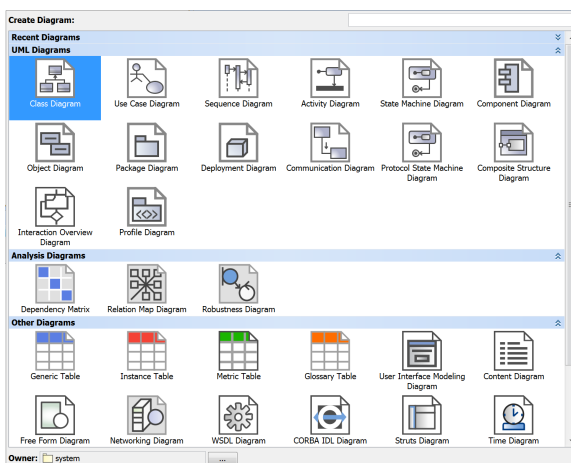
## Related pages

- [Alf project template](#)

1. Right click *Model* in the Model Browser and select **Create Element > Package**. A new Package will be created under the *Model* node. Name the created Package *system* (see the following figure).



2. Click on the *system* package and create a new Class diagram in the package by clicking the **Create Diagram** button on the toolbar. The **Create Diagram** dialog will open (see the following figure). Select **Class Diagram**.

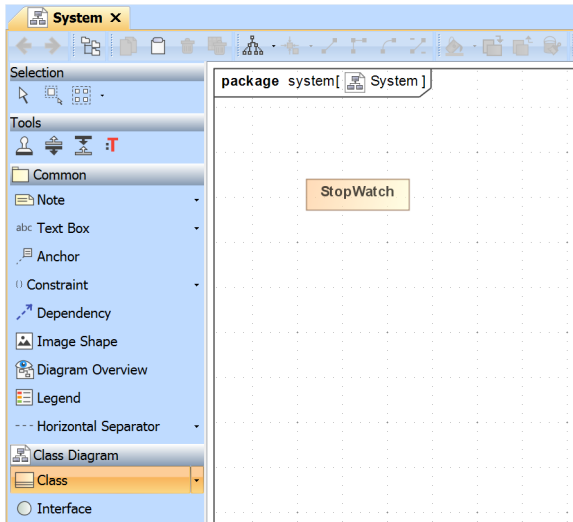


3. Name the class diagram *System*.



You can also use the context menu of the *system* package to create a new Class diagram by right-clicking the *system* package and selecting **Create Diagram > Class Diagram**.

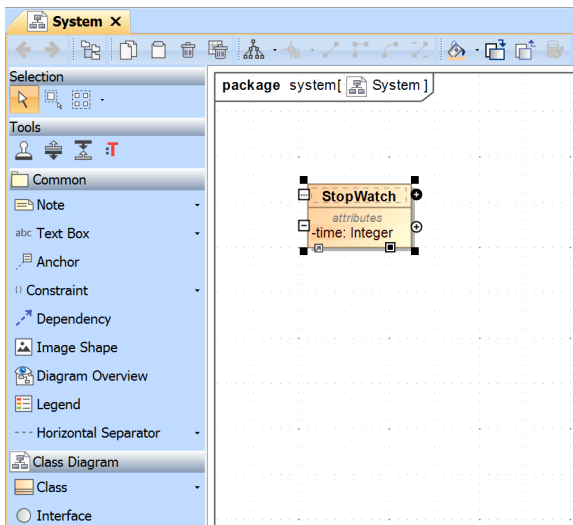
4. Use the diagram toolbar of **Class Diagram** to create a new **Class** element and name the created Class *StopWatch* (see the following figure).



Now add a *time* attribute to the *StopWatch* class. Since this attribute represents the elapsed time in seconds, type it as *Integer*.

To add a *time* attribute to the *StopWatch* class

1. Click the small **Create Element** button on the *StopWatch* class and select **Property**. A new attribute will be created in the *StopWatch* class.
2. Name the attribute *time* and give it type *Integer* by directly typing that into the attribute compartment of the *StopWatch* class (see the following figure).



Next: [Creating the StopWatch state machine](#)