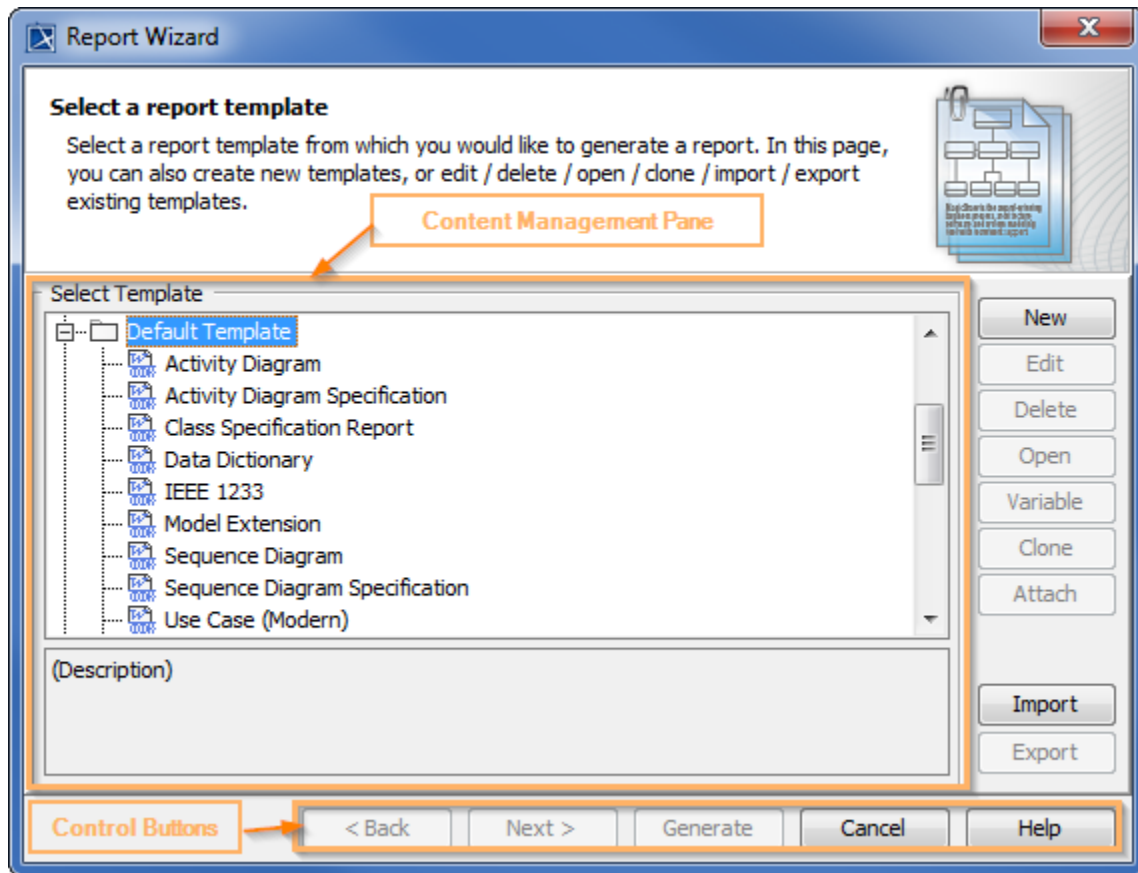


Report Wizard dialog

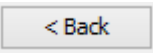
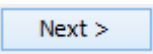
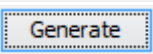
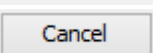
The Report Wizard dialog, see figure below, consists of 2 panes: **Control buttons** and **Content Management pane**.



The Report Wizard Dialog.

Control buttons

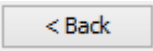
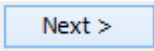
There are 4 control buttons:

- The  button is used for proceeding to the previous content management pane.
- The  button is used for proceeding to the next content management pane.
- The  button is used for generating a report.
- The  button is used for cancelling the report generation process.

Content Management pane

This pane is used for managing the template content and includes the following sub-panes:

- [Template Management Pane](#)
- [Report Data Management Pane](#)
- [Select Element Scope pane](#)
- [Generate Output pane](#)

Click the  or  button to go to a specific pane.

Related pages

- [Template Management Pane](#)
- [Report Data Management Pane](#)
- [Select Element Scope pane](#)
- [Generate Output pane](#)