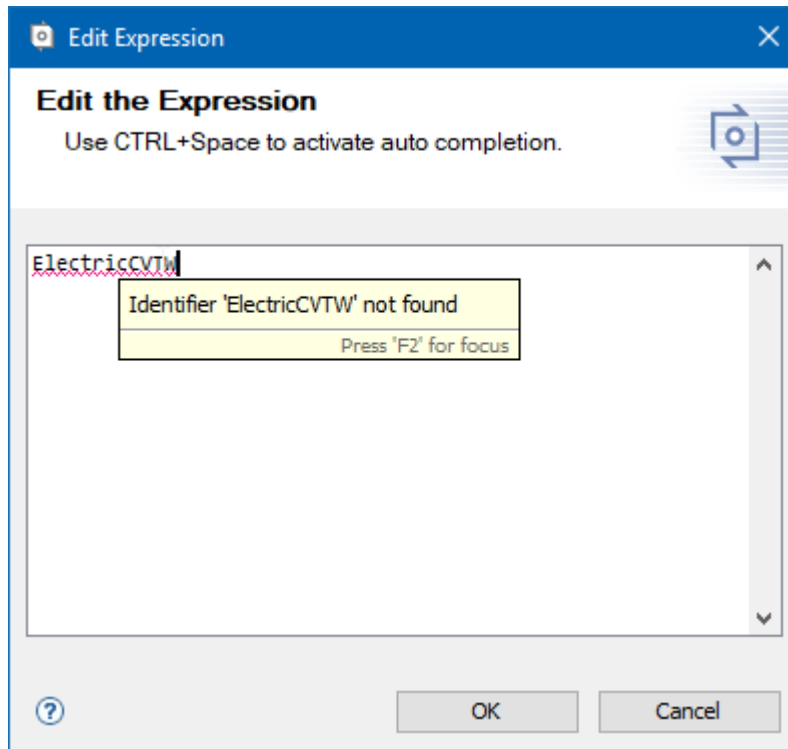


Editing expressions

The validation tool allows you to check your expression for syntax and logic errors. You can open an expression in the **Edit Expression** dialog and fix an error manually or use a [Model validation tool](#) to find errors. If an incorrect item is typed in the expression, it is underlined in red. Hold the mouse pointer over the underlined text to get a notification with an error explanation.



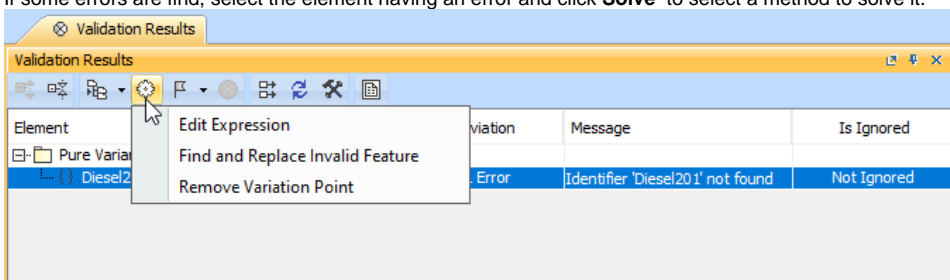
The example of incorrect identifier.

To fix errors manually

1. Open the [Specification window](#) of the element having the variation pint assigned.
2. In the property group list, expand the **Constraint** property group and select the variation point you want to edit.
3. Select the **Expression** property value cell and click the **Edit** button.
4. The **Edit Expression** dialog opens. Edit the expression and click **OK** after you are done.

To fix errors using a Model validation tool

1. On the main menu, click **Analyze > Validate**. The **Validatgion** dialog opens.
2. In the **Validation Suite** list, select **Pure Variants Validation**. You can specify values for **Validate For** and **Minimal Severity** according to your needs.
3. Click **Validate**. Validation results are displayed in the **Validation Results** window.
4. If some errors are find, select the element having an error and click **Solve** to select a method to solve it.



Related pages

- [Integration with pure:variants](#)
- [Model validation tool](#)

