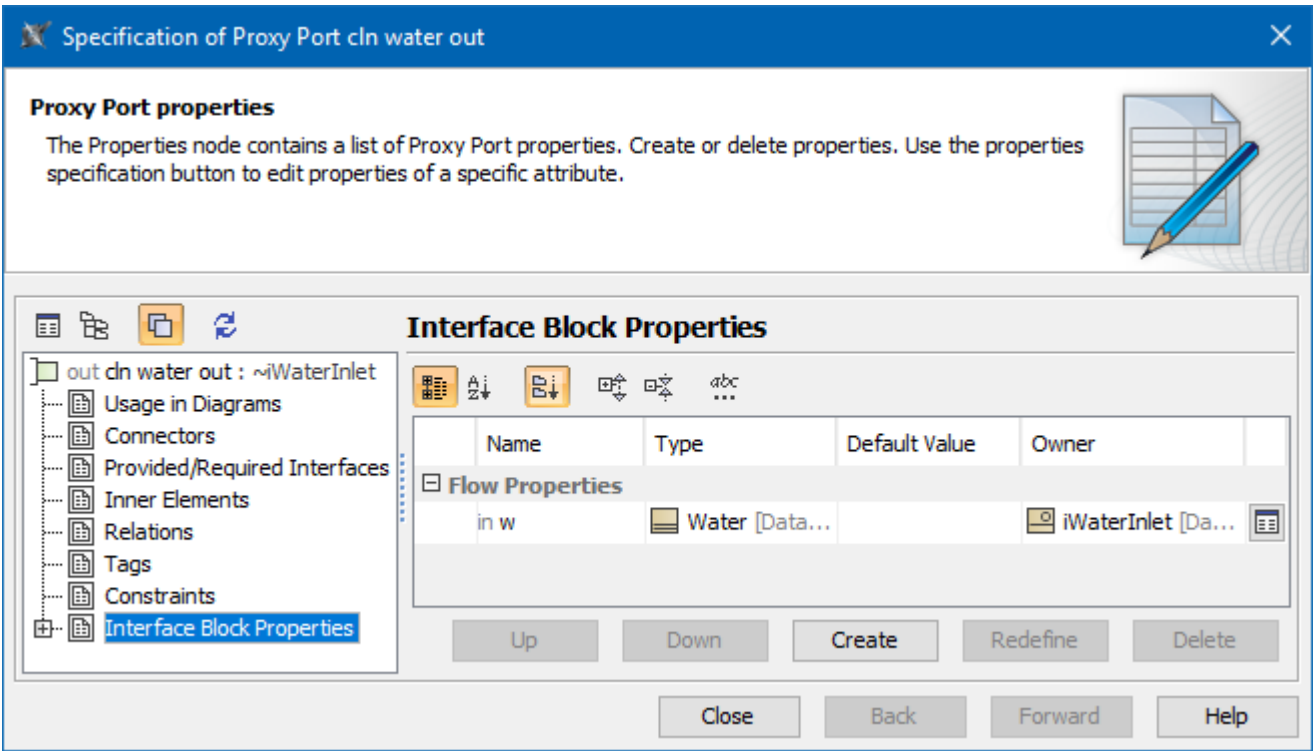



Managing Interfaces of the Proxy Port

The detailed information about Proxy Port interfaces is collected on the left of the Port [Specification window](#) > **Interface Block Properties**.



The Interface Block properties group in the Specification window of the Proxy Port.

Column name	Description
Name	Compartment name.
Type	Compartment type.
Default Value	Use to set the value manually.
Owner	Interface Block which is the owner of the selected Proxy Port .

Button name	Description
	Opens the Specification window of the compartment
Up	Move item to upper position in the list. The items are automatically renumbered after moving.
Down	Move item to lower position in the list. The items are automatically renumbered after moving.
Create	Opens the list with the available to create properties. Click to create the Value Property , Flow Property or Reference Property .
Redefine	Duplicates the selected item and marks its name in ascending order.
Delete	Removes the selected item from the list.