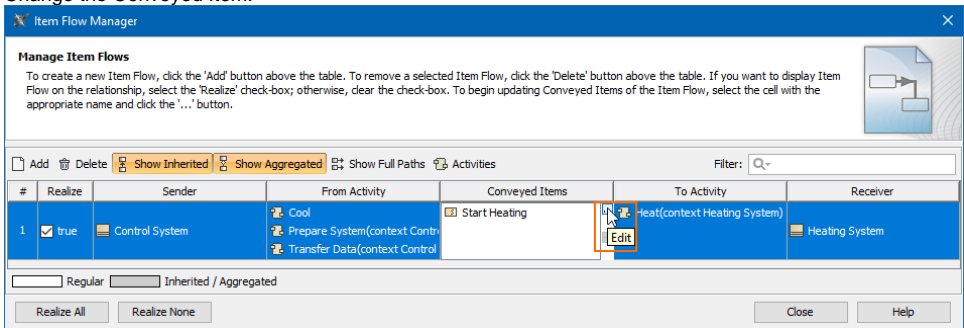


# Item Flow Manager dialog


The **Item Flow Manager** dialog enables you to analyze and manage Item Flow data. You can:

- Edit existing Item Flows by adding new Conveyed Items
- Realize or hide existing Item Flows on selected relationship
- Change the Conveyed Item.



- Specify From and To Activities.

To open the **Item Flow Manager** dialog

1. Select Association, Connector, Association, Control Flow, Object Flow, or Message in the diagram pane.
2. On the smart manipulator, click . The **Item Flow Manager** dialog opens.