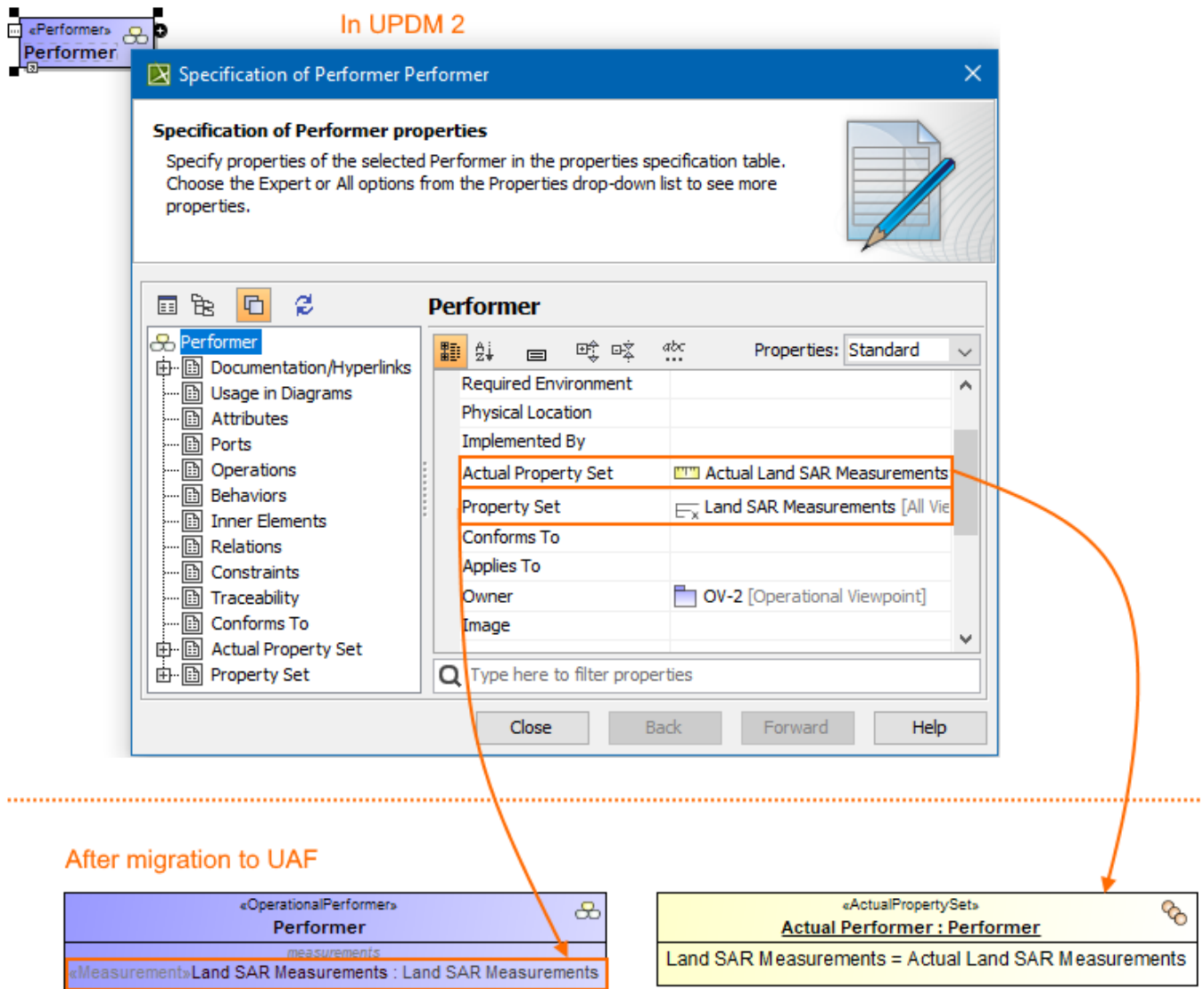


# Measurements migration

If the UAF element is a Property Set (e.g. Operational Performer, Resource Performer, Information Element, Service Specification, Capability), the new measurement modeling approach is applied after the migration from UPDM 2.

The new approach includes:

- If an element has Property Set property with value (Measure Type or Measurement Set), then the new Measurement attribute is created under the element with the type Measure Type / Measurement Set.
- If an element has an Actual Property Set with value Actual Measurement Set , then the instance of that element is created. The instance gets a slot which defining feature is a Measurement attribute from the element. The value of that slot is the element which was set in the Actual Property Set property.
- Measurement attribute is created for each value in the Property Set property.



An example for the measurements migration from UPDM 2 to UAF.

If an element is a measurable element (e.g. Operational Activity, Operational Exchange, Resource Role), the approach of applying measurements stays the same as in UPDM 2. Property Set property is renamed to Measurement Set. Actual Property Set property is renamed to Actual Property Set.