

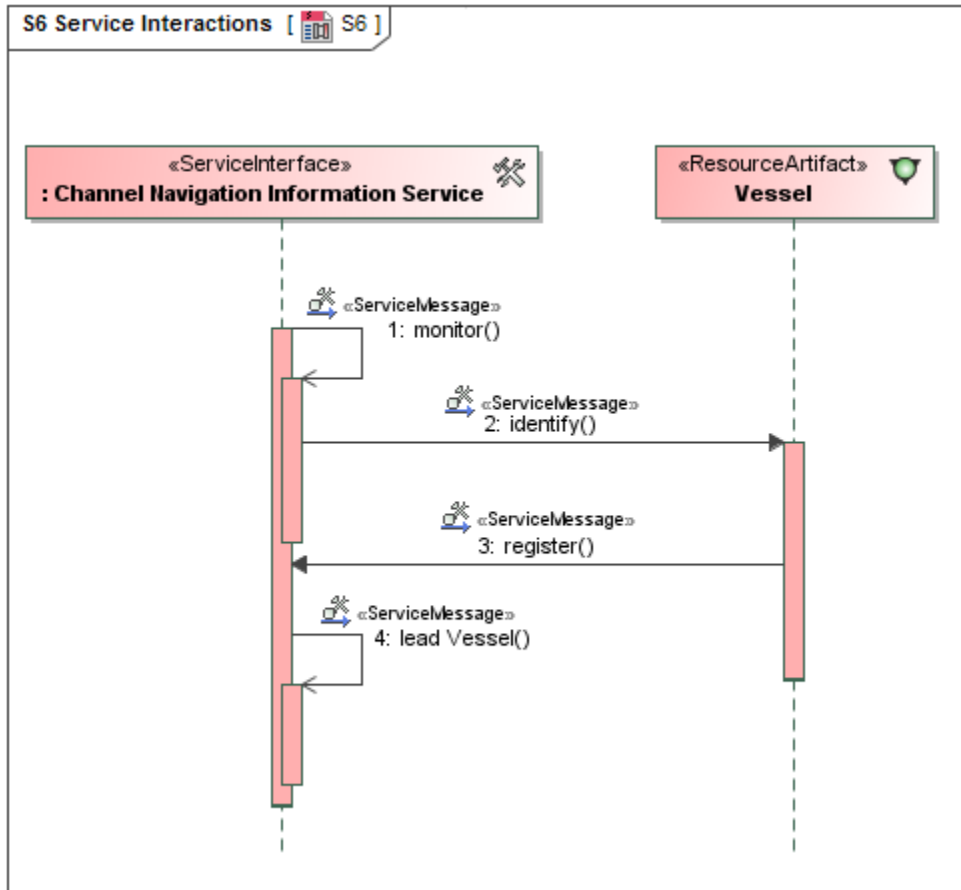
# S6 Service Interactions

## Description

The purpose of S6 Service Interactions view is to specify how a service interacts with external agents, and the sequence and dependencies of those interactions. An S6 product does not specify the sequencing of an orchestrated set of services (see [L6 - Logical Sequence](#)). Its purpose is to specify the general sequence of interactions that are possible for a given service.

## Implementation

The S6 view can be represented using a S6 Service Interactions diagram which is based on the UML Sequence diagram.



## Related elements

- [Interaction](#)
- [Service Message](#)
- [Service Interface](#)
- [Flow Property](#)