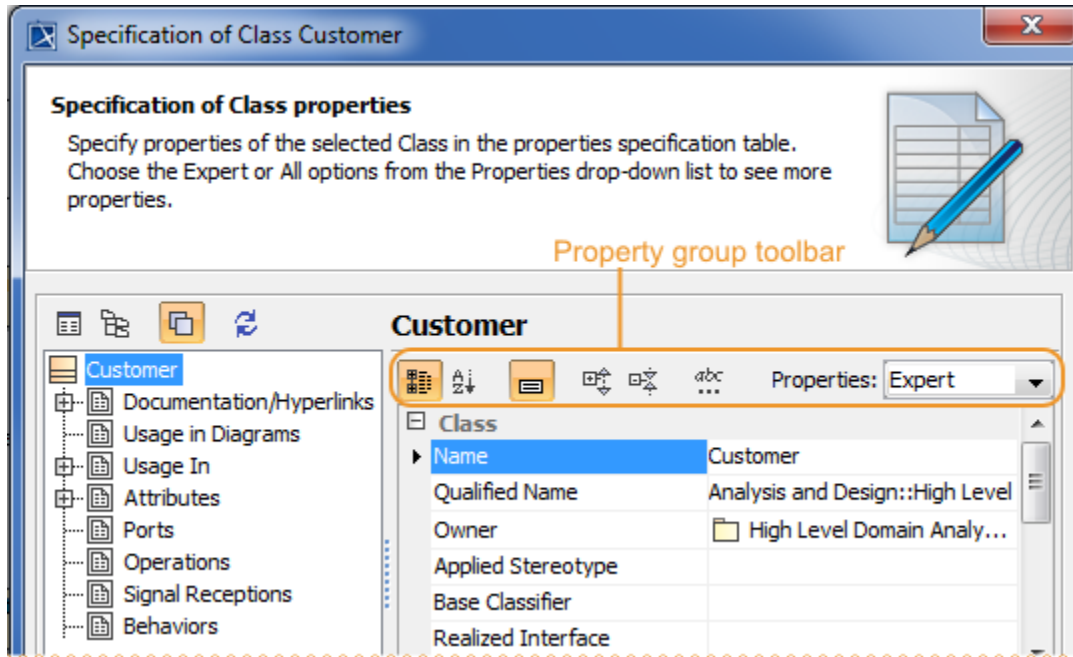



Property group toolbar



Icon	Name	Function
	Categorized view	Groups properties by the categories.
	Alphabetical view	Lists properties alphabetically.
	Show Description	Shows or hides the description area of the selected property.
	Expand All	Expand all collapsed categories.
	Collapse All	Collapse all expanded categories.
	Strip Multiline Text	If the text in the property cell (e.g., ToDo) covers more than five rows, it is finished with ... showing only those five rows. The complete text is available in the tooltip or in the cell edit mode.
	Properties	Change the properties display mode to Standard , Expert , or All . Select Customize , to customize displayed properties .
	Show Private Inherited	Show the inherited properties.
	Hide Inherited Relations	Hide the relationships that are inherited.

The toolbar configuration can vary according to the selected property group.

Related pages

Unknown macro: 'list-children'