

# Importing a template to MagicDraw using Report Wizard

On this page

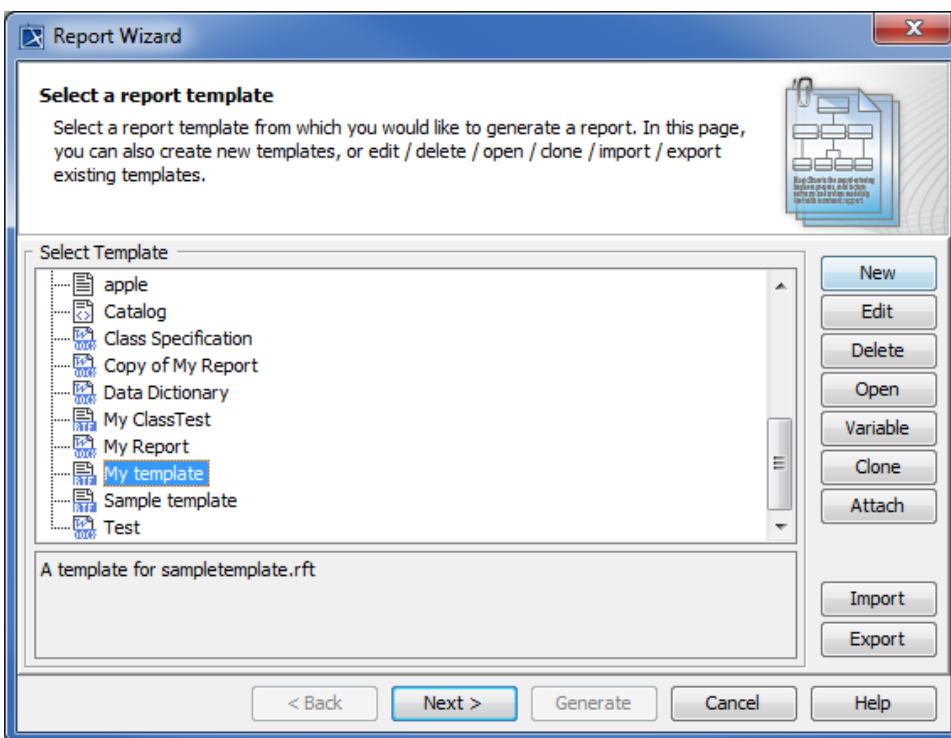
- [Importing a template to MagicDraw](#)
- [Glossary](#)
- [More information about working with templates and reports](#)

## Importing a template to MagicDraw


Once you have created a template, you will need to import it into MagicDraw by using Report Wizard.

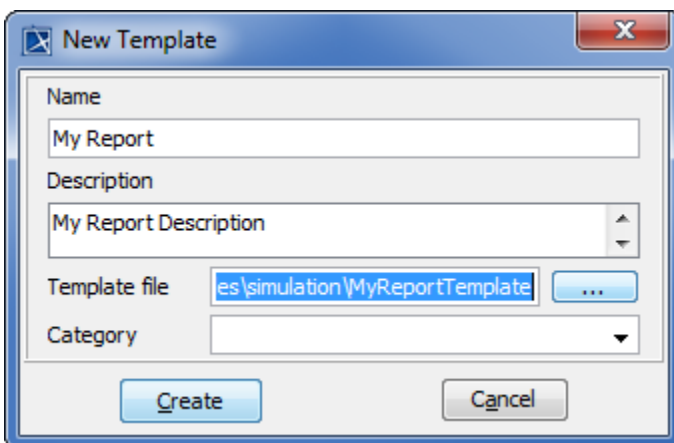
To import a template into a modeling tool using Report Wizard

1. Click **Tools > Report Wizard** on the MagicDraw main menu.
2. Click the **New** button in the **Select a report template** wizard. The **New Template** dialog will open.


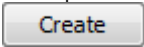


Opening the Report Wizard dialog and creating a new custom template by clicking the New button.

3. In the **New Template** dialog, type the name and description. Select a category, and then click .



Entering the new template name and description, and then selecting a template file in the New Template dialog.

4. Find the template file that you have created, and click .
5. Click  to import the template.

To generate a report based on a template, select the template (in this example, **My template**) from the template list, and follow the steps as instructed by the wizard. See [Report Wizard User Guide](#) for more information.

## Glossary

- **Report template**  
Ready-made report configurations that you can use to quickly create a specific type of report in Report Wizard.

## More information about working with templates and reports

For more information about working with templates and reports, visit the following pages:

[Template Management Pane](#)

[Default templates](#)

[Report Data Management Pane](#)

[Generating Reports from Report Wizard](#)