

Excel and CSV Sync Options dialog


On this page

- [Opening the Excel/CSV Sync Options dialog](#)
- [Description of the Excel/CSV Sync Options dialog areas](#)
 - [Select Excel/CSV file area](#)
 - [Sync Options area](#)
 - [Mapping Options area](#)
 - [Mapping area](#)

The **Excel/CSV Sync Options** dialog allows you to specify settings before syncing data between an Excel/CSV file and a table. You can select files for syncing and define syncing and mapping options in this dialog.

Opening the Excel/CSV Sync Options dialog

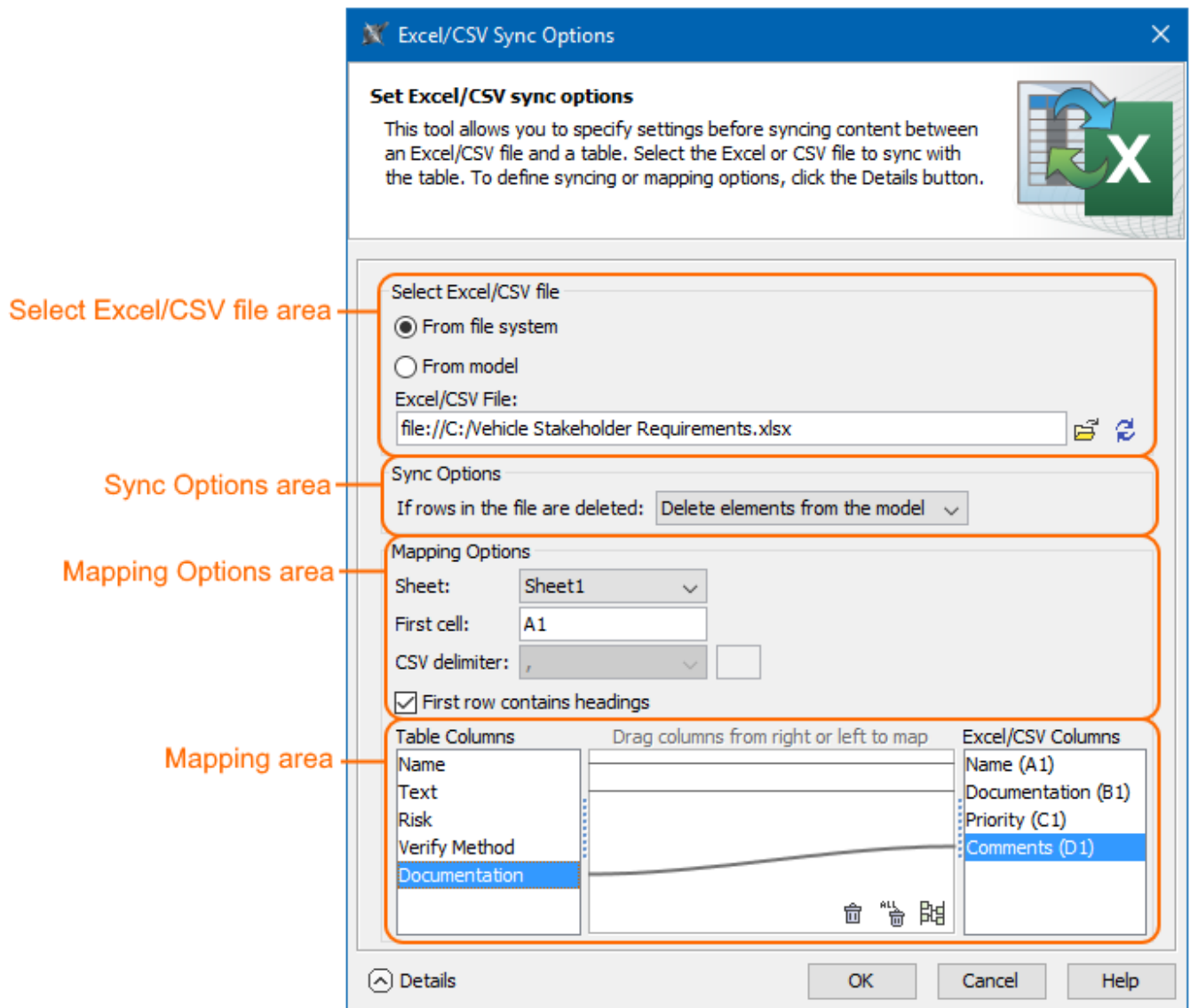
To open the **Excel/CSV Sync Options** dialog

- In the table toolbar, click  and do one of the following:
 - Select the **Sync Options** command.
 - Select the **Excel/CSV File > Select File**. Click the **Details** button on the left bottom corner of the dialog.The **Excel/CSV Sync Options** dialog opens.

Description of the Excel/CSV Sync Options dialog areas

The **Excel/CSV Sync Options** dialog consists of the following areas:

- [Select Excel/CSV file area](#)
- [Sync Options area](#)
- [Mapping Options area](#)
- [Mapping area](#)





The main areas, highlighted in orange, in the Excel/CSV Sync Options dialog: select file, sync, mapping options, and mapping.

Select Excel/CSV file area


The Select Excel/CSV file area allows you to select the Excel or CSV file from your file system or from your model if the Excel or CSV file is attached to a project. [How to attach the file to a project >](#)

The Select Excel/CSV file area contains the buttons described in the following table.

Button	Description
	If you select From file system , opens the Open dialog. If you select From model , opens the Select Excel/CSV file dialog.
	Refreshes the mapping area after changing the file.

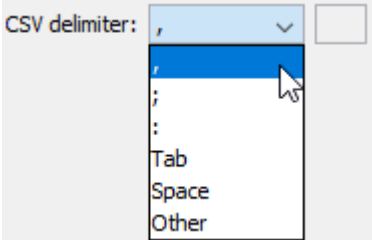
Sync Options area

The Sync Options area contains one option that allows you to specify the sync mechanism behavior when importing data to a table if rows in your file are deleted. All available values are described below.

Sync option	Description
If rows in the file are deleted	<ul style="list-style-type: none"> • Delete elements from the model - deletes the same elements that were deleted in the file from your model. <div style="border: 1px solid red; padding: 5px; margin: 10px 0;"> <p> Some elements are read-only in Excel file, they cannot be deleted from the model.</p> </div> <ul style="list-style-type: none"> • Remove elements form the table - removes the same elements that were deleted in the file only from the modeling tool table, not from the model. • Mark as obsolete (default) - The table Legend automatically displays and highlights the removed elements (obsolete) in red.




Mapping Options area

The Mapping Options area allows you to specify mapping options. The following table lists all available options.


Mapping option	Description
Sheet	Select the Excel file sheet you want to sync. The first sheet is selected by default. It is available only for Excel files.
First cell	Select the Excel file cell you want to start syncing from. The first cell filled with data is read by default. If the selected sheet is empty, it reads from the A1 cell. It is available only for Excel files.
CSV delimiter	<p>Select the delimiter of the CSV file from the drop-down list. If you want to specify the custom delimiter in the next box, select Other. By default, the comma (,) is selected. It is available only for CSV files.</p> 
First row contains headings check box	Clear the check box if your Excel/CSV file does not contain headings. The check box is selected by default.

Mapping area

The Mapping area allows you to manage mapping between modeling tool table columns and Excel/CSV table columns by creating new mappings, re-mapping, or deleting them:

- To create a new map or re-map one by one, drag columns from the left tree/right tree onto columns in the right tree/ left tree.
- To create a new map or re-map all columns in the ordinal position, click  at the bottom of the mapping area.
- To delete mapping one by one, select an appropriate map and click  at the bottom of the mapping area.
- To delete all mappings, click  at the bottom of the mapping area.

If you do not define your own mapping - that is, the mapping area is empty - the columns by default are mapped on the ordinal position.

 The hashtag (#) column from the modeling tool table is not included in the mapping.

Related pages

- [Sync with Excel or CSV files](#)

- [Table toolbars](#)
- [Legends](#)