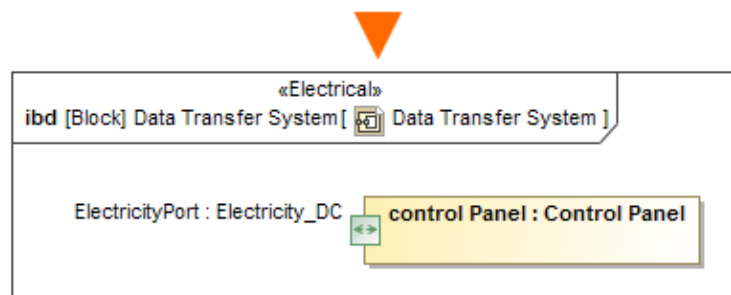
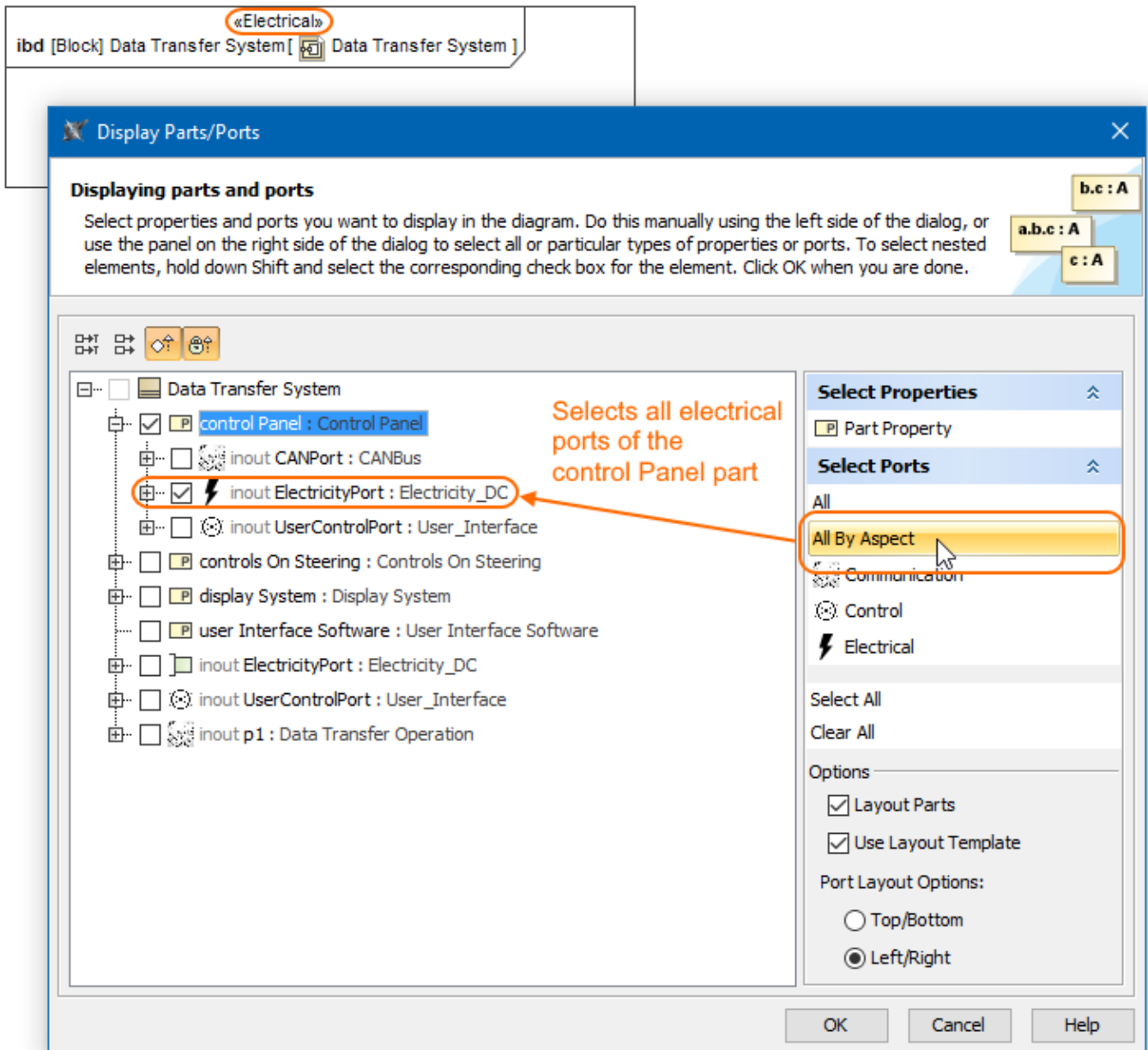


# Displaying parts and ports according to aspects

Before using this feature, make sure:

- The diagram with aspect is created. [The main workflow of using aspects >>](#)
- The part and/or port stereotype names matches the aspect name. [Matching rules >>](#)

When displaying Parts/Ports in the aspect diagram, e.g., Electrical *Data Transfer System* Internal Block Diagram, you can display all the parts/ports of an appropriate aspect, e.g., Electrical, by using the **All By Aspect** button. This button can be found in the three places mentioned above in this section. After selecting this button, all parts or ports of the same aspect as the diagram's can be displayed. The figure below demonstrates the usage of this button in the **Display Parts/Ports** dialog when you are trying to display all electrical aspect ports of the selected *control Panel* part.



The All By Aspect button usage in the Display Parts/Ports dialog. The illustration displays concepts from SysML Plugin.

### Sample model

The model used in the figures of this page is the **Diagram aspects** sample models that comes with [SysML Plugin](#). To open this sample properly you need to [install the SysML plugin](#) in the MagicDraw and:

- Download [diagram aspects.mdzip](#).
- Find in the modeling tool: <modeling tool installation directory>\samples\SysML\diagram aspects.mdzip.

