

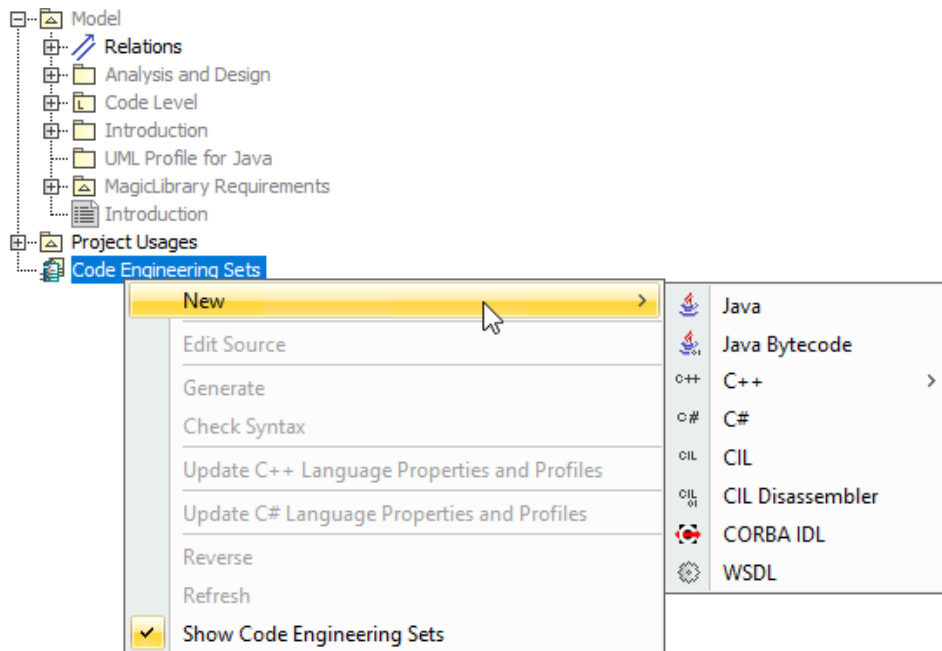
Code Engineering Sets

You can manage code engineering through the **Code Engineering Sets** in the Browser tree. The **Code Engineering Sets** tree contains the list of all sets created in the project as well as instruments for managing those sets.

To add a new set

1. Choose **New** from the **Code Engineering Sets** shortcut menu.
2. Choose the language you want:

- Java
- Java Bytecode
- C++
- C#
- CIL
- CIL Disassembler
- CORBA IDL
- DDL (Cloudscape, DB2, Microsoft Access, Microsoft SQL Server, MySQL, Oracle, Pervasive, Pointbase, PostgreSQL, Sybase) For DDL, the [Cameo Data Modeler plugin](#) is required
- XML Schema, the [Cameo Data Modeler plugin](#) is required
- WSDL

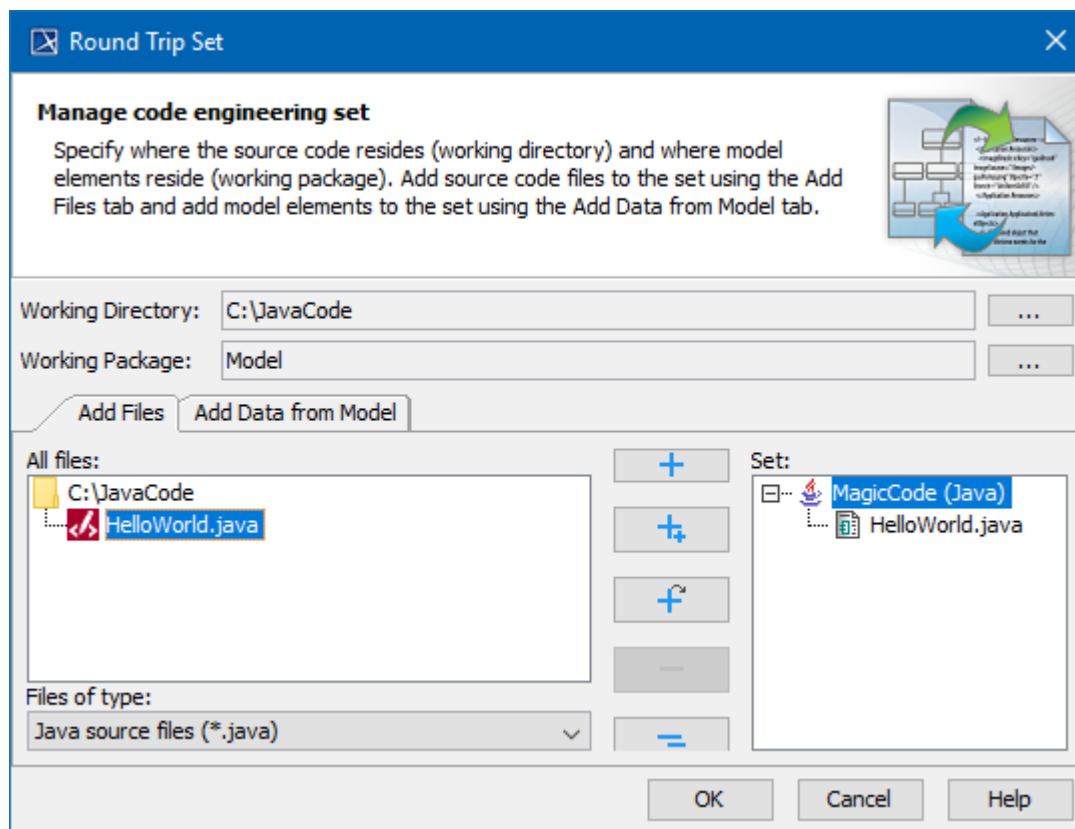


Edit sets in the **Round Trip Set** dialog box.

To open the **Round Trip Set** dialog box

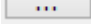
- Right-click the selected set and choose **Edit** from the set shortcut menu.
- Select the set and press Enter.

The **Round Trip Set** dialog box allows you to manage entities to be added/removed to your set.



Round Trip Set dialog box. Add files tab

Specify the **Working Directory** for displaying source files. This option indicates files and required sub-directories where a code generation output goes.

Type a path manually or browse in the directory tree by clicking the  button.

The **Working Package** box allows you to define any package for reverse output or code generation. A model is reversed or code generated from this specified package.



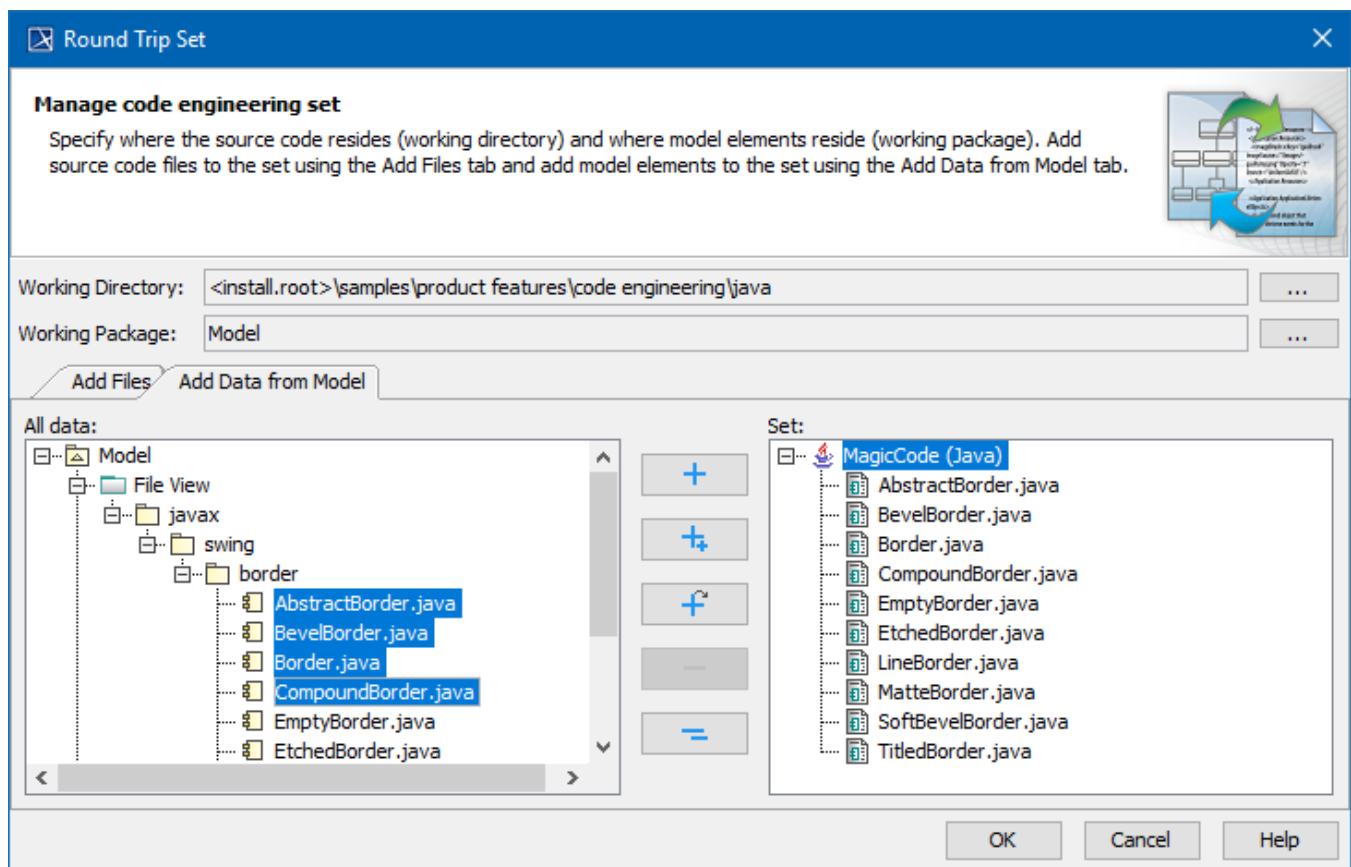
You can only select or change the working package prior to the addition of files from the working directory to the code engineering set.

The **Round Trip Set** dialog box has two tabs: **Add Files** and **Add Data from Model**.

The **Add Files** tab helps you manage the source code files involved in your code engineering set.

Element name	Function
All files	Lists directories with the source files for the set.
Files of type	Contains possible file name extensions for the chosen language.

The **Add Data from Model** tab helps you manage elements located in the UML model.




Round Trip Set dialog box. Add data from model tab.

The **All Data** list contains the hierarchy of UML model packages with model elements (or other packages) inside. Your code engineering set can be combined out of model and code elements. The following buttons are available in the **Round Trip Set** dialog box:

Add	The selected file in the All Files or All Data list is added to the set.
Add All	All files in the opened or selected directory are added to the set.
Add Recursively	All files in the selected directory and its subdirectories are added to the set.
Remove	Removes the selected entity from the set.
Remove All	Removes all entities from the set.

Related Pages:

 Unknown macro: 'list-children'