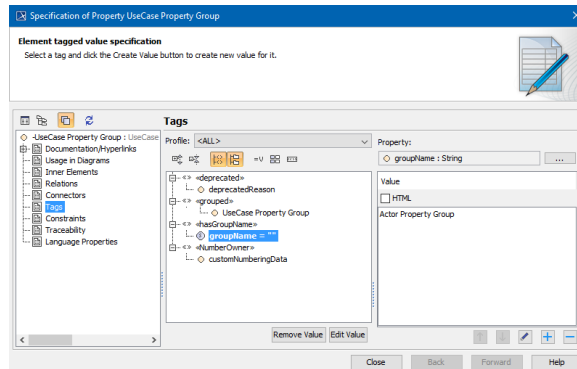


# Grouping Tags inside Stereotype

When a stereotype has many properties, it is very useful to group these properties into named groups. For this purpose, every property could have a tagged value with its group name.

To group tags

1. Open the [Specification window](#) of the stereotype property.
2. Click the **Tags** property group.
3. Select the **groupName** property and assign a value for it:
  - a. Click the **Edit Value** button
  - b. In the **Value** area, type a group name.



4. Repeat these steps for every stereotype property.

## Related Pages

- [Applying Stereotypes](#)
- [Stereotype](#)
- [Tag](#)
- [Specification window](#)