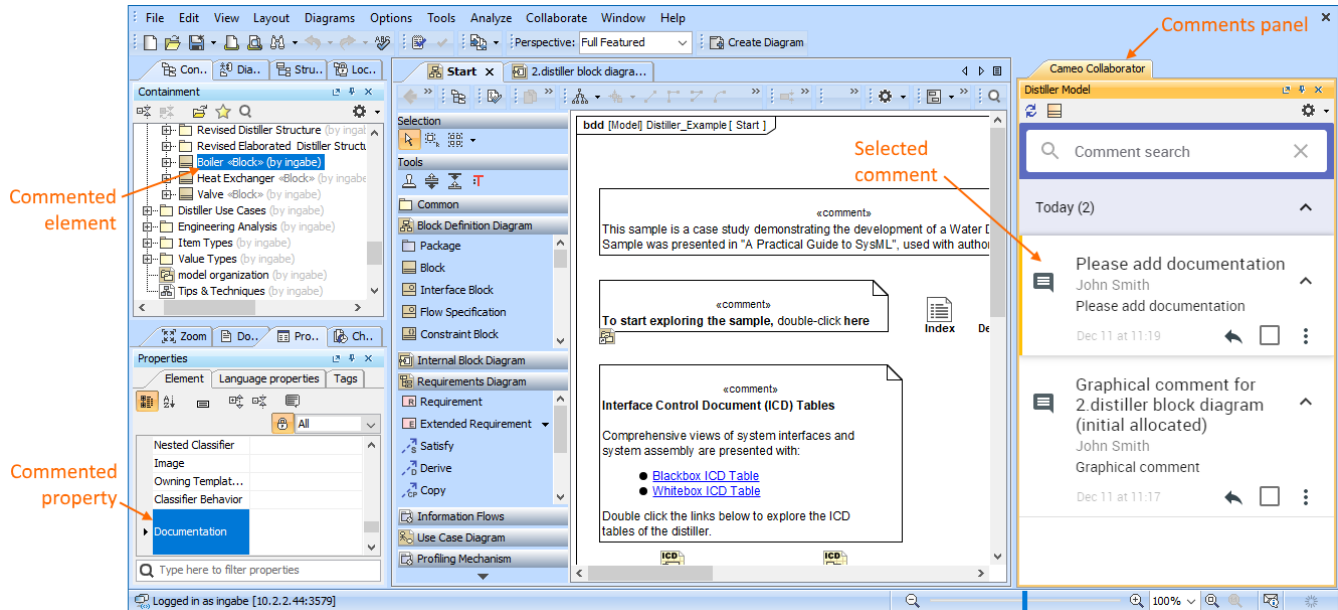


Working with comments in a modeling tool

When you publish a model to Cameo Collaborator for Teamwork Cloud to get feedback, you can address comments straight from the modeling tool. This saves time because you can quickly navigate from comments to commented elements and modify them without leaving the modeling environment.


Once there are comments in a document that you need to respond to, do the following:

1. Open the model that has comments in a modeling tool.
2. [Open the comments panel](#).
3. Select a comment in the comments pane to navigate to the commented element (and its commented properties if any).
4. Modify the model to address comments.
5. Reply to comments to confirm that they have been addressed or ask additional questions (you can also resolve, edit, and delete comments).
6. Save/commit and [publish](#) the updated model.



Use the comments panel in your modeling tool to navigate to the commented element and update it in the model.

To learn more about working with comments in a modeling tool, see the following topics:

 Unknown macro: 'list-children'