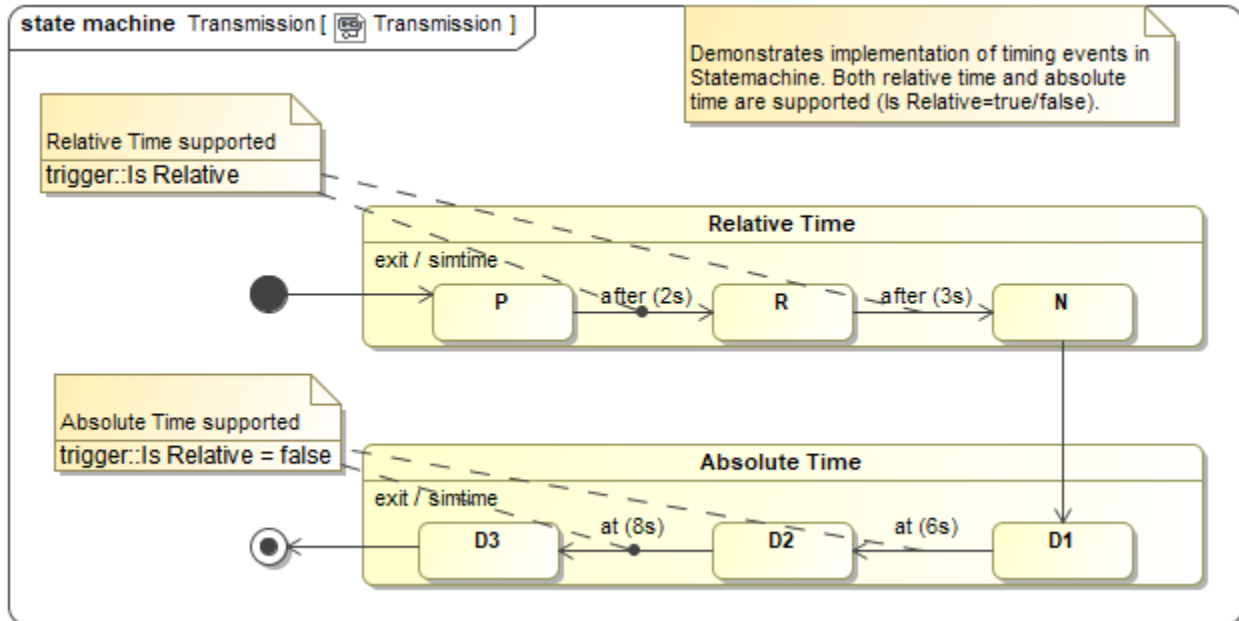


# The test\_timers.mdzip sample

This sample demonstrates the implementation of timing Events on a State Machine diagram. The conditions are as follows

- Transitions with the specified time Events will be automatically triggered after the specified amount of time (in seconds or milliseconds).
- Both relative time and absolute time are supported via **Is Relative** of a Transition.
- Relative time: **Is Relative** = true. Transitions with specified time Events will be automatically triggered after the specified amount of time.
- Absolute time: **Is Relative** = false. The absolute time is at where the TimeEvent occurs from the simulation start.



Relative and absolute time in the test\_timers.mdzip sample.

## Related pages

- [State Machine](#)
- [State Machine diagram](#)