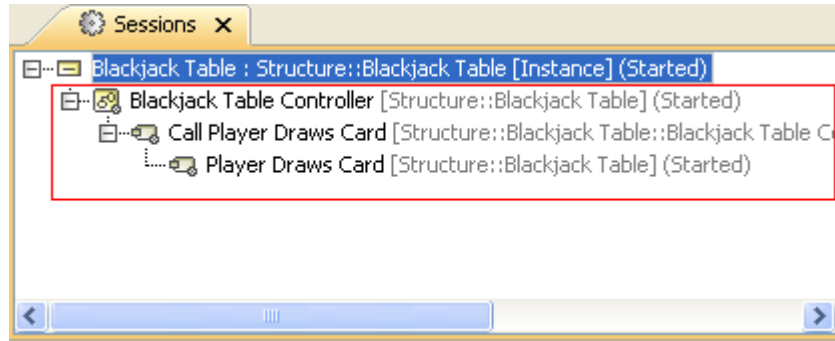


# Opening a diagram of an executing behavior

When you simulate a model, the **Sessions** pane will open to display simulation of each element in the model. During the simulation, if you ever need to see what diagram a Behavior being simulated has, you can double-click the session in the **Sessions** pane of the **Simulation** window. The following figure shows the **Sessions** pane when Cameo Simulation Toolkit is executing the **Blackjack** sample (*Blackjack.mzip*). If you double-click the Behaviors outlined in red, a new tab will open to display the corresponding diagram.



The Sessions tab of the Simulation window.