

Enabling the Document View

The Document View is the mode of a published project that allows you to view it as a continuous document. Essentially, by using the Document View, you can scroll through the entire content of a project view instead of jumping from one navigation tree element to another as in the Model View. The Document View can be enabled for individual views of a project. After selecting a view, you are presented with the document containing information from that view. The sections of the document are numbered hierarchically both in the Navigation pane and the content pane.

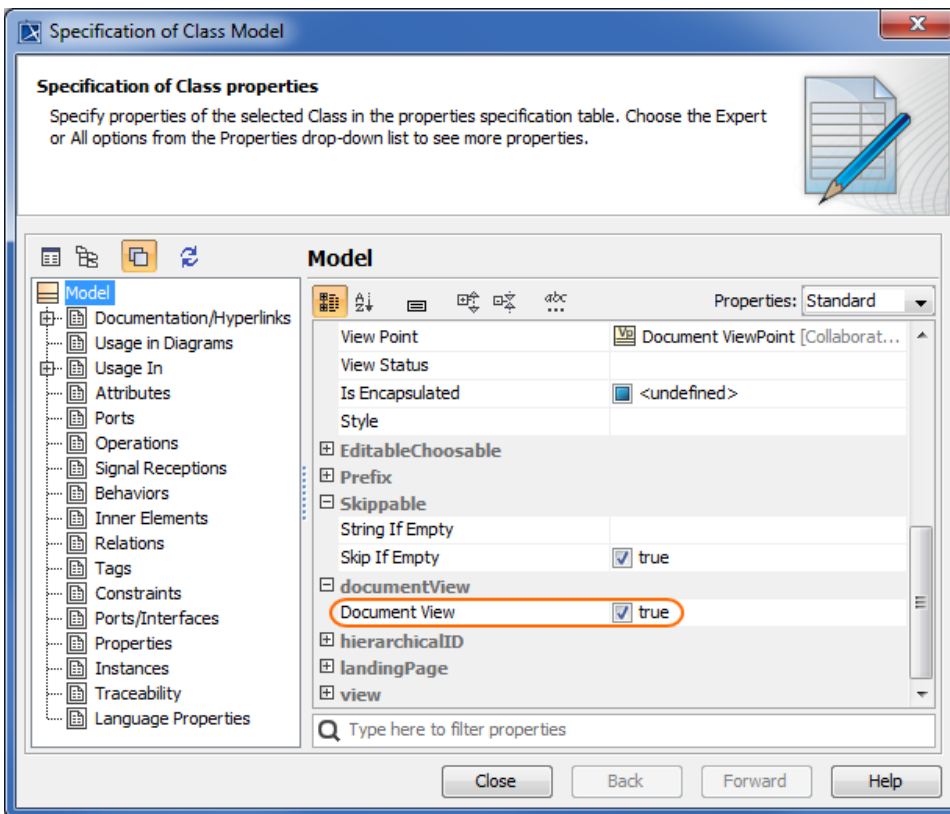
The Document View can be enabled by customizing the template that will be used for publishing or from the title bar of a published project.

To enable the Document View in the template used for publishing

1. Open the View Diagram of the template that you intend to use for publishing.
2. Double-click the element with the «view» stereotype.

In the View Diagram of the template, each element with the «view» stereotype represents a separate navigation tree of a published project. If your template has more than one such element, you can enable the Document View for each of them separately.

3. In the open Specification window, set the **Document View** property as *true*.



The figure shows the Specification window of the element with the «view» stereotype with the Document View enabled.


4. Click the **Close** button.
5. Save the template file.

The Document View is enabled for the selected view of a published project.


Important
The **Document View** property can also be enabled in the Specification window of the element with the «Document» stereotype. Doing this overrides the property values set for individual elements with the «view» stereotype.

To enable the Document View from the title bar of a published project

1. In the app bar of a published model, click ▼ and select the model view for which you want to enable the Document View mode.

2. On the right side of the app bar, click  and select **Document View**.

The Document View is enabled for the selected navigation tree of a published project.

 When the mode is set from the title bar, it's only valid until the refresh of a web portal.

Related pages

- [Predefined and custom model templates](#)
 - [Creating custom model templates](#)
 - [Using a custom template in a model](#)
 - [Customizing the appearance of a project portal](#)
 - [Enabling the Single Tree View](#)