

Publishing from graphical user interface

Publishing a model from the graphical user interface is a quick way to share it on the web with other team members or stakeholders.



Publishing prerequisites

To be able to publish models to Cameo Collaborator for Teamwork Cloud:

- The Cameo Collaborator Publisher plugin must be installed in your modeling tool.

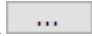
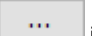


Project permissions

When you publish a new document, it inherits [Teamwork Cloud project permissions](#). When you update a document, project permissions are not affected.

- If you intend to publish a large model, [increase the default JVM heap size](#) of your modeling tool (**Maximum Heap Size** or **Xmx** property).

To publish a model to Cameo Collaborator for TWC

1. Start your modeling tool and open the model you want to publish.
2. In the main menu, select **Tools > Cameo Collaborator > Publish to Teamwork Cloud**.
3. In the **Cameo Collaborator Publisher** dialog, specify the following properties:
 - **Document name** - enter the name of the published document. By default the document name is the same as the model name.
 - **Category name** - select the Teamwork Cloud category where the published document will be stored.
 - **Scope** - click  and select the Package or several Packages containing the data you want to publish.
 - **Template** - select the [template](#) for publishing the model. You can select one of predefined templates or a custom template used in your model. Click  if you want to select a locally stored template or a template stored in Teamwork Cloud.



Updating projects

~~If you update a published model, specify the same template that you used before. Otherwise, the navigation between comments and commented items will be corrupted. To restore corrupted navigation, update the document again using the initial template.~~

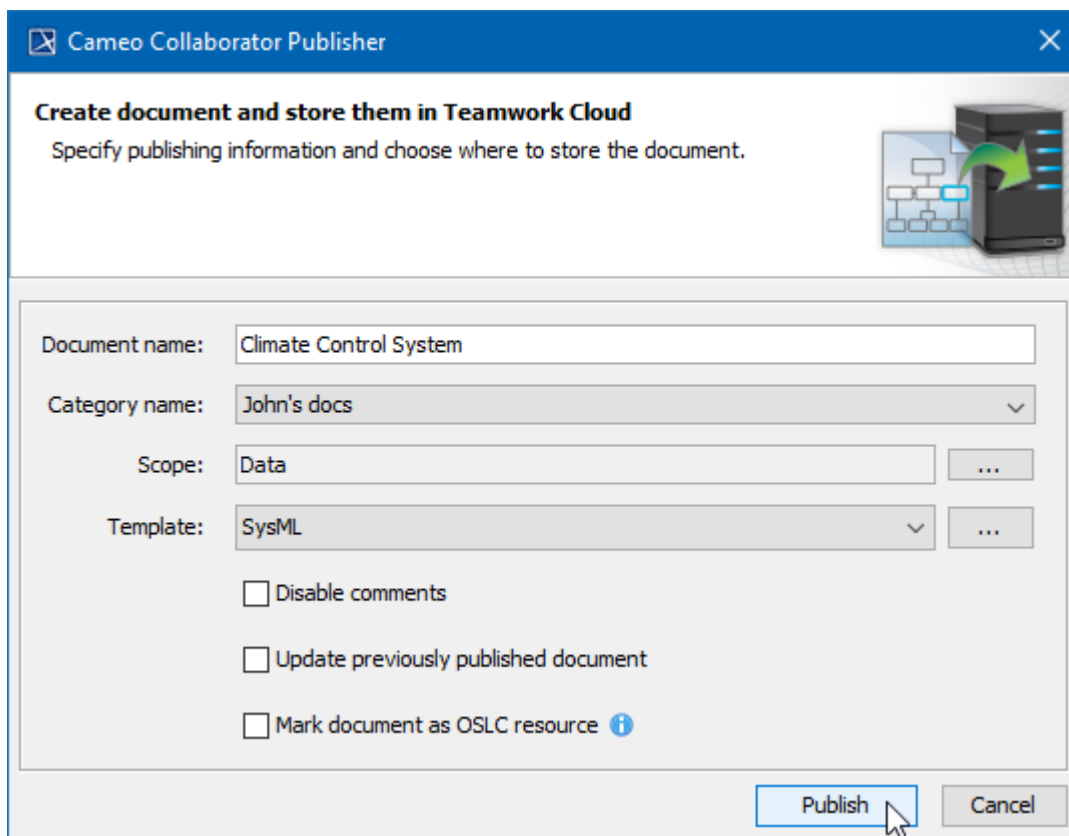
4. In the same dialog, do the following (optional):
 - Select the **Disable comments** check box if you do not want reviewers to comment in the published document.
 - Select the **Update previously published project** check box if you want the current model to replace a previously published model with the same name. If you select this check box when publishing a model for the first time, the model will be published as new.



Projects reverted to an earlier version

~~When publishing, the selected template is automatically used in your model and then committed to Teamwork Cloud. If you update a model that has been reverted to an earlier version (without the template used in it), you will corrupt the navigation between existing~~

5. Click the **Publish** button.
~~comments and commented items. Afterwards the navigation cannot be restored.~~



The **Cameo Collaborator Publisher** dialog with specified publishing properties.

Wait until you get the message that the document is successfully published, as publishing a large model may take some time.



Getting document URL

The message that a document is successfully published contains links allowing you to copy the document URL or open it. For the links to work, in the main menu, select **Options > Environment**, select **Cameo Collaborator** option group on the left side of the **Environment Options** dialog, and specify

the Cameo Collaborator URL.

- [Publishing models to Cameo Collaborator for TWC](#)
 - [Publishing from command-line interface](#)