

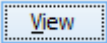
Working with DHLink Summary reports

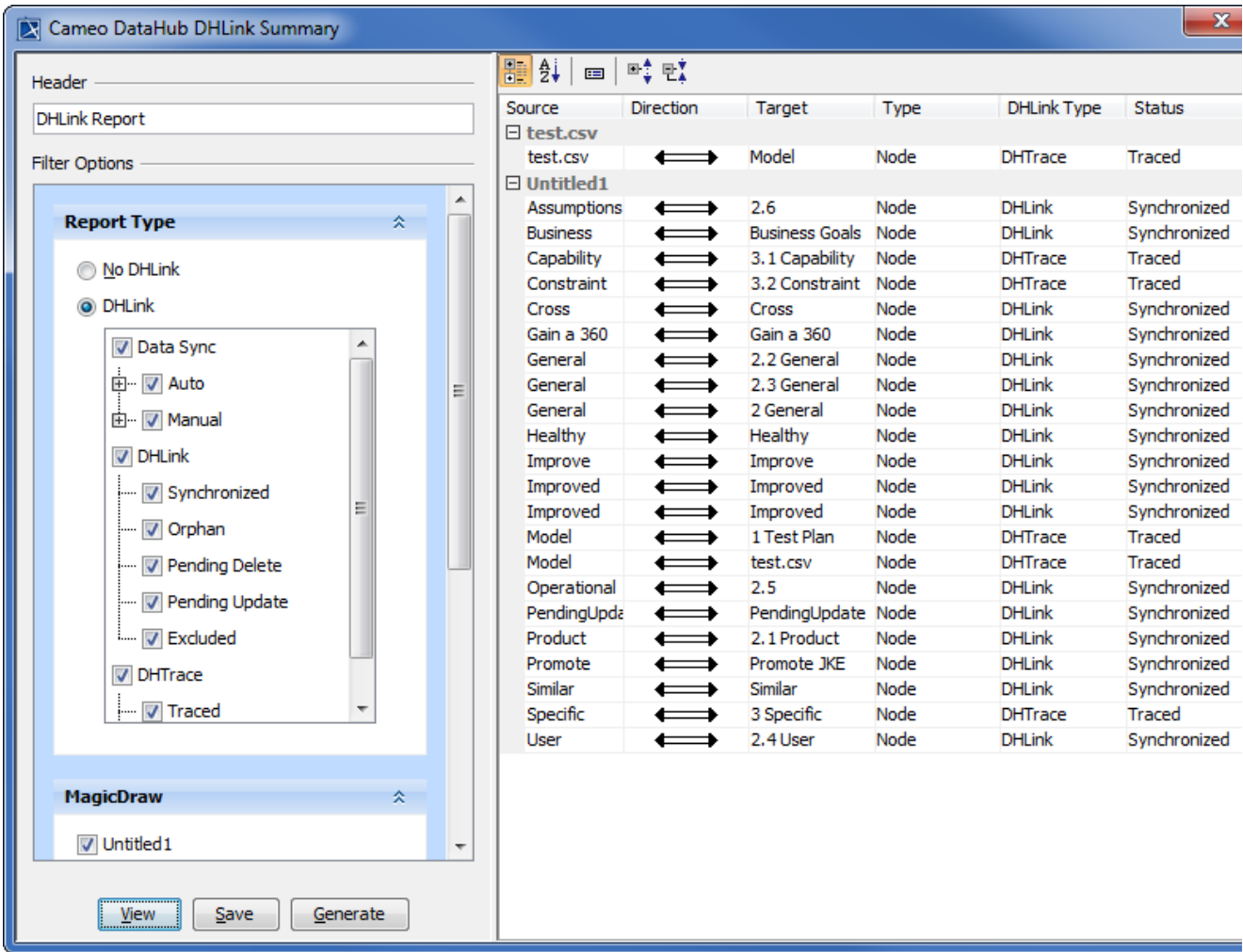
The **DHLink Summary** dialog allows you to preview specific relation types and their scope and produce a report containing the selected relations in the HTML format. This report is called a DHLink Summary report.

The functions of the **DHLink Summary** dialog are as follows

- Provides the options to extract specific relation types and customize their scope from a project and to preview them.
- Saves the extracted relation types in the customized scope to be included in a generated report.
- Generates DHLink Summary reports in HTML containing the selected relation types.

To preview relations in the **DHLink Summary** dialog

1. On the main menu, click **Tools > DataHub > DHLink Summary**. The **Cameo DataHub DHLink Summary** dialog opens.
2. Select a **Report Type** and a scope of **Data Source**.
3. Click  to preview the selected data.



To save the relations to be included in DHLink summary and create a DHLink Summary report

1. On the main menu, click **Tools > DataHub > DHLink Summary**. The **Cameo DataHub DHLink Summary** dialog opens.
2. Select a **Report Type** and a scope of **Data Source**.



Tip

If you want to include **Traced** and **Suspect** relations in the summary, select the



DHTTrace

check box.

Save

Generate

3. Click to save the selected data or to create a DHLink Summary report in HTML.

DHLink Type

- DHLink [Excluded, Option, Pending Delete, Pending Update, Synchronized]
- DHTTrace [Suspect, Traced]
- Sync Auto [Option, Pending Delete, Pending Update, Synchronized]
- Sync Manual [Option, Pending Delete, Pending Update, Synchronized]

Drivers

- IBM Rational DOORS [DOORS Database]

Source Element	Related Element	Type	DHLink Type	Status	Data Source
DOORS Database					
1 Introduction Edit Text (DOORS Database: Docs Test Project Requirements)	Introduction Edit Text (docs Requirements)	Note	DHLink (Two-way)	Synchronized	Unlabeled1
1.1 Definitions Acronyms, and Abbreviations edit edit (DOORS Database: Docs Test Project Requirements)	Definitions Acronyms, and Abbreviations edit edit (docs Requirements: Unlabeled edit Text)	Note	DHLink (Two-way)	Synchronized	Unlabeled1
1.1.1 Purpose of the Document (DOORS Database: Docs Test Project Requirements)	Purpose of the Document (docs Requirements: Unlabeled edit Text: Definitions Acronyms, and Abbreviations edit)	Note	DHLink (Two-way)	Synchronized	Unlabeled1
1.2 Overview of the Document Edit (DOORS Database: Docs Test Project Requirements)	Overview of the Document Edit (docs Requirements: Unlabeled edit Text)	Note	DHLink (Two-way)	Synchronized	Unlabeled1
1.2.1 Scope of the Software (DOORS Database: Docs Test Project Requirements)	Scope of the Software (docs Requirements: Unlabeled edit Text: Overview of the Document Edit)	Note	DHLink (Two-way)	Synchronized	Unlabeled1
2 General Description (DOORS Database: Docs Test Project Requirements)	General Description (docs Requirements)	Note	DHLink (Two-way)	Synchronized	Unlabeled1
2.1 Product Perspective (DOORS Database: Docs Test Project Requirements)	Product Perspective (docs Requirements: General Description)	Note	DHLink (Two-way)	Synchronized	Unlabeled1
2.2 General Capabilities (DOORS Database: Docs Test Project Requirements)	General Capabilities (docs Requirements: General Description)	Note	DHLink (Two-way)	Synchronized	Unlabeled1
2.3 General Constraints (DOORS Database: Docs Test Project Requirements)	General Constraints (docs Requirements: General Description)	Note	DHLink (Two-way)	Synchronized	Unlabeled1
2.4 User Characteristics (DOORS Database: Docs Test Project Requirements)	User Characteristics (docs Requirements: General Description)	Note	DHLink (Two-way)	Synchronized	Unlabeled1
2.5 Operational Environment (DOORS Database: Docs Test Project Requirements)	Operational Environment (docs Requirements: General Description)	Note	DHLink (Two-way)	Synchronized	Unlabeled1
2.6 Assumptions and Dependencies (DOORS Database: Docs Test Project Requirements)	Assumptions and Dependencies (docs Requirements: General Description)	Note	DHLink (Two-way)	Synchronized	Unlabeled1
3 Specific requirements (DOORS Database: Docs Test Project Requirements)	Specific requirements (docs Requirements)	Note	DHLink (Two-way)	Synchronized	Unlabeled1
3.1 Capacity Requirements (DOORS Database: Docs Test Project Requirements)	Capacity Requirements (docs Requirements: Specific requirements)	Note	DHLink (Two-way)	Synchronized	Unlabeled1
3.2 Constraint Requirements (DOORS Database: Docs Test Project Requirements)	Constraint Requirements (docs Requirements: Specific requirements)	Note	DHLink (Two-way)	Synchronized	Unlabeled1
Requirements (DOORS Database: Docs Test Project)	Requirements (docs)	Note	DHLink (Two-way)	Synchronized	Unlabeled1

Related pages

- Adding another attribute into the report template