

Customizing or creating data mapping rules

On this page

- [Specifying mapping policy](#)
- [Customizing or creating data mapping rules](#)

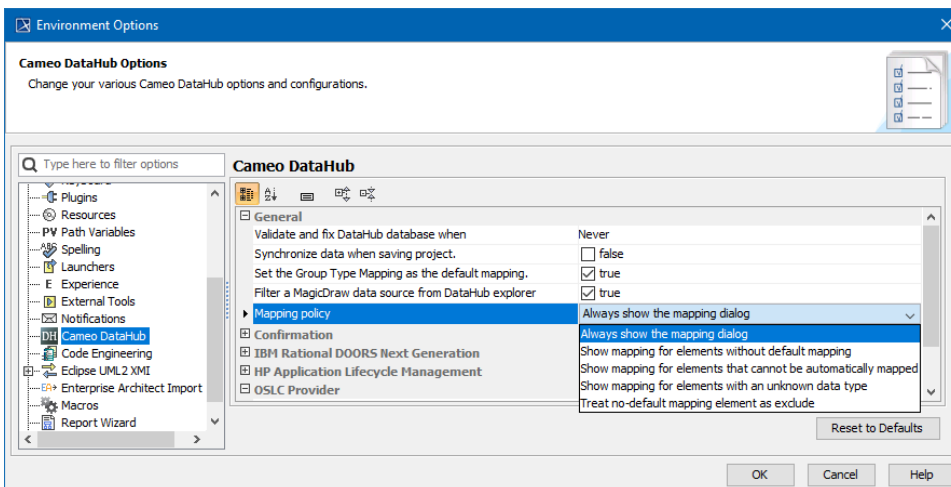
When [importing](#) data to a modeling tool, or [exporting](#) it to the Teamcenter repository, Teamcenter items are automatically converted to SysML elements or vice versa. Usually, data is converted by using [predefined data mapping rules](#), but they can be customized if needed. You can customize existing data mapping rules or create new ones during data import and export.

Specifying mapping policy

You can customize data mapping rules in the **Copy Data with Sync** dialog when importing or exporting data. The **Copy Data with Sync** dialog opens by default during every import/export if there are any unmapped data types in the import/export scope. Before starting mapping customization, make sure that the **Copy Data with Sync** dialog is opened during import/export by specifying the desired mapping policy as described below.

To specify mapping policy

1. In the main menu, select **Options > Environment**. The **Environment Options** dialog opens.
2. Select **Cameo DataHub** in the option group list on the left side of the dialog.
3. In the option specification area on the right side of the dialog, specify the desired value of the Mapping policy option.



4. Click **OK**, to close the **Environment Options** dialog.



Recommended mapping policy

- If you want to specify custom mapping rules for both mapped and unmapped data types, select **Always show the mapping dialog**.
- If you want to specify mapping rules only for unmapped data types, select **Show mapping for elements with an unknown data type**.

Customizing or creating data mapping rules

When importing or exporting data, the **Copy Data with Sync** dialog allows you to customize existing data type mapping rules and map data types that are not yet mapped. In addition, you can customize the default mapping on a single property level.

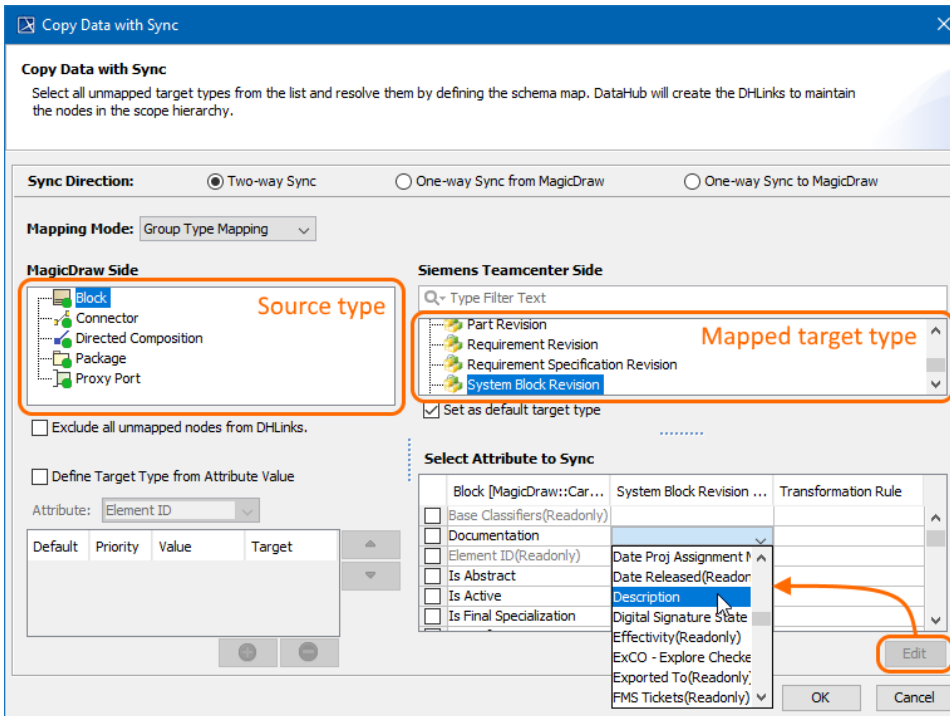
To customize/create data mapping rules

1. Start your modeling tool and open the project for which you want to define custom mapping rules.
2. [Connect to the Teamcenter server](#).
3. Start the importing or exporting procedure. The **Copy Data with Sync** dialog opens depending on the mapping policy you specified in the previous procedure.



Important

You can customize mapping rules only for the set of elements that you are importing/exporting.



4. In the source type area on the left side of the dialog, select the data type you want to map. Unmapped element/item types are marked with a red circle.
5. In the target type area on the right side of the dialog, select the data type to which you want to map the selected source type.
6. Optionally complete the following steps:
 - a. To map the properties of the selected data types, click the **Edit** button and select the target type property for the desired source type property as shown above.
 - b. Select the **Exclude all unmapped nodes from DHLinks** check box, to exclude any unmapped data from the current import/export scope.
7. Click **OK**.



Completing import/export

To finish importing or exporting data, you have to map all unmapped data types or select the **Exclude all unmapped nodes from DHLinks** check box.

Related pages

- [Importing data](#)
- [Exporting data](#)
- [Default data mapping](#)
- [Mapping element properties](#)