

# Importing data through a class mapping

You can also import model elements through a class mapping. A class mapping contains properties of a schema class and a target element that you have mapped together. The type of the target element that you selected in the class mapping determines how the plugin imports and creates the model elements. If the target element is a user model, the plugin will import data as instance specifications of the user model. However, if the target type is a element in *UML* or a *SysML* profile, the plugin will import data as *UML* or *SysML* element type respectively.

Importing data through a class mapping requires the number and the name of columns in the file to be the same as those in the selected class mapping.

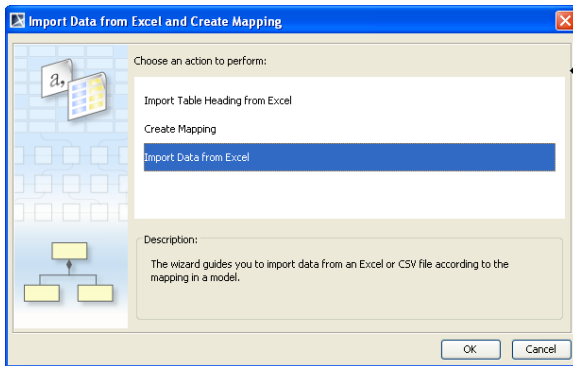
The **Import Data from Excel** menu in the **Import Data from Excel and Create Mapping** dialog, see figure below, opens the wizard that allows you to import data according to the class mapping you created. This menu is also useful if you want to import data from an Excel or CSV file as instance specifications of the schema class you have imported. See section [Importing Instance Specifications after Creating a Schema Class](#) for details on importing instance specifications using the **Import Data from Excel** menu.

You can open the wizard to import elements from a class mapping through either (i) The main menu or (ii) The context menu. If you want to import elements by using the main menu, you need to click **File > Import From > Excel/CSV File > Import Data from Excel**. If you use the context menu, you can right-click a class mapping in the Containment tree in MagicDraw and select **Tools > Import Data from Excel**.

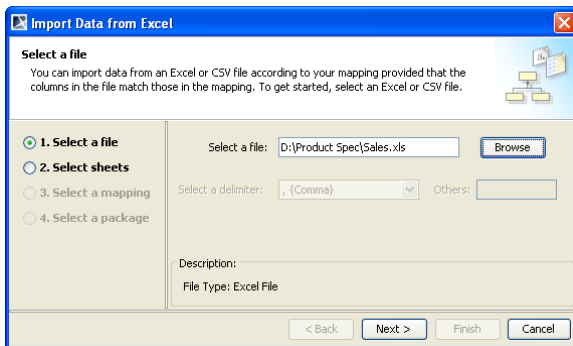
Either method opens the **Import Data from Excel** wizard. The only difference is that the context menu will choose the class mapping, which you have already selected in the Containment tree, in the **Select a mapping** option page by default. However, you can change the default class mapping in the wizard to another one.

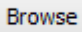
(ii) To import data according to a class mapping through the main menu

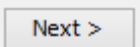
1. Click **File** on the MagicDraw main menu and click **Import From > Excel/CSV File**. The **Import Data from Excel and Create Mapping** dialog will open, as shown in the figure below.

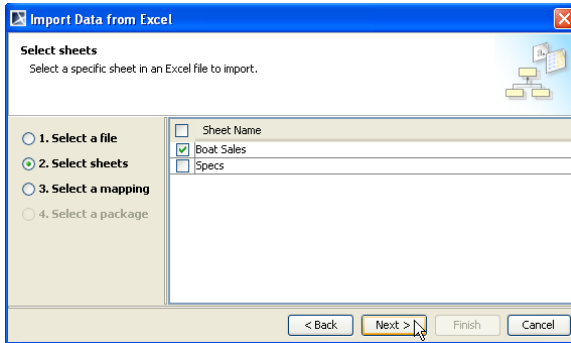


2. Click the **Import Data from Excel** menu and click **OK**. The **Import Data from Excel** wizard will open, as shown in the figure below.



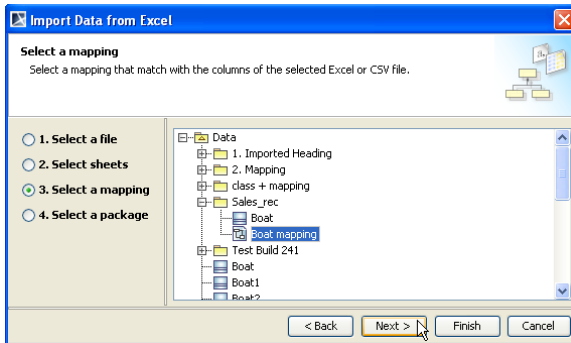
3. Click  to find an Excel or CSV file.
4. Select a file and click **Open**.

5. Click . If the file you have selected in step 3 above is an Excel file that has data in more than one sheet contain data, the **Select sheets** option will be enabled, see figure below. Otherwise, skip step 6.



6. Select one or more sheets in the Excel file whose data you are going to import and click

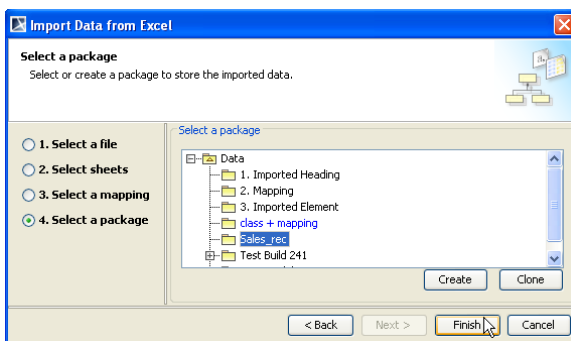
. The **Select a mapping** option will open, see figure below.



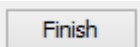
7. Select a class mapping to which you want to import the elements.

8. Click either (i)  to import the elements into the package where the class mapping

is located or (ii)  to select a new package using the **Select a package** option, as shown in the figure below.

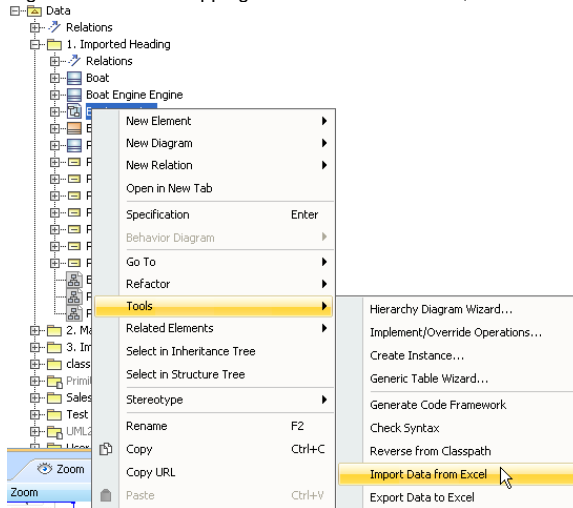


9. Select, create, or clone a package to store the to-be-imported elements from the treeview.

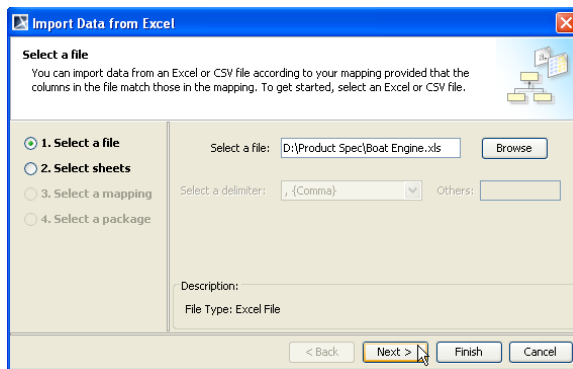
10. Click .

To import data according to a class mapping through the context menu

1. Right-click a class mapping in the Containment tree, as shown in the figure below.



2. Select **Tools > Import Data from Excel**. The **Select a file** page will open, as shown in the figure below.



3. You can click:

- (i) **Browse** to find a file and click **Finish**.
- (ii) **Finish** and skip the following steps.



If you click **Finish** at this point, the wizard will:

- Import data from the file and the sheet of the schema class of the selected class mapping.
- Save imported data in the package where the class mapping is located.

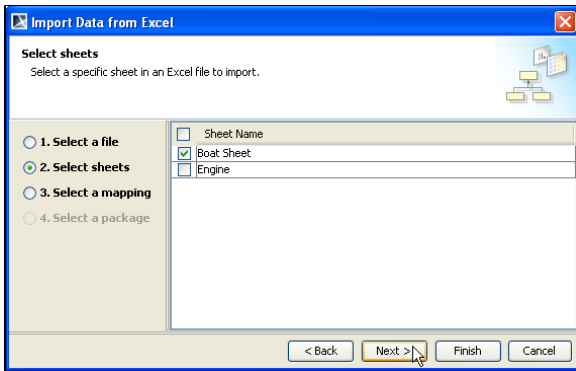
**Next >**


- (iii) to select the sheets of using the **Select sheets** option, see the first figure below. If you are importing a CSV file, the wizard will skip the **Select sheets** page and open the **Select a mapping** page, see the second figure below.

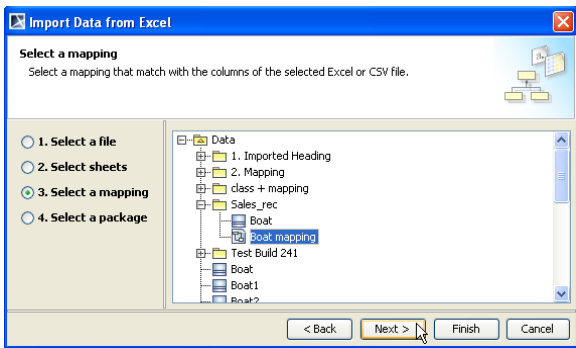


The **Select sheets** option page will not open if:

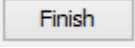
- a selected Excel file has only one sheet.
- a selected Excel file has several sheets but only one sheet contains data.
- a CSV file is selected.

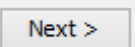


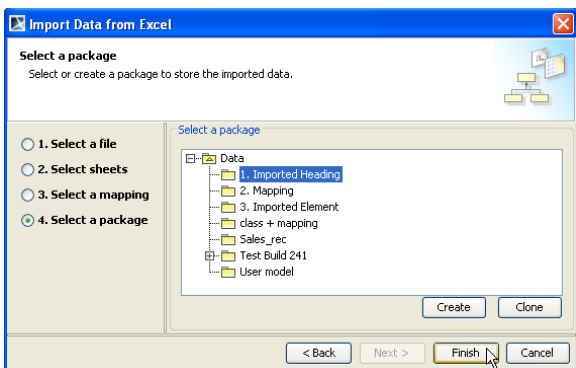
4. Select one or more sheets in the Excel file with the data to import and click . The class mapping you have selected in the Containment tree will open in the **Select a mapping** option page, see figure below.



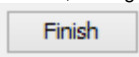
5. You can select another class mapping from the treeview.

6. Click either (i)  to import the element into the package where the class mapping is

located, or (ii)  to select a package to store imported elements through the **Select a package** option page, as shown in the figure below.



7. Select, create, or clone a package to store the to-be-imported elements or instance specifications from the treeview, see figure above.

8. Click .