


Using Alf for Activity Edge guards

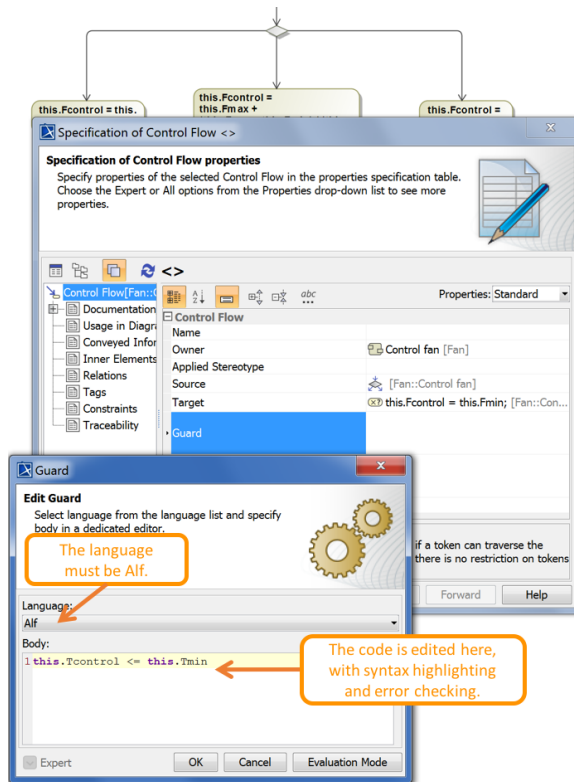
You can use an Alf expression the guard for an Activity Edge (Object Flow or Control Flow) in an Activity. However, in this case, it is generally easier to create the Expression directly into the Specification window for the Activity Edge, and then subsequently edit it using the Alf editor.

To create an Alf guard Expression

1. Open the Specification window for the Activity Edge on an Activity diagram.
2. Click on the **Guard** property and then click on the  button at the left of the field.
3. In the Edit Guard window, select Alf for **Language** (you may need to scroll up in the menu) and enter the Alf code for the expression into the **Body** field.



Note that the text entered must be for an *expression*, not a statement. Therefore, it must *not* have a semicolon at the end. The expression can access attribute values of the context Classifier of the Activity containing its Activity Edge (using Alf *this* expressions) or the decision input value for the Decision Node (see [Accessing data in Activity Edge guards](#)).



To make Alf the default language for Opaque Expressions

- a. Select **Options > Environment**.
- b. From the **General** options, select **Editing**.
- c. For the **Opaque Expression Default Language** option, type *Alf* (with exactly that spelling and capitalization). Click **OK**.

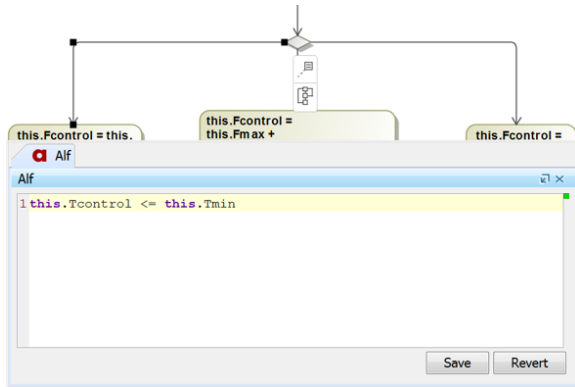
4. Click **OK** to close the Edit Guard window.
5. Close the Specification window.

To edit an Alf guard Expression using the Alf editor

Related pages


- [Accessing data in Activity Edge guards](#)
- [The Alf editor](#)
- [The Alf compiler](#)

-
1. Select the Activity Edge and open the Alf editor window (select **Windows > Alf**), if it isn't already open.
 2. Edit the guard Expression and click **Save** to save and compile it.



You also can edit the Alf code in the Edit Guard window just as in the Alf editor window. However, instead of **Save** and **Revert** buttons, this window has **OK** and **Cancel** buttons, either of which will close it. If you press **OK**, then the Alf text is saved, and, if it has no errors, compiled. If you press **Cancel**, the Alf text is *not* saved.

To edit an Alf guard Expression in the Edit Guard window

1. Open the Specification window for the Activity Edge on an Activity Diagram.
2. Click on the **Guard** property and then click on the  button at the left of the field
3. Edit the Alf expression as above.