

Pre-commit validation

On this page

- [Required options for pre-commit validation](#)
- [Customize validation options](#)
- [Warning and error dialogs](#)
- [Pre-commit Validation Results panel](#)
 - [Toolbar](#)
 - [Validation results area](#)

The pre-commit validation runs just before a committing server project to the Teamwork Cloud. This validation protects against violations that are not allowed according to the preset validation suites. You will receive a notification prior to commit completion if the validation fails, according to setup. The notifications can be either a warning (with an ability to continue the commit) or error messages (to disallow commit). Pre-commit validation does not run validations on auto-commits (e.g. when upgrading profiles, on element move to the used project, update from a local file and other).

Required options for pre-commit validation

To enable pre-commit validation, you must set up at least two project options:

- [Validation Suites](#)
- [Minimal Severity That Prohibits Commit](#)

or

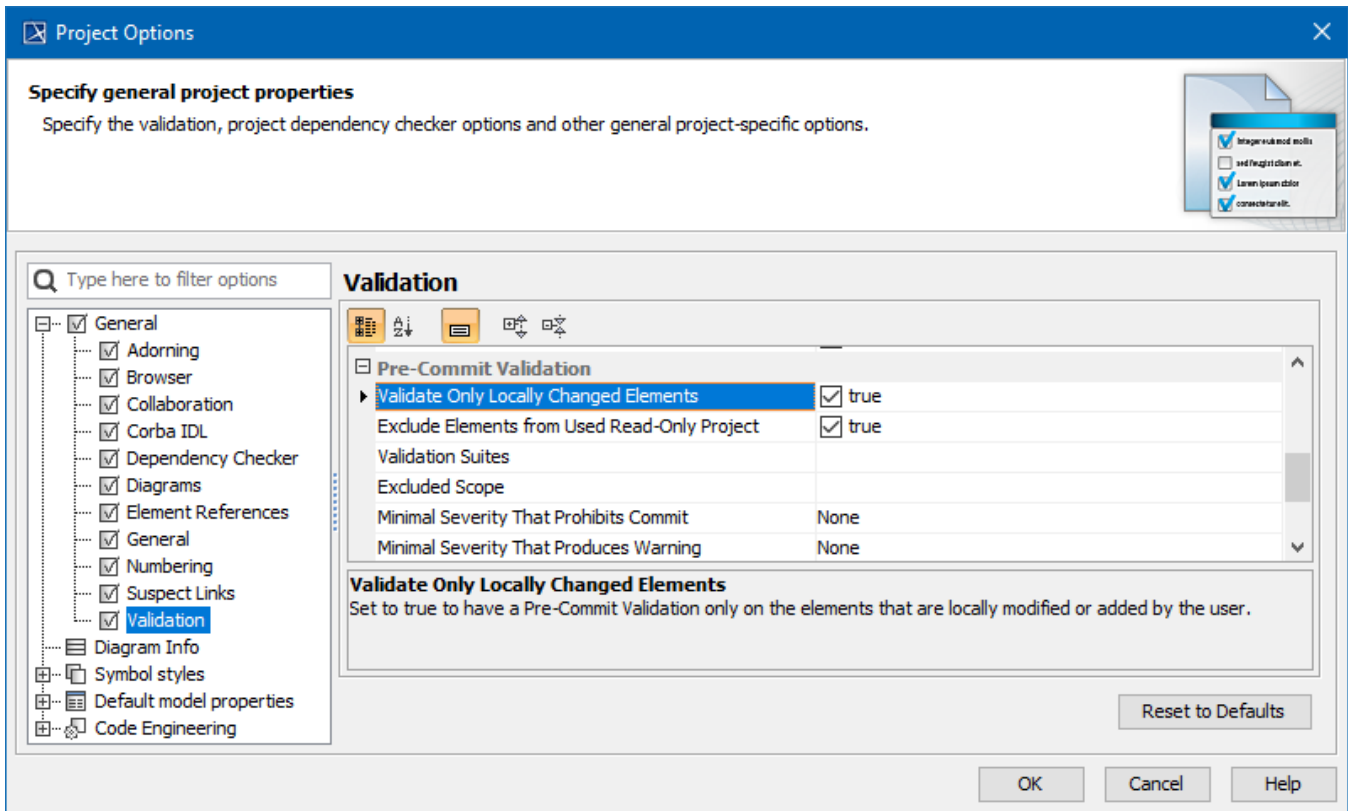
- [Validation Suites](#)
- [Minimal Severity That Produces Warning](#)

Customize validation options











Customize validation options in the **Project Options** dialog.

To open the **Validation Options**

-
1. Open the **Project Options** dialog in one of the following ways:
 - On the main menu, select **Analyze > Validation > Validation Options**.
 - On the main menu, select **Options > Project**. In the [Project Options](#) dialog, select **General > Validation**.
 2. Specify the options you need in the **Validation** area. [How to use the Project Options dialog >>](#)
 3. Click **OK**.

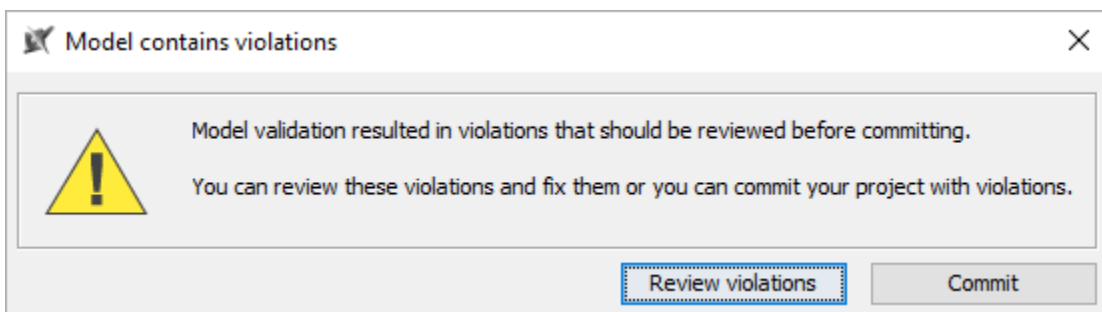


| Option | Values | Description |
|--|-------------------|---|
| Validate Only Locally Changed Elements | True or False | When set to <i>true</i> , pre-commit validation will only run on the elements that are locally modified or added by the user. |
| Exclude Elements from Used Read-Only Project | True or False | When set to <i>true</i> , it will exclude projects that are used in read-only mode and elements that exist in these projects. |
| Validation Suites | Validation suites | Specify a validation suites list that must be run before committing changes to a server. |
| Excluded scope | Excluded scope | Specify the validation scope to be excluded from the rules that belong to pre-commit validation suites. Elements in the selected scope will not be validated before committing changes to a server. |

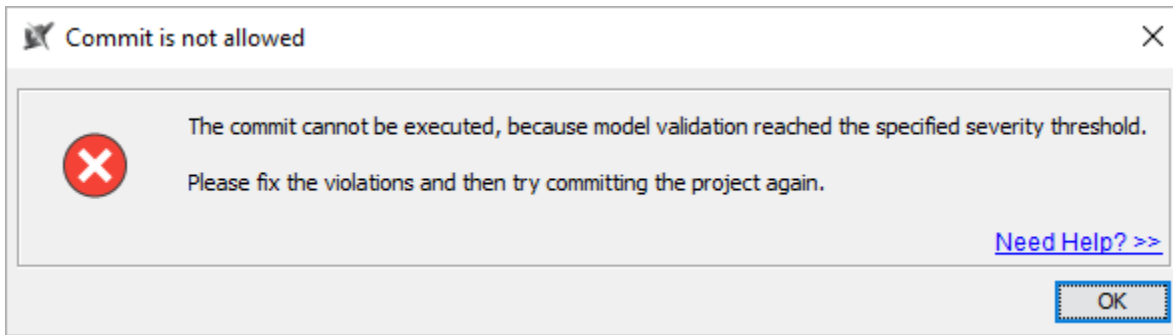
| | | |
|--|--|---|
| Minimal Severity That Prohibits Commit | <ul style="list-style-type: none"> • None •  - debug. •  - info. •  - warning. •  - error. •  - fatal. | Specify the minimal severity violation severity threshold that prohibits commit. Pre-commit validation will be performed before executing commit to a server. It will validate the model and check if there are validation results with reached or exceeded selected severity levels. Commit will be prohibited until these violations are fixed. |
| Minimal Severity That Produces Warning | <ul style="list-style-type: none"> • None •  - debug. •  - info. •  - warning. •  - error. •  - fatal. | Specify the minimal severity threshold that produces a warning. Pre-commit validation will be performed before executing commit to a server. It will validate the model and check if there are validation results with reached or exceeded selected severity level. If these violations are found, a warning dialog will appear, allowing you either to review warnings or to execute project commit. |

Warning and error dialogs

- If a warning appears, you are allowed to choose whether to review violations or to continue to commit. If you choose to review violations, the pre-commit validation results panel will be open; otherwise, your project will be committed without showing violations.



- If there is an error, you are not allowed to choose. You will get a list of the validation results.



When the pre-commit validation is supposed to show a warning and an error at the same time, the tool will only show an error due to its behavior being more restricted.

Pre-commit Validation Results panel

The **Pre-commit Validation Results** panel opens after you either get an [error message](#) or you select to review violations in the [warning message](#).

It is impossible to ignore Pre-Commit Validation results.

Toolbar

Validation results area

| Element | Severity | Abbrevi... | Message |
|---|----------|------------|---|
| Relations Ownership | | | |
| Association:A_primaryQuantityKind_adop... [info] | info | RelOwn | End element(s) of Association A_primaryQuantityKind_adop... Relationship is not in the same owner as it's end elements. |
| Association:A_quantityKind_scale[quantityKind:QuantityKin... [info] | info | RelOwn | End element(s) of Association A_quantityKind_scale are in Package UnitAndQuantityKind. Relationship is not in the same owner as it's end elements. |
| Extension:E_extension_Conform_base_Dependency[base_... [info] | info | RelOwn | End element(s) of Extension E_extension_Conform_base_Dependency are in Package ModelElements. Relationship is not in the same owner as it's end elements. |
| Extension:E_extension_View_base_Package[base_Package... [info] | info | RelOwn | End element(s) of Extension E_extension_View_base_Package are in Package ModelElements. Relationship is not in the same owner as it's end elements. |
| Spelling | | | |
| A Blackbox ICD Tablerepresents all external Ports ... [Black... | error | SpellError | Body: Spelling error found |
| A collection of elements defined for the purpose o... [BuildC... | error | SpellError | Body: Spelling error found |
| A combined direction of all owned and inherited fl... [direction] | error | SpellError | Body: Spelling error found |

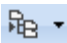






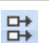



Summary of severity area

4205 Errors, 275 Warnings, 14116 Info

Toolbar

The toolbar allows you to manage the validation results. All buttons are described in the following table

| Button icon | Button name | Description |
|-------------|--------------|--|
| | Expand All | Click to recursively expand all the elements in the validation results area. |
| | Collapse All | Click to recursively collapse all the elements in the validation results area. |

| | | |
|---|---------------------------------------|--|
|  | Navigate to Validated Object (Alt+B) | <p>Click the button to select the element in the Containment tree.</p> <p>Click the arrow next to the button to open the menu of the following navigation commands:</p> <ul style="list-style-type: none">  Open Specification - opens the Specification window of the selected element in the validation results area.  Go To - opens a submenu whose commands allow you to track and navigate to the elements.  Select Rule in The Containment Tree - selects the failed validation rule in the Containment tree of the selected element in the validation results area.  Add to Search Results - selects an element in the Search Results tree.  Open Project Usage Map - opens the Project Usage Map. This command is available only for Teamwork Server projects. |
|  | Solve | Click to open the list of available commands to solve a selected element violation in the validation results area. |
|  | Display the full path of the elements | Click to show the full path of all elements in the validation results area. |
|  | Run validation with current settings | Click to run the validation with the current settings. |
|  | Validation Options | Click to open the Project Options dialog with the Validation node open. |
|  | Export | Click to export the list of validation results either to an .html or .csv file. |

Validation results area

The validation results area provides a list of violated elements. This area contains the following columns:

- **Element** - elements that violate the validation rule.
- **Severity** - severity level of the validation rule.
- **Abbreviation** - a short word, phrase, or acronym of the validation rule used for sorting/filtering.
- **Message** - description of the invalid situation when a validation rule fails.