


Migrating data and upgrading TWCloud

This page includes the following:


- [Migrate the Cassandra database from Teamwork Cloud 18.x to version 19.0 SP1](#)
- [Migrate the UML meta-model in the database from UML version 2.5 to version 2.5.1](#)
- [Upgrade to TWCloud 19.0 SP1](#)
- [Update your server projects](#)

Migrating Teamwork Cloud from an 18.x version to 19.0 SP1 is performed in two stages, migrating a database to version 19.0 SP1 using the database schema [migration tool](#) and migrating the UML Specification to version 2.5.1 using the UML migration tool.

After successfully migrating the database and UML Specification, you must [update the projects to enable project editing](#). [Upgrading your CEDW 18.3, TWCloud 18.4 or 18.5](#) to TWCloud 19.0 SP1 is also possible without migrating your database. If you do not need to keep your existing data, you can simply skip the migration steps and delete your database folder.


**Warning: Check the schema version before upgrading TWCloud**
Before upgrading your TWCloud, check if the schema of your current TWCloud is the same as that of TWCloud you are going to upgrade to. If both schema versions match, you can upgrade your TWCloud without the need to migrate your data. Otherwise, you need to [migrate your data](#).


TWCloud version	Schema version	USE
-----------------	----------------	-----

**This section is only applicable if you are upgrading from a version lower than 19.0**

18.4	8	
------	---	--

This section outlines the steps to migrate your data from Teamwork Cloud 18.3-18.5 . If you already have existing data created in CEDW 18.3, TWCloud 18.4 or 18.5, you must migrate the data to a 19.0 compatible format before using Teamwork Cloud (TWCloud) 19.0 SP1. For each schema version change, you will have to use the relevant migration tool to migrate the schema. If upgrading from Schema version 12 (18.5 series), use the [19.0 migration tool](#) to accomplish this. If migrating from Schema version 8, you will first have to use the [18.5 migration tool](#).

**Before migrating the database, perform a cold backup per the procedure [here](#). The [migration tool](#) is a .zip file that should be on the same download page as the TWCloud installer file. If your database has already been migrated, you should see a message informing you that the database is up to date.**

**Warning**
If you start TWCloud 19.0 SP1 with the Cassandra database created in any previous versions of the server without migrating your data first, the TWCloud server will fail to start, and an error message similar to the following will appear in server.log:

18.5 SP3	12	
----------	----	--

The following instructions show how to migrate data from TWCloud 18.5 to TWCloud 19.0 SP1.

18.5 SP4	12	
----------	----	--

To migrate data from 18.5 to TWCloud 19.0 SP1

19.0 GA	20	
---------	----	--

1. Stop TWCloud if it is running.
2. Confirm that Cassandra is up and running.
3. Run the command `nodetool drain`, to flush all memtables from the node to the SSTables on the disk.

```
INFO 2017-10-17 16:25:27.324 Shutting down in 7 seconds [e]
```


```
C:\> cd "Program Files\apache-cassandra-3.11.2\bin"
C:\> nodetool drain
```

For more information about this command, click here: <http://cassandra.apache.org/doc/latest/tools/nodetool/drain.html>.

4. Stop Cassandra.
5. Back up the Cassandra database on your machine. You can back up the database by copying the stored database folder. You are required to back up the following default folders for each OS.

Windows: C:\Program Files\DataStax Community\data

Linux: /var/lib/cassandra/data (if you used the scripted installer, the data is located under /data)

**Note**
The location of your data is configured in `cassandra.yaml`, as specified by the `data_file_directories` parameter. Make sure that you back up the correct folder. Alternatively, you can use the backup and restore script, explained in [Backup and restore data procedures](#). In this case, you


6. If your data is created in an earlier version than TWCloud 18.5, run the TWCloud 18.5 migrator. Otherwise, proceed to the next step.
7. To upgrade your Cassandra version to 3.11-x, uninstall the old version and install Cassandra 3.11-x in this step.
8. Start Cassandra and confirm that it is up and running.
9. Run the command, `nodetool upgradesstables`. This process may take a while.

For more information about this command, click here: <http://cassandra.apache.org/doc/latest/tools/nodetool/upgradesstables.html>

10. [Download the migration tool zip](#) and extract the .zip file.
11. Run the migration tool for your operating system (*migrator* for Linux or *migrator.exe* for Windows).
12. Wait for the migration process to complete and the successful data migration message to appear.

13. Upgrade your UML meta-model using the following instructions.

Migrating a UML meta-model in the database

 This section is only applicable if you are upgrading from a version lower than 19.0

As of version 19.0, TWCloud uses the UML meta-model version 2.5.1. Therefore, you need to migrate the UML meta model in the database since earlier versions of TWCloud are using the UML meta-model version 2.5. This UML meta-model migration is necessary to continue working with old TWCloud projects in 19.0 SP1. If you do not migrate the UML meta-model prior to using TWCloud 19.0 SP1, the project will not load. You can [download the migration tool](#) to migrate the UML meta-model to version 2.5.1.

Warning

- The migration tool modifies the Cassandra database and may leave it in an incomplete migration state in the event of failure. To prevent data

loss, create a backup your database before performing the UML migration. To find out more about backing up your data, see [Backup and restore data procedures](#). You must complete the following prerequisites before migrating the UML meta-model in your database to version 2.5.1.

1. [Back up your Cassandra database](#).
2. ~~If the Cassandra database has not been migrated~~ If the Cassandra database has not been migrated to TWCloud 19.0 SP1 before running the migration tool, you will receive an error similar to the following "Cannot migrate. Database version is 18.5, expected 19.0 SP1. Please migrate to specified database version first."

To migrate database to UML v2.5.1 follow these steps

1. Stop TWCloud server if it is running.
2. Make sure that Cassandra is up and running.
3. Run the UML migrator application (for Linux or for Windows).
4. Open the Command Prompt (if using Windows) or Terminal window (if using Linux).
5. Go to the migration tool directory.
6. Launch the migrator UML application in the terminal with the following parameters
 - **Windows:** `Migrator -host 127.0.0.1 -port 9160`
 - **Linux:** `./Migrator -host 127.0.0.1 -port 9160`
7. Wait for the migration to complete. Upon successful migration, the following message appears: "Finished UML 2.5 -> 2.5.1 migration."

The parameters are:

- **host** is the Cassandra host name or ip address
- **port** is the Cassandra port (i.e. 9160)
- **u** is the Cassandra username (optional) (i.e. cassandra)
- **pwd** is the Cassandra password (optional) (i.e. cassandra)
- **n** is the cluster name (optional) (i.e. "Test cluster")

Upgrading to TWCloud 19.0 SP1

You must [migrate your data](#) prior to upgrading to TWCloud 19.0 SP1. If you do not need your existing data, you can skip the migration and simply delete the Cassandra database folder from your machine.



Location of your data

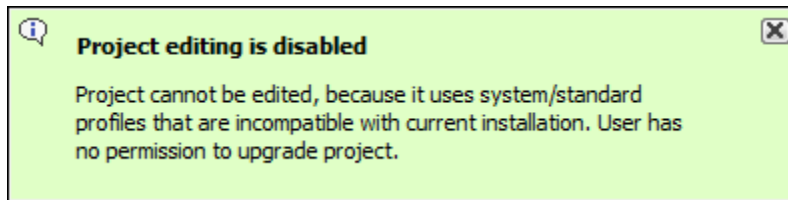
The location of your data is configured in `cassandra.yaml`, as specified by the `data_file_directories` parameter

To upgrade to TWCloud 19.0 SP1

1. Stop the Teamwork Cloud Services
2. (Optional) Make a copy of the installation directory - this will leave a reference to the existing configuration, as well as a source for your signed certificates, if you are not using the self-signed certificates generated during the install.
3. [Uninstall](#) CEDW 18.3, TWCloud 18.4, 18.5 or 19.0 from your machine. Do not uninstall Cassandra.
4. Install TWCloud 19.0 SP1 [on Linux](#) or [on Windows](#).
5. Start TWCloud.

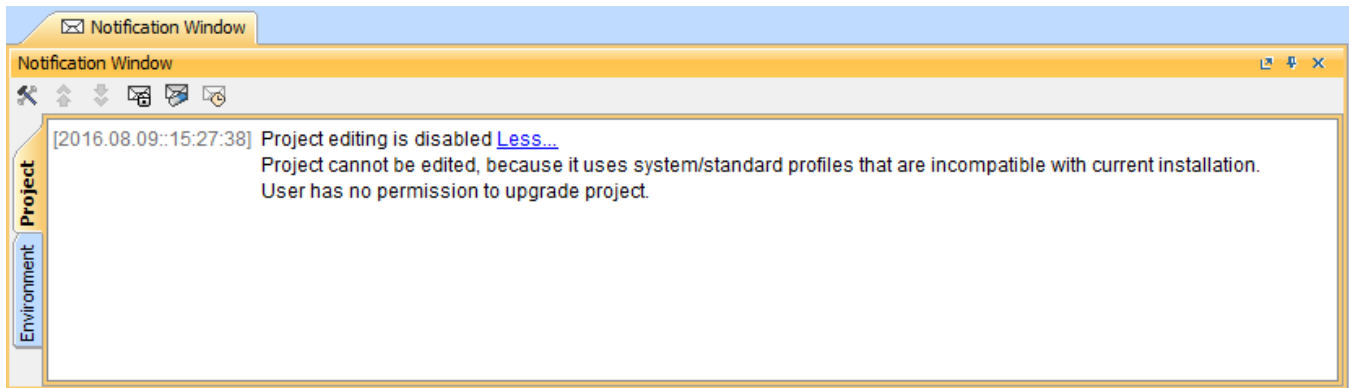
Updating projects

Once you have successfully migrated your data to TWCloud 19.0 SP1, you must update the projects in the database to the latest version. A project that is not updated will open in read-only mode. When you open the project in a modeling tool, the following notification appears. Project editing is disabled, because it uses system or standard profiles that are incompatible with the current installation.



You will not be able to edit a project until you update the project to the latest version.

You can see the same notification in the Notification Window. Therefore, you must update the project before you can edit it.

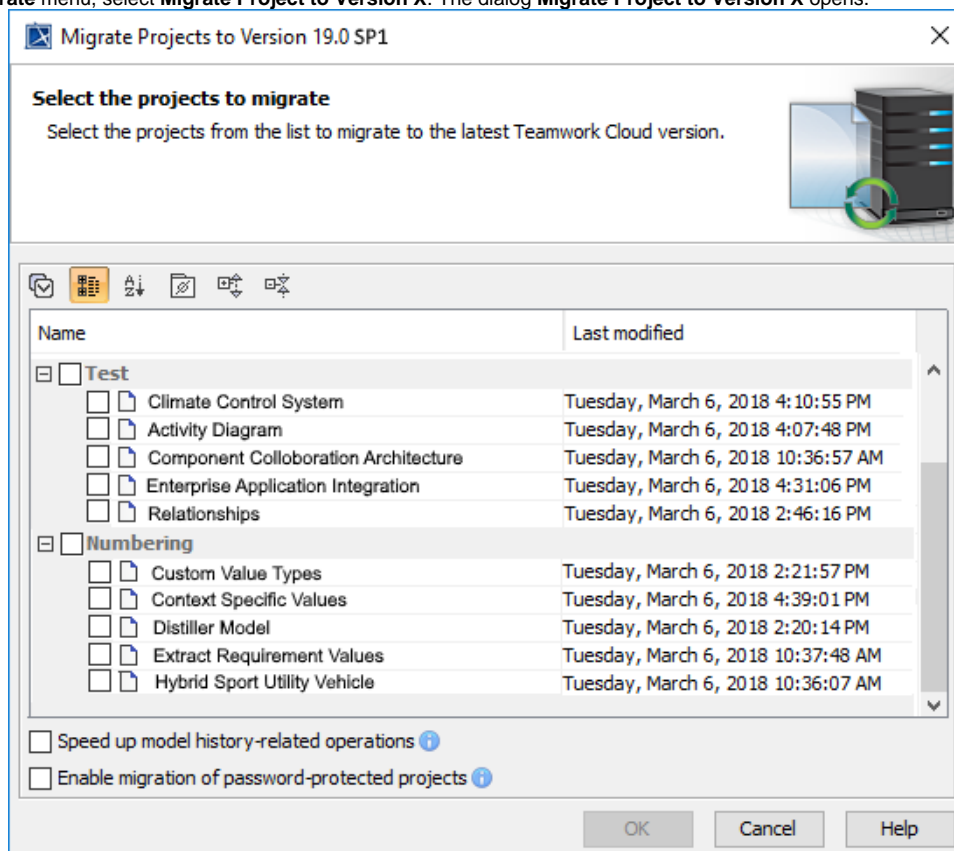


Editing a project that has not been upgraded to the latest version is not allowed.


You need an **Administer Resource** permission to upgrade a project by migrating it. While the project is being migrated, other users are prevented from any modifications in that project. We highly recommend that the same person migrates all projects.

To migrate server projects automatically

1. Start the modeling tool and [log in to the TWCloud server](#).
2. From the **Collaborate** menu, select **Migrate Project to Version X**. The dialog **Migrate Project to Version X** opens.



3. Select projects to migrate. Do one of the following:

- On the dialog toolbar, click  to select all server projects.
- Select category (or categories) to migrate with all projects inside it.
- Select separate projects from category (or categories).

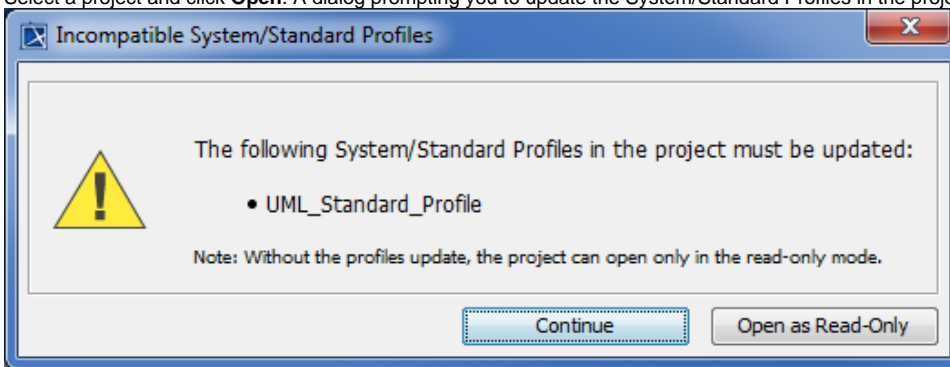


- Select **Speed up model history-related operations** if you want to upgrade caches of earlier model revisions on the server. This is useful if your modeling workflow includes using historical model versions; however, this option may slow down the migration process.

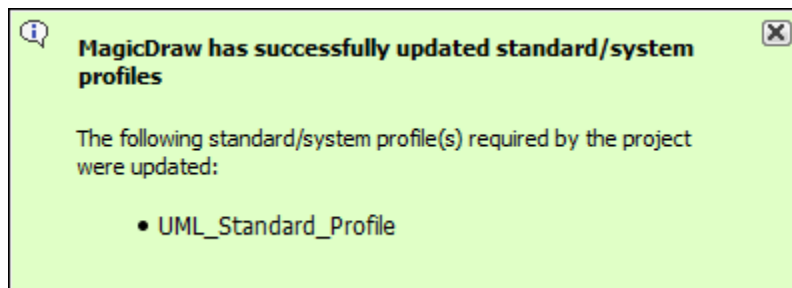
After the project migration is completed, you will either get a message about successful project migration or a list of projects that were not migrated. You must migrate those projects manually.

- Select **Enable migration of password-protected projects** to enable selection of password protected projects. During the migration process, you will be prompted to enter a password for each of the password-protected projects you selected to migrate. If this option is not selected, To migrate server projects manually (for a user role with the **Administer Resources** permission) after the project migration is completed, you will get a message with a list of password-protected projects that were not migrated. You must

1. migrate those projects manually.
2. Start the modeling tool and [log in to the TWCloud server](#).
3. On the main menu, click **Collaborate > Projects**. The [Manage projects](#) dialog opens.
4. Select a project and click **Open**. A dialog prompting you to update the System/Standard Profiles in the project to allow project editing opens.



4. Click **Continue**. After the System/Standard Profiles are updated, the modeling tool opens a notification showing that the model was successfully updated.

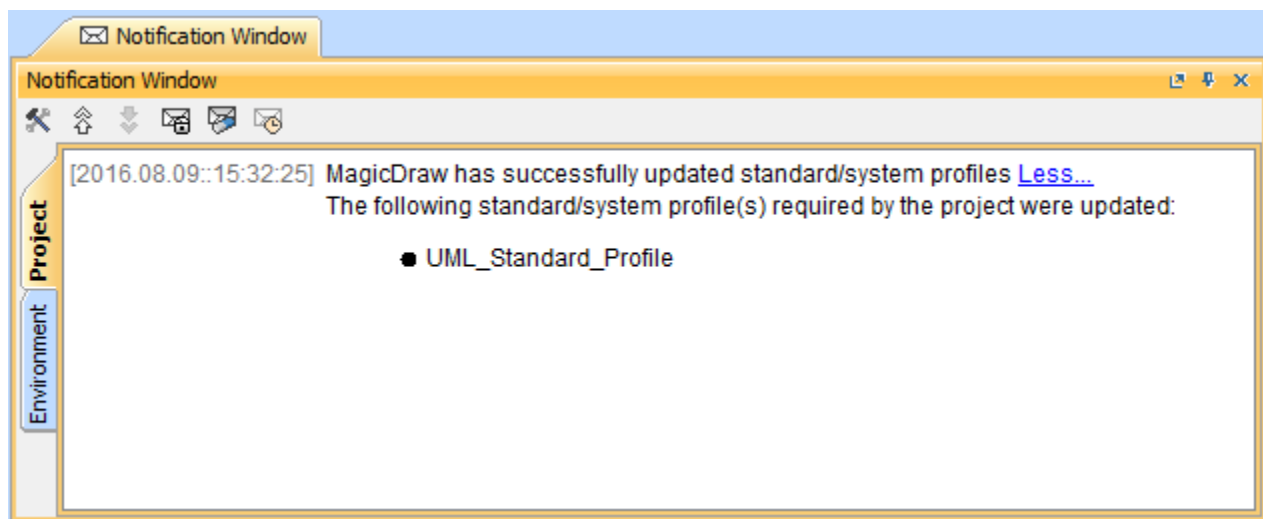


- You can also see the same notification in the **Notification Window**.



Note

You can open the **Notification Window** by pressing **Ctrl + M** or click **Window > Notification Window**.



Related pages



Unknown macro: 'list-children'