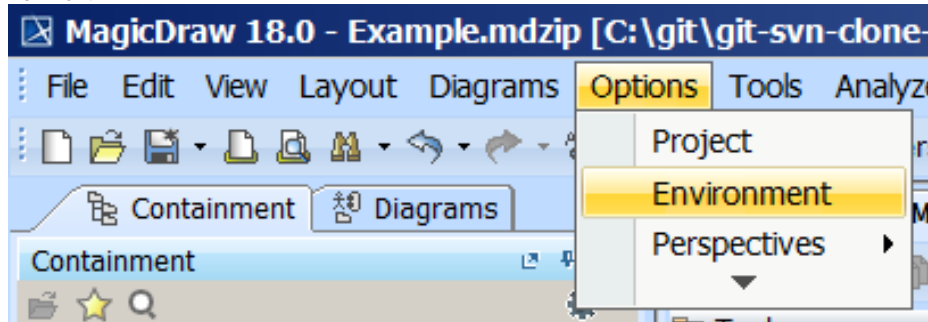


# Creating a path variable to share OWL import catalog files

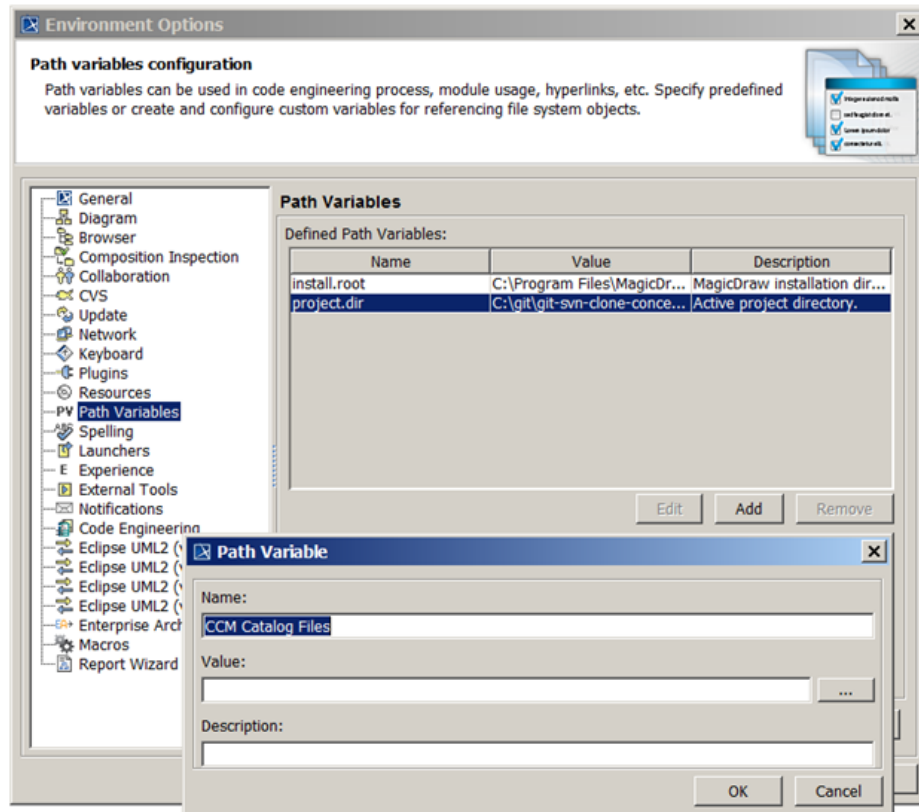
You are able to set your path variable to a local directory containing your OWL catalog files. In doing so, the modeling tool allows you to share OWL import catalogs and projects that use the same path variable. Without this path variable, you and your collaborative team may have different path variables to the OWL import catalog or project. This difference may cause you and your team to change the path variable back and forth. To resolve this issue, you need to define a path variable to your local directory that corresponds to the directory containing the same OWL import catalog on your team's local directory.

To create a path variable

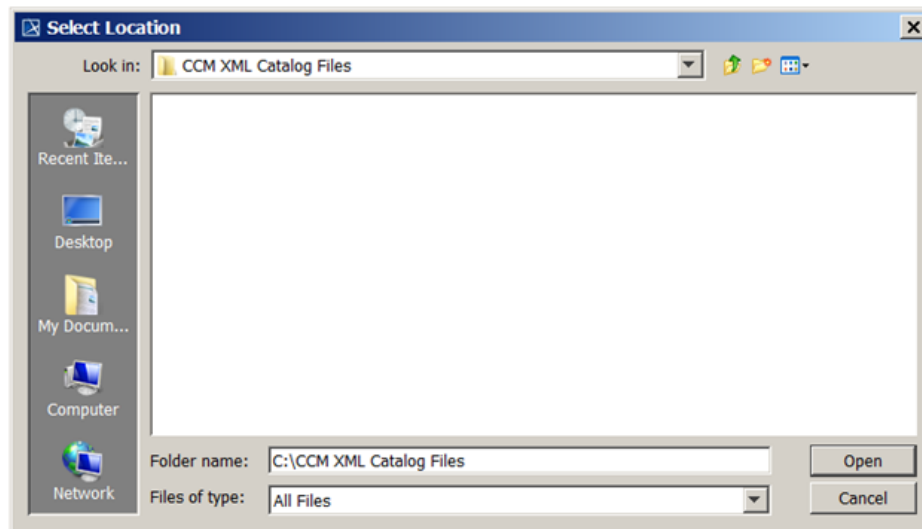
1. Click **Options > Environment**.



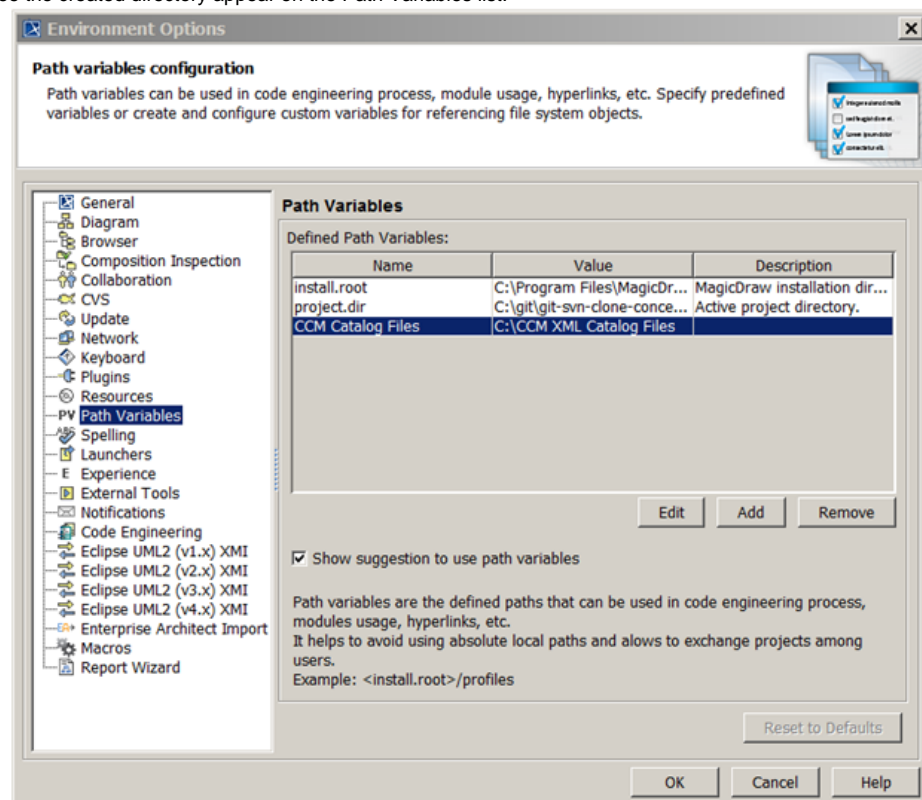
2. Select **Path Variables**.
3. Click **Add**.



4. Name the path in the **Name** field.
5. Click the "... " button next to the **Value** text box.
6. Select desired root directory containing the OWL import catalog files.



7. Click **Open**.
8. Click **OK**. You will see the created directory appear on the Path Variables list.



9. Click **OK**.

#### Related pages

- [Usage](#)
- [Importing an OWL ontology to a concept model](#)
- [Setting the OWL import catalog in MagicDraw](#)
- [Using a path variable to share OWL import catalog files](#)